



Eggs

EGG SHELL LARGE GR AA USDA WHT

SUPC: 2105823

Nutrition Information	
Serving size	1 egg (50 grams)
Amount Per Serving	
Calories	70
% Daily Value*	
Total Fat 5g	6%
Saturated Fat 1.5g	8%
Trans Fat 0g	
Cholesterol 185mg	62%
Sodium 70mg	3%
Total Carbohydrate 0g	0%
Dietary Fiber 0g	0%
Total Sugars 0g	
Includes 0g Added Sugars	0%
Protein 6g	
Vitamin D 1.0mcg	6%
Calcium 28mg	2%
Iron 1.00mg	6%
Potassium 70mg	1%
* The % Daily Value (DV) tells you how much a nutrient in a serving of food contributes to a daily diet. 2000 calories a day is used for general nutrition advice.	

Ingredients:

Fresh Shell Eggs.

Contains:

Eggs

Notes

The nutrition information, ingredients/allergens and attributes/diet types displayed as well as any corresponding claims related thereto, including without limitation, claims regarding the vegetarian, vegan, Kosher, and gluten-free status of a product or item in Sysco eNutrition® (collectively, "Product Information & Attributes/Diet Types/Claims") are provided by product manufacturers and suppliers. Such information may not be complete and/or up to date. You should defer to the product packaging and/or consult with the product manufacturer for complete and current product information. Determination of whether or not a product or item meets the parameters of a specific lifestyle/diet is at your discretion and risk. Sysco and its affiliates do not guarantee the validity, accuracy or completeness of any Product Information & Attributes/Diet Types/Claim and you hereby release Sysco and its affiliates for all claims in any way related to the Product Information & Attributes/Diet Types/Claims. Note that if an item is linked to nutrition information from the USDA National Nutrient Database for Standard Reference, ingredients and allergens will not be displayed.



EGG ROLLS

EGGROLL VEGETABLE

SUPC: 1757269

Nutrition Information	
Serving size	1 Serving (85 grams)
Amount Per Serving	
Calories	140
	% Daily Value*
Total Fat 4.5g	6%
Saturated Fat 0.5g	3%
Trans Fat 0g	
Cholesterol 0mg	0%
Sodium 450mg	20%
Total Carbohydrate 21g	8%
Dietary Fiber 2g	7%
Total Sugars 2g	
Includes 1g Added Sugars	2%
Protein 3g	
Vitamin D 0mcg	0%
Calcium 30mg	2%
Iron 1.10mg	6%
Potassium 180mg	4%
* The % Daily Value (DV) tells you how much a nutrient in a serving of food contributes to a daily diet. 2000 calories a day is used for general nutrition advice.	

Ingredients:

INGREDIENTS: CABBAGE, ENRICHED FLOUR ((BLEACHED WHEAT FLOUR, NIACIN, REDUCED IRON, THIAMINE MONONITRATE, RIBOFLAVIN, FOLIC ACID), MALTED BARLEY FLOUR), CELERY, WATER, CARROTS, BOK CHOY, WATER CHESTNUTS, ENRICHED DURUM FLOUR (WHEAT FLOUR, NIACIN, FERROUS SULFATE, THIAMINE MONONITRATE, RIBOFLAVIN, FOLIC ACID), BAMBOO SHOOTS, CONTAINS 2% OR LESS OF: SALT, VEGETABLE OIL (COTTONSEED, CANOLA, AND/OR SOYBEAN OIL), SUGAR, MODIFIED FOOD STARCH, SPICE, ROASTED GARLIC, WHEAT GLUTEN, TOASTED SESAME OIL, DRIED ONION, MALTODEXTRIN, NATURAL FLAVOR, DISODIUM INOSINATE, DISODIUM GUANYLATE, DRIED WHOLE EGGS, CORNSTARCH. FRIED IN VEGETABLE OIL (COTTONSEED, CANOLA AND/OR SOYBEAN OIL).

Contains:

Eggs, Sesame seeds, Wheat

Free From:

Crustaceans, Fish, Milk, Peanuts, Soy, Tree Nuts

Notes

The nutrition information, ingredients/allergens and attributes/diet types displayed as well as any corresponding claims related thereto, including without limitation, claims regarding the vegetarian, vegan, Kosher, and gluten-free



Feta Cheese

CHEESE FETA CRUMBLES

SUPC: 0135632

Nutrition Information	
Serving size	1/4 Cup (28 grams)
Amount Per Serving	
Calories	80
	% Daily Value*
Total Fat 6g	8%
Saturated Fat 4g	20%
Trans Fat 0g	
Cholesterol 25mg	8%
Sodium 300mg	13%
Total Carbohydrate 2g	1%
Dietary Fiber 1g	4%
Total Sugars 1g	
Includes 0g Added Sugars	0%
Protein 4g	
Vitamin D 0mcg	0%
Calcium 130mg	10%
Iron 0mg	0%
Potassium 0mg	0%
* The % Daily Value (DV) tells you how much a nutrient in a serving of food contributes to a daily diet. 2000 calories a day is used for general nutrition advice.	

Ingredients:

Feta Cheese (Cultured Pasteurized Milk, Salt, Enzymes), Powdered Cellulose (to Prevent Caking), Natamycin (a Natural Mold Inhibitor). CONTAINS: MILK.

Contains:

Milk

Notes

The nutrition information, ingredients/allergens and attributes/diet types displayed as well as any corresponding claims related thereto, including without limitation, claims regarding the vegetarian, vegan, Kosher, and gluten-free status of a product or item in Sysco eNutrition® (collectively, "Product Information & Attributes/Diet Types/Claims") are provided by product manufacturers and suppliers. Such information may not be complete and/or up to date. You should defer to the product packaging and/or consult with the product manufacturer for complete and current product information. Determination of whether or not a product or item meets the parameters of a specific lifestyle/diet is at your discretion and risk. Sysco and its affiliates do not guarantee the validity, accuracy or completeness of any Product Information & Attributes/Diet Types/Claim and you hereby release Sysco and its affiliates for all claims in any way related to the Product Information & Attributes/Diet Types/Claims. Note that if an item is linked to nutrition information from the USDA National Nutrient Database for Standard Reference, ingredients and allergens will not be displayed.



Flour

FLOUR ALL PURP H&R BL EN MLT

SUPC: 8379270

Nutrition Information	
Serving size	1/4 Cup (30 grams)
Amount Per Serving	
Calories	110
% Daily Value*	
Total Fat 0.5g	1%
Saturated Fat 0g	0%
Trans Fat 0g	
Cholesterol 0mg	0%
Sodium 0mg	0%
Total Carbohydrate 22g	8%
Dietary Fiber less than 1g	4%
Total Sugars 0g	
Includes 0g Added Sugars	0%
Protein 3g	
Vitamin D 0mcg	0%
Calcium 0mg	0%
Iron 1.30mg	8%
Potassium 30mg	1%

* The % Daily Value (DV) tells you how much a nutrient in a serving of food contributes to a daily diet. 2000 calories a day is used for general nutrition advice.

Ingredients:

Bleached Wheat Flour, Malted Barley Flour, Niacin, Iron, Thiamin Mononitrate, Riboflavin, Folic Acid. CONTAINS: WHEAT

Contains:

Wheat

Notes

The nutrition information, ingredients/allergens and attributes/diet types displayed as well as any corresponding claims related thereto, including without limitation, claims regarding the vegetarian, vegan, Kosher, and gluten-free status of a product or item in Sysco eNutrition® (collectively, "Product Information & Attributes/Diet Types/Claims") are provided by product manufacturers and suppliers. Such information may not be complete and/or up to date. You should defer to the product packaging and/or consult with the product manufacturer for complete and current product information. Determination of whether or not a product or item meets the parameters of a specific lifestyle/diet is at your discretion and risk. Sysco and its affiliates do not guarantee the validity, accuracy or completeness of any Product Information & Attributes/Diet Types/Claim and you hereby release Sysco and its affiliates for all claims in any way related to the Product Information & Attributes/Diet Types/Claims. Note that if an item is linked to nutrition information from the USDA National Nutrient Database for Standard Reference, ingredients and allergens will not be displayed.



DRESSING FRENCH CALIF

French Dressing

SUPC: 4981676

Nutrition Information	
Serving size	1 Serving (32 grams)
Amount Per Serving	
Calories	140
	% Daily Value*
Total Fat 12g	15%
Saturated Fat 2g	10%
Trans Fat 0g	
Cholesterol 0mg	0%
Sodium 230mg	10%
Total Carbohydrate 11g	4%
Dietary Fiber 0g	0%
Total Sugars 8g	
Includes 8g Added Sugars	16%
Protein 0g	
Vitamin D 0.0mcg	0%
Calcium 0mg	0%
Iron 0.00mg	0%
Potassium 0mg	0%
* The % Daily Value (DV) tells you how much a nutrient in a serving of food contributes to a daily diet. 2000 calories a day is used for general nutrition advice.	

Ingredients:

SOYBEAN OIL, HIGH FRUCTOSE CORN SYRUP, DISTILLED VINEGAR, MALTODEXTRIN, APPLE CIDER VINEGAR, TOMATO PASTE, WATER, CONTAINS LESS THAN 2% OF SALT, LEMON JUICE CONCENTRATE, ONION,* BEETROOT JUICE CONCENTRATE (COLOR), XANTHAN GUM, OLEORESIN PAPRIKA (COLOR), MUSTARD FLOUR, NATURAL FLAVOR, CALCIUM DISODIUM EDTA (TO PROTECT FLAVOR). *DRIED.

Free From:

Peanuts

Notes

The nutrition information, ingredients/allergens and attributes/diet types displayed as well as any corresponding claims related thereto, including without limitation, claims regarding the vegetarian, vegan, Kosher, and gluten-free status of a product or item in Sysco eNutrition® (collectively, "Product Information & Attributes/Diet Types/Claims") are provided by product manufacturers and suppliers. Such information may not be complete and/or up to date. You should defer to the product packaging and/or consult with the product manufacturer for complete and current product information. Determination of whether or not a product or item meets the parameters of a specific lifestyle/diet is at your discretion and risk. Sysco and its affiliates do not guarantee the validity, accuracy or completeness of any Product Information & Attributes/Diet Types/Claim and you hereby release Sysco and its affiliates for all claims in any way related to the Product Information & Attributes/Diet Types/Claims. Note that if an item is linked to nutrition information from the USDA National Nutrient Database for Standard Reference, ingredients and allergens will not be displayed.



French Toast Sticks

TOAST FRENCH STK WHL WHEAT 4PC

SUPC: 2697682

Nutrition Information	
Serving size	1 Serving (91 grams)
Amount Per Serving	
Calories	260
	% Daily Value*
Total Fat 10g	13%
Saturated Fat 1.5g	8%
Trans Fat 0g	
Cholesterol 0mg	0%
Sodium 300mg	13%
Total Carbohydrate 38g	14%
Dietary Fiber 3g	11%
Total Sugars 9g	
Includes 8g Added Sugars	16%
Protein 6g	
Vitamin D 0mcg	0%
Calcium 40mg	4%
Iron 2.00mg	10%
Potassium 150mg	3%
* The % Daily Value (DV) tells you how much a nutrient in a serving of food contributes to a daily diet. 2000 calories a day is used for general nutrition advice.	

Ingredients:

BREAD (WHOLE WHEAT FLOUR, WATER, ENRICHED WHEAT FLOUR [WHEAT FLOUR, MALTED BARLEY FLOUR, NIACIN, REDUCED IRON, THIAMINE MONONITRATE, RIBOFLAVIN, FOLIC ACID], WHEAT GLUTEN, SUGAR, YEAST, SALT, SOYBEAN OIL, CULTURED WHEAT FLOUR, VINEGAR, SOY LECITHIN, ASCORBIC ACID, ENZYME), WATER, WHOLE WHEAT FLOUR, SOYBEAN OIL, SUGAR, ENRICHED YELLOW CORN FLOUR (YELLOW CORN FLOUR, NIACIN, IRON AS FERROUS SULFATE, THIAMINE MONONITRATE, RIBOFLAVIN, FOLIC ACID), ENRICHED WHEAT FLOUR (WHEAT FLOUR, NIACIN, REDUCED IRON, THIAMINE MONONITRATE, RIBOFLAVIN, FOLIC ACID), CONTAINS 2% OR LESS OF EACH OF THE FOLLOWING: CARRAGEENAN, DEXTROSE, DRIED YEAST, GUM ARABIC, LEAVENING (BAKING SODA, MONOCALCIUM PHOSPHATE), NATURAL AND ARTIFICIAL FLAVOR, SALT, SOY FLOUR, SOY LECITHIN.

Contains:

Soy, Wheat

Notes

The nutrition information, ingredients/allergens and attributes/diet types displayed as well as any corresponding claims related thereto, including without limitation, claims regarding the vegetarian, vegan, Kosher, and gluten-free



Fried Rice - Vegetable

RICE FRIED VEGETABLE

SUPC: 2483311

Nutrition Information	
Serving size	1 Serving (140 grams)
Amount Per Serving	
Calories	150
% Daily Value*	
Total Fat 2g	3%
Saturated Fat 0g	0%
Trans Fat 0g	
Cholesterol 0mg	0%
Sodium 430mg	19%
Total Carbohydrate 32g	12%
Dietary Fiber 0g	0%
Total Sugars 4g	
Includes 2g Added Sugars	4%
Protein 3g	
Vitamin D 0mcg	0%
Calcium 30mg	2%
Iron 1.20mg	6%
Potassium 40mg	1%
* The % Daily Value (DV) tells you how much a nutrient in a serving of food contributes to a daily diet. 2000 calories a day is used for general nutrition advice.	

Ingredients:

INGREDIENTS: COOKED WHITE RICE, ONIONS, CARROTS, SOY SAUCE (WATER, SOYBEANS, RICE, SALT), CORN, RED BELL PEPPERS, PEAS, SUGAR, GREEN ONIONS, SOYBEAN OIL, TOASTED SESAME OIL.

Contains:

Sesame seeds, Soy

Free From:

Crustaceans, Eggs, Fish, Milk, Peanuts, Tree Nuts, Wheat

Notes

The nutrition information, ingredients/allergens and attributes/diet types displayed as well as any corresponding claims related thereto, including without limitation, claims regarding the vegetarian, vegan, Kosher, and gluten-free status of a product or item in Sysco eNutrition® (collectively, "Product Information & Attributes/Diet Types/Claims") are provided by product manufacturers and suppliers. Such information may not be complete and/or up to date. You should defer to the product packaging and/or consult with the product manufacturer for complete and current product information. Determination of whether or not a product or item meets the parameters of a specific lifestyle/diet is at your discretion and risk. Sysco and its affiliates do not guarantee the validity, accuracy or completeness of any Product Information & Attributes/Diet Types/Claim and you hereby release Sysco and its affiliates for all claims in any way related to the Product Information & Attributes/Diet Types/Claims. Note that if an item is linked to nutrition information from the USDA National Nutrient Database for Standard Reference, ingredients and allergens will not be displayed.



Fruit Loop Cereal

CEREAL FROOT LOOP BWLPK

SUPC: 4044608

Nutrition Information	
Serving size	1 Container (21 grams)
Amount Per Serving	
Calories	80
% Daily Value*	
Total Fat 1g	1%
Saturated Fat 0g	0%
Trans Fat 0g	
Cholesterol 0mg	0%
Sodium 110mg	5%
Total Carbohydrate 18g	7%
Dietary Fiber 1g	4%
Total Sugars 7g	
Includes 6g Added Sugars	12%
Protein 1g	
Vitamin D 1.0mcg	6%
Calcium 0mg	0%
Iron 2.40mg	15%
Potassium 30mg	1%
<small>* The % Daily Value (DV) tells you how much a nutrient in a serving of food contributes to a daily diet. 2000 calories a day is used for general nutrition advice.</small>	

Ingredients:

INGREDIENTS: CORN FLOUR BLEND (whole grain yellow corn flour, degerminated yellow corn flour), SUGAR, WHEAT FLOUR, WHOLE GRAIN OAT FLOUR, MODIFIED FOOD STARCH, CONTAINS 2% OR LESS OF vegetable oil (hydrogenated coconut, soybean and/or cottonseed), oat fiber, maltodextrin, salt, soluble corn fiber, natural flavor, red 40, yellow 5, blue 1, yellow 6. VITAMINS AND MINERALS: Vitamin C (ascorbic acid), reduced iron, niacinamide, vitamin B6 (pyridoxine hydrochloride), vitamin B2 (riboflavin), vitamin B1 (thiamin hydrochloride), folic acid, vitamin D3, vitamin B12.

Contains:

Wheat

Notes

The nutrition information, ingredients/allergens and attributes/diet types displayed as well as any corresponding claims related thereto, including without limitation, claims regarding the vegetarian, vegan, Kosher, and gluten-free status of a product or item in Sysco eNutrition® (collectively, "Product Information & Attributes/Diet Types/Claims") are provided by product manufacturers and suppliers. Such information may not be complete and/or up to date. You should defer to the product packaging and/or consult with the product manufacturer for complete and current product information. Determination of whether or not a product or item meets the parameters of a specific lifestyle/diet is at your discretion and risk. Sysco and its affiliates do not guarantee the validity, accuracy or completeness of any Product Information & Attributes/Diet Types/Claim and you hereby release Sysco and its affiliates for all claims in any way related to the Product Information & Attributes/Diet Types/Claims. Note that if an item is linked to nutrition



Frosted Flake Cereal

CEREAL FROSTED FLAKE BWLPK

SUPC: 4044707

Nutrition Information	
Serving size	1 Container (28 grams)
Amount Per Serving	
Calories	100
% Daily Value*	
Total Fat 0g	0%
Saturated Fat 0g	0%
Trans Fat 0g	
Cholesterol 0mg	0%
Sodium 140mg	6%
Total Carbohydrate 25g	9%
Dietary Fiber less than 1g	4%
Total Sugars 9g	
Includes 9g Added Sugars	18%
Protein 1g	
Vitamin D 1.5mcg	8%
Calcium 0mg	0%
Iron 5.40mg	30%
Potassium 20mg	0%
* The % Daily Value (DV) tells you how much a nutrient in a serving of food contributes to a daily diet. 2000 calories a day is used for general nutrition advice.	

Ingredients:

INGREDIENTS: MILLED CORN, SUGAR, MALT FLAVOR, CONTAINS 2% OR LESS OF salt. VITAMINS AND MINERALS: Iron (ferric phosphate), niacinamide, vitamin B6 (pyridoxine hydrochloride), vitamin B2 (riboflavin), vitamin B1 (thiamin hydrochloride), folic acid, vitamin D3, vitamin B12.

Notes

The nutrition information, ingredients/allergens and attributes/diet types displayed as well as any corresponding claims related thereto, including without limitation, claims regarding the vegetarian, vegan, Kosher, and gluten-free status of a product or item in Sysco eNutrition® (collectively, "Product Information & Attributes/Diet Types/Claims") are provided by product manufacturers and suppliers. Such information may not be complete and/or up to date. You should defer to the product packaging and/or consult with the product manufacturer for complete and current product information. Determination of whether or not a product or item meets the parameters of a specific lifestyle/diet is at your discretion and risk. Sysco and its affiliates do not guarantee the validity, accuracy or completeness of any Product Information & Attributes/Diet Types/Claim and you hereby release Sysco and its affiliates for all claims in any way related to the Product Information & Attributes/Diet Types/Claims. Note that if an item is linked to nutrition information from the USDA National Nutrient Database for Standard Reference, ingredients and allergens will not be displayed.



Frasted mini wheat Cereal

CEREAL FRSTD MINI WHEAT BWLPK

SUPC: 5769856

Nutrition Information	
Serving size	1 Container (28 grams)
Amount Per Serving	
Calories	100
	% Daily Value*
Total Fat 0.5g	1%
Saturated Fat 0g	0%
Trans Fat 0g	
Cholesterol 0mg	0%
Sodium 0mg	0%
Total Carbohydrate 24g	9%
Dietary Fiber 3g	11%
Total Sugars 6g	
Includes 6g Added Sugars	12%
Protein 2g	
Vitamin D 0mcg	0%
Calcium 0mg	0%
Iron 8.40mg	45%
Potassium 70mg	1%
<small>* The % Daily Value (DV) tells you how much a nutrient in a serving of food contributes to a daily diet. 2000 calories a day is used for general nutrition advice.</small>	

Ingredients:

INGREDIENTS: WHOLE GRAIN WHEAT, SUGAR, CONTAINS 2% OR LESS OF brown rice syrup, gelatin. VITAMINS AND MINERALS: Reduced iron, folic acid.

Contains:

Wheat

Notes

The nutrition information, ingredients/allergens and attributes/diet types displayed as well as any corresponding claims related thereto, including without limitation, claims regarding the vegetarian, vegan, Kosher, and gluten-free status of a product or item in Sysco eNutrition® (collectively, "Product Information & Attributes/Diet Types/Claims") are provided by product manufacturers and suppliers. Such information may not be complete and/or up to date. You should defer to the product packaging and/or consult with the product manufacturer for complete and current product information. Determination of whether or not a product or item meets the parameters of a specific lifestyle/diet is at your discretion and risk. Sysco and its affiliates do not guarantee the validity, accuracy or completeness of any Product Information & Attributes/Diet Types/Claim and you hereby release Sysco and its affiliates for all claims in any way related to the Product Information & Attributes/Diet Types/Claims. Note that if an item is linked to nutrition information from the USDA National Nutrient Database for Standard Reference, ingredients and allergens will not be displayed.

School Equivalents

Portion Size: 1 container(28g)
 Child Nutrition Label:
 Product Formulation Statement:

ID#:

No
 Yes



Fruit Punch

SEA BREEZE
441 Main Road
Towaco, NJ 07082
Phone: (973)334-7777
Fax: (973)334-2617
www.seabreezesyrups.com

Fruit Punch 1+5 Beverage Concentrate

When reconstituted, 2 fl. oz. concentrate yields an 12 fl. oz. beverage

3 Gallon BIB:

Nutrition Facts	
192 servings per container	
Serving size 12 fl. oz. (355 mL)	
Amount per serving	
Calories	170
	% Daily Value*
Total Fat 0g	0%
Saturated Fat 0g	0%
Trans Fat 0g	
Cholesterol 0mg	0%
Sodium 10mg	0%
Total Carbohydrate 43g	16%
Dietary Fiber 0g	0%
Total Sugars 40g	
Includes 40g Added Sugars	80%
Protein 0g	
Vitamin D 0mcg	0%
Calcium 0mg	0%
Iron 0mg	0%
Potassium 0mg	0%
<small>*The % Daily Value tells you how much a nutrient in a serving of food contributes to a daily diet. 2,000 calories a day is used for general nutrition advice.</small>	

INGREDIENTS: High Fructose Corn Syrup, Water, Citric Acid, Natural and Artificial Flavors, Sodium Benzoate (Preservative), FD&C Red #40, Gum Acacia, Ester Gum.



Fruit Punch Caps

JUICE FRUIT PUNCH 100%

SUPC: 2243228

Nutrition Information	
Serving size	1 Serving (4 fl oz)
Amount Per Serving	
Calories	60
% Daily Value*	
Total Fat 0g	0%
Saturated Fat 0g	0%
Trans Fat 0g	
Cholesterol 0mg	0%
Sodium 10mg	0%
Total Carbohydrate 14g	5%
Dietary Fiber 0g	0%
Total Sugars 13g	
Includes NA Added Sugars	NA
Protein 0g	
Vitamin D 0.0mcg	0%
Calcium 0mg	0%
Iron 0.00mg	0%
Potassium 100mg	2%

* The % Daily Value (DV) tells you how much a nutrient in a serving of food contributes to a daily diet. 2000 calories a day is used for general nutrition advice.

Ingredients:

Filtered water, Apple, pear, Orange, Apple, Grape and Pineapple juice from concentrate, natural flavors

Free From:

Crustaceans, Eggs, Fish, Milk, Peanuts, Sesame seeds, Soy, Tree Nuts, Wheat

Notes

The nutrition information, ingredients/allergens and attributes/diet types displayed as well as any corresponding claims related thereto, including without limitation, claims regarding the vegetarian, vegan, Kosher, and gluten-free status of a product or item in Sysco eNutrition® (collectively, "Product Information & Attributes/Diet Types/Claims") are provided by product manufacturers and suppliers. Such information may not be complete and/or up to date. You should defer to the product packaging and/or consult with the product manufacturer for complete and current product information. Determination of whether or not a product or item meets the parameters of a specific lifestyle/diet is at your discretion and risk. Sysco and its affiliates do not guarantee the validity, accuracy or completeness of any Product Information & Attributes/Diet Types/Claim and you hereby release Sysco and its affiliates for all claims in any way related to the Product Information & Attributes/Diet Types/Claims. Note that if an item is linked to nutrition information from the USDA National Nutrient Database for Standard Reference, ingredients and allergens will not be displayed.

School Equivalents

Portion Size: 4 fl oz

ID#:

Child Nutrition Label:

Product Formulation Statement:

No
Yes



Fruit Salad

SALAD FRUIT CHPOG LT SYRUP

SUPC: 2527786

Nutrition Information	
Serving size	1/2 Cup (140 grams)
Amount Per Serving	
Calories	80
	% Daily Value*
Total Fat 0g	0%
Saturated Fat 0g	0%
Trans Fat 0g	
Cholesterol 0mg	0%
Sodium 15mg	1%
Total Carbohydrate 21g	8%
Dietary Fiber 1g	4%
Total Sugars 19g	
Includes 9g Added Sugars	18%
Protein 1g	
Vitamin D 0mcg	0%
Calcium 20mg	2%
Iron 0.20mg	2%
Potassium 200mg	4%
* The % Daily Value (DV) tells you how much a nutrient in a serving of food contributes to a daily diet. 2000 calories a day is used for general nutrition advice.	

Ingredients:

PINEAPPLE, WATER, ORANGE, HONEYDEW MELON, CANTALOUPE, SUGAR, GRAPES, CITRIC ACID, ASCORBIC ACID, POTASSIUM SORBATE (PRESERVATIVE), SODIUM BENZOATE (PRESERVATIVE), TURMERIC (COLOR)

Notes

The nutrition information, ingredients/allergens and attributes/diet types displayed as well as any corresponding claims related thereto, including without limitation, claims regarding the vegetarian, vegan, Kosher, and gluten-free status of a product or item in Sysco eNutrition® (collectively, "Product Information & Attributes/Diet Types/Claims") are provided by product manufacturers and suppliers. Such information may not be complete and/or up to date. You should defer to the product packaging and/or consult with the product manufacturer for complete and current product information. Determination of whether or not a product or item meets the parameters of a specific lifestyle/diet is at your discretion and risk. Sysco and its affiliates do not guarantee the validity, accuracy or completeness of any Product Information & Attributes/Diet Types/Claim and you hereby release Sysco and its affiliates for all claims in any way related to the Product Information & Attributes/Diet Types/Claims. Note that if an item is linked to nutrition information from the USDA National Nutrient Database for Standard Reference, ingredients and allergens will not be displayed.



Fudge Frenzy

Fudge Frenzy Bar

Chocolate Flavored Frozen Dairy Snack

Nutrition Facts

1 serving per container	
Serving size	1 bar (63g)
Amount per serving	
Calories	110
% Daily Value*	
Total Fat 0g	0%
Saturated Fat 0g	0%
TransFat 0g	
Cholesterol <5mg	0%
Sodium 65mg	3%
Total Carbohydrate 25g	9%
Dietary Fiber 1g	4%
Total Sugars 19g	
Includes 13g Added Sugars	26%
Protein 2g	
Vit. D 0mcg 0%	Calcium 79mg 6%
Iron 1mg 6%	Potas. 263mg 6%

The % Daily Value (DV) tells you how much a nutrient in a serving of food contributes to a daily diet. 2,000 calories a day is used for general nutrition advice.



Size: 2.5 FL. OZ (74mL)

UPC: 0-75455-86210-7

Allergens: MILK

Ingredients:

SKIM MILK, WHEY, CORN SYRUP, CANE SUGAR, COCOA, STABILIZER (MONO & DIGLYCERIDES, GUAR GUM, CAROB BEAN GUM, CARRAGEENAN), NATURAL COCOA EXTRACT.

Funnel Cakes -

Ingredients

Enriched Wheat Flour (wheat Flour, Niacin, Reduced Iron, Thiamine Mononitrate, Riboflavin, Folic Acid), Sugar, Soybean Oil, Water, Contains 2% Or Less Of The Following: Artificial Flavor, Cellulose Gum, Defatted Soy Flour, Egg Yolks, Sodium Bicarbonate, Monocalcium Phosphate, Sodium Acid Pyrophosphate, Mono- And Diglycerides, Nonfat Milk, Salt. Contains Egg, Milk, Soy, Wheat. Contains A Bioengineered Food Ingredient

Contains

Eggs, Milk, Soy, Wheat

Free from

Crustaceans, Fish, Peanuts, Sesame seeds, Tree Nuts

Organic claims

NA

Attributes

Kosher

Nutrition Information

270 Calories per serving

Serving size 1/3 funnel cake (64g) (64g)

Total Fat 12g	15%
Saturated Fat 2g	10%
Trans Fat	
Cholesterol 10mg	3%
Sodium 290mg	13%
Total Carbohydrate 36g	13%
Dietary Fiber 1g	4%
Total Sugars	
Includes 11g Added Sugars	22%
Protein 4g	8%
Vitamin D 0.0mcg	0%
Calcium 100mg	8%
Iron 1.90mg	10%
Potassium 70mg	1%

*The % Daily Value (DV) tells you how much a nutrient in a serving of food contributes to a daily diet. 2,000 calories a day is used for general nutrition advice.

10078092050507 - FUNNEL CAKE FROZEN - 5"

Add fun to your menu with Funnel Cakes and Fries. Serve up a unique breakfast or lunch offering and create your own signature dessert with our versatile funnel cakes and fries.



MARKETING

Delicious, pre-formed funnel cakes & fries that cuts down on prep time. Can be heated or fried. To make from scratch, choose our funnel cake mix. Top with powdered sugar, serve with chocolate or caramel sauce

Nutrition Facts

48 Servings per container
Serving Size 1 funnel cake (81g)

Amount Per Serving
Calories 320

	% Daily Value*
Total Fat 14 g	18%
Saturated Fat 2.5 g	13%
Trans Fat 0 g	
Cholesterol 10 mg	3%
Sodium 360 mg	16%
Total Carbohydrates 45 g	16%
Dietary Fiber 1 g	4%
Total Sugars 15 g	
Includes 13 g Added Sugars	26%

Protein 5 g	
Vitamin D 0 mcg	0%
Calcium 130 mg	10%
Iron 2.3 mg	15%
Potassium 80 mg	2%

* The % Daily Values (DV) tells you how much a nutrient in a serving of food contributes to a daily diet. 2,000 calories a day is used for general nutrition advice.

PRODUCT SPECIFICATIONS

Code	GTIN	Pack Description				
4906	10078092050507	case				
Brand	Brand Owner	GPC Description				
The Funnel Cake Factory®	J&J SNACK FOODS CORP.	Dough Based Products / Meals - Not Ready to Eat - Savoury (Frozen)				
Gross Weight	Net Weight	Case/Catch Weight	Country Of Origin	Kosher	Child Nutrition	
9.6839 LBR	8.5716 LBR	No	United States	Yes	No	
Shipping						
Length	Width	Height	Volume	TlxHl	Shelf Life	Storage Temp From/To
15.875 INH	11.125 INH	10.625 INH	1.0517 FTQ	10x7	365 Days	-10 FAH / 15 FAH
Traceability Regulation						
Regulation Type Code	Regulatory Act	Trade Item Regulation Compliant	Regulation Restrictions and Descriptors			
TRACEABILITY_REGULATION	FSMA204	NOT_APPLICABLE	NOT_COVERED_BY_FTL			

HANDLING SUGGESTIONS

Keep Frozen (0° F or below) Shelf life up to one year when stored properly.

ALLERGENS

C = 'Contains'; MC = 'May Contain'; N = 'Free From'; UN = 'Undeclared'; 30 = 'Free From Not Tested'; 50 = 'Derived from Ingredients'; 60 = 'Not Derived From Ingredients'; NI = 'No Info'

- Milk - C
- Eggs - C
- Soybean - C
- Wheat - C
- Sesame - N
- Peanuts - N
- Tree - N
- Fish - N
- Shellfish - N
- Crustaceans - N

INGREDIENTS

ENRICHED WHEAT FLOUR (WHEAT FLOUR, NIACIN, REDUCED IRON, THIAMINE MONONITRATE, RIBOFLAVIN, FOLIC ACID), SUGAR, SOYBEAN OIL (SOYBEAN OIL, BHT, CITRIC ACID), WATER, ARTIFICIAL FLAVOR, CELLULOSE GUM, DEFATTED SOY FLOUR, EGG YOLKS, SODIUM BICARBONATE, MONOCALCIUM PHOSPHATE, SODIUM ACID PYROPHOSPHATE, MONO- AND DIGLYCERIDES, NONFAT MILK, SALT. CONTAINS EGG, MILK, SOY, WHEAT. CONTAINS A BIOENGINEERED FOOD INGREDIENT



SPICE GARLIC GRANULATED

Garlic

SUPC: 5935606

Nutrition Information	
Serving size	1/4 Teaspoon (grams)
Amount Per Serving	
Calories	NA
% Daily Value*	
Total Fat NA	NA
Saturated Fat	NA
Trans Fat	NA
Cholesterol NA	NA
Sodium NA	NA
Total Carbohydrate NA	NA
Dietary Fiber	NA
Total Sugars	NA
Includes NA Added Sugars	NA
Protein NA	NA
Vitamin D	NA
Calcium	NA
Iron	NA
Potassium	NA
* The % Daily Value (DV) tells you how much a nutrient in a serving of food contributes to a daily diet. 2000 calories a day is used for general nutrition advice.	

Ingredients:
Garlic Powder

Notes

The nutrition information, ingredients/allergens and attributes/diet types displayed as well as any corresponding claims related thereto, including without limitation, claims regarding the vegetarian, vegan, Kosher, and gluten-free status of a product or item in Sysco eNutrition® (collectively, "Product Information & Attributes/Diet Types/Claims") are provided by product manufacturers and suppliers. Such information may not be complete and/or up to date. You should defer to the product packaging and/or consult with the product manufacturer for complete and current product information. Determination of whether or not a product or item meets the parameters of a specific lifestyle/diet is at your discretion and risk. Sysco and its affiliates do not guarantee the validity, accuracy or completeness of any Product Information & Attributes/Diet Types/Claim and you hereby release Sysco and its affiliates for all claims in any way related to the Product Information & Attributes/Diet Types/Claims. Note that if an item is linked to nutrition information from the USDA National Nutrient Database for Standard Reference, ingredients and allergens will not be displayed.



Garlic Bread

BREADSTICK GARLIC

SUPC: 7113567

Nutrition Information	
Serving size	1 breadstick (1.75 oz) (50 grams)
Amount Per Serving	
Calories	160
% Daily Value*	
Total Fat 8g	10%
Saturated Fat 1.5g	8%
Trans Fat 0g	
Cholesterol 0mg	0%
Sodium 260mg	11%
Total Carbohydrate 19g	7%
Dietary Fiber 1g	4%
Total Sugars 1g	
Includes 1g Added Sugars	2%
Protein 3g	
Vitamin D 0.0mcg	0%
Calcium 9mg	0%
Iron 1.00mg	6%
Potassium 40mg	1%

* The % Daily Value (DV) tells you how much a nutrient in a serving of food contributes to a daily diet. 2000 calories a day is used for general nutrition advice.

Ingredients:

Enriched wheat flour (wheat flour, malted barley flour, niacin, reduced iron, thiamine mononitrate, riboflavin, folic acid), water, liquid margarine (soybean oil, water, salt, hydrogenated soybean oil, mono and diglycerides, soybean lecithin (soy), sodium benzoate (preservatives), artificial butter flavor, colored with beta carotene, vitamin a palmitate added), water, liquid sugar, garlic, soybean oil, salt (salt, yellow prussiate of soda), monoglycerides (water, monoglycerides and 2% or less of each of the following: preservatives (propionic acid, phosphoric acid), dried oregano, calcium propionate, dough conditioner (wheat flour, ascorbic acid, enzymes), salt, dry yeast (inactive), vegetable oil blend (soybean oil, soy lecithin).

Contains: wheat, soy,

Contains:

Soy, Wheat

Notes

The nutrition information, ingredients/allergens and attributes/diet types displayed as well as any corresponding claims related thereto, including without limitation, claims regarding the vegetarian, vegan, Kosher, and gluten-free status of a product or item in Sysco eNutrition® (collectively, "Product Information & Attributes/Diet Types/Claims") are provided by product manufacturers and suppliers. Such information may not be complete and/or up to date. You should defer to the product packaging and/or consult with the product manufacturer for complete and current product information. Determination of whether or not a product or item meets the parameters of a specific lifestyle/diet is at your discretion and risk. Sysco and its affiliates do not guarantee the validity, accuracy or completeness of any Product



Goldfish

CRACKER GOLDFISH WHL GRAIN

SUPC: 6599405

Nutrition Information	
Serving size	1 serving (21 grams)
Amount Per Serving	
Calories	100
% Daily Value*	
Total Fat 3.5g	4%
Saturated Fat 0.5g	3%
Trans Fat 0g	
Cholesterol 0mg	0%
Sodium 170mg	7%
Total Carbohydrate 14g	5%
Dietary Fiber 1g	4%
Total Sugars 0g	
Includes 0g Added Sugars	0%
Protein 2g	
Vitamin D 0mcg	0%
Calcium 20mg	2%
Iron 0.70mg	4%
Potassium 60mg	1%

* The % Daily Value (DV) tells you how much a nutrient in a serving of food contributes to a daily diet. 2000 calories a day is used for general nutrition advice.

Ingredients:

MADE WITH SMILES AND WHOLE WHEAT FLOUR, ENRICHED WHEAT FLOUR (FLOUR, NIACIN, REDUCED IRON, THIAMINE MONONITRATE, RIBOFLAVIN, FOLIC ACID), CHEDDAR CHEESE ([CULTURED MILK, SALT, ENZYMES], ANNATTO), VEGETABLE OILS (CANOLA, SUNFLOWER AND/OR SOYBEAN), SALT, CONTAINS 2% OR LESS OF: YEAST, AUTOLYZED YEAST EXTRACT, PAPRIKA, SPICES, CELERY, BAKING SODA, MONOCALCIUM PHOSPHATE, ONION POWDER. CONTAINS: WHEAT, MILK.

Contains:

Milk, Wheat

Notes

The nutrition information, ingredients/allergens and attributes/diet types displayed as well as any corresponding claims related thereto, including without limitation, claims regarding the vegetarian, vegan, Kosher, and gluten-free status of a product or item in Sysco eNutrition® (collectively, "Product Information & Attributes/Diet Types/Claims") are provided by product manufacturers and suppliers. Such information may not be complete and/or up to date. You should defer to the product packaging and/or consult with the product manufacturer for complete and current product information. Determination of whether or not a product or item meets the parameters of a specific lifestyle/diet is at your discretion and risk. Sysco and its affiliates do not guarantee the validity, accuracy or completeness of any Product Information & Attributes/Diet Types/Claim and you hereby release Sysco and its affiliates for all claims in any way related to the Product Information & Attributes/Diet Types/Claims. Note that if an item is linked to nutrition

**CRACKER GRAHAM**

Graham Cracker

SUPC: 4914669

Nutrition Information	
Serving size	1 pack (21 grams)
Amount Per Serving	
Calories	90
% Daily Value*	
Total Fat NA	NA
Saturated Fat 0.5g	3%
Trans Fat 0g	
Cholesterol 0mg	0%
Sodium 90mg	4%
Total Carbohydrate 16g	6%
Dietary Fiber 1g	4%
Total Sugars NA	NA
Includes 5g Added Sugars	10%
Protein 1g	
Vitamin D NA	NA
Calcium 10mg	0%
Iron 0.60mg	4%
Potassium 40mg	1%
* The % Daily Value (DV) tells you how much a nutrient in a serving of food contributes to a daily diet. 2000 calories a day is used for general nutrition advice.	

Ingredients:

INGREDIENTS: GRAHAM FLOUR (WHOLE GRAIN WHEAT FLOUR), UNBLEACHED ENRICHED FLOUR (WHEAT FLOUR, NIACIN, REDUCED IRON, THIAMINE MONONITRATE {VITAMIN B1}, RIBOFLAVIN {VITAMIN B2}, FOLIC ACID), SUGAR, SOYBEAN AND/OR CANOLA OIL, MOLASSES, PALM OIL, LEAVENING (BAKING SODA, CALCIUM PHOSPHATE), SALT.
CONTAINS: WHEAT.

Contains:

Wheat

Notes

The nutrition information, ingredients/allergens and attributes/diet types displayed as well as any corresponding claims related thereto, including without limitation, claims regarding the vegetarian, vegan, Kosher, and gluten-free status of a product or item in Sysco eNutrition® (collectively, "Product Information & Attributes/Diet Types/Claims") are provided by product manufacturers and suppliers. Such information may not be complete and/or up to date. You should defer to the product packaging and/or consult with the product manufacturer for complete and current product information. Determination of whether or not a product or item meets the parameters of a specific lifestyle/diet is at your discretion and risk. Sysco and its affiliates do not guarantee the validity, accuracy or completeness of any Product Information & Attributes/Diet Types/Claim and you hereby release Sysco and its affiliates for all claims in any way related to the Product Information & Attributes/Diet Types/Claims. Note that if an item is linked to nutrition information from the USDA National Nutrient Database for Standard Reference, ingredients and allergens will not be displayed.

Graham Crackers





Grape Jelly

JELLY GRAPE

SUPC: 4184453

Nutrition Information	
Serving size	1 Tablespoon (20 grams)
Amount Per Serving	
Calories	50
% Daily Value*	
Total Fat 0g	0%
Saturated Fat 0g	0%
Trans Fat 0g	
Cholesterol 0mg	0%
Sodium 0mg	0%
Total Carbohydrate 13g	5%
Dietary Fiber 0g	0%
Total Sugars 9g	
Includes 8g Added Sugars	16%
Protein 0g	
Vitamin D 0.0mcg	0%
Calcium 0mg	0%
Iron 0.00mg	0%
Potassium 0mg	0%

* The % Daily Value (DV) tells you how much a nutrient in a serving of food contributes to a daily diet. 2000 calories a day is used for general nutrition advice.

Ingredients:

GRAPE JUICE (WATER, GRAPE JUICE CONCENTRATE), HIGH FRUCTOSE CORN SYRUP, CORN SYRUP, CONTAINS 2% OR LESS OF: FRUIT PECTIN, CITRIC ACID, SODIUM CITRATE.

Notes

The nutrition information, ingredients/allergens and attributes/diet types displayed as well as any corresponding claims related thereto, including without limitation, claims regarding the vegetarian, vegan, Kosher, and gluten-free status of a product or item in Sysco eNutrition® (collectively, "Product Information & Attributes/Diet Types/Claims") are provided by product manufacturers and suppliers. Such information may not be complete and/or up to date. You should defer to the product packaging and/or consult with the product manufacturer for complete and current product information. Determination of whether or not a product or item meets the parameters of a specific lifestyle/diet is at your discretion and risk. Sysco and its affiliates do not guarantee the validity, accuracy or completeness of any Product Information & Attributes/Diet Types/Claim and you hereby release Sysco and its affiliates for all claims in any way related to the Product Information & Attributes/Diet Types/Claims. Note that if an item is linked to nutrition information from the USDA National Nutrient Database for Standard Reference, ingredients and allergens will not be displayed.



JELLY GRAPE CUP

Grape Jelly Cups

SUPC: 2811834

Nutrition Information	
Serving size	1 Package (14 grams)
Amount Per Serving	
Calories	35
	% Daily Value*
Total Fat 0g	0%
Saturated Fat 0g	0%
Trans Fat 0g	
Cholesterol 0mg	0%
Sodium 0mg	0%
Total Carbohydrate 9g	3%
Dietary Fiber 0g	0%
Total Sugars 6g	
Includes 5g Added Sugars	10%
Protein 0g	
Vitamin D 0mcg	0%
Calcium 0mg	0%
Iron 0.10mg	0%
Potassium 0mg	0%
* The % Daily Value (DV) tells you how much a nutrient in a serving of food contributes to a daily diet. 2000 calories a day is used for general nutrition advice.	

Ingredients:

Grape Juice (Grape Juice Concentrate, Water), Corn Syrup, High Fructose Corn Syrup, Pectin, Citric Acid, Potassium Sorbate (preservative).

Notes

The nutrition information, ingredients/allergens and attributes/diet types displayed as well as any corresponding claims related thereto, including without limitation, claims regarding the vegetarian, vegan, Kosher, and gluten-free status of a product or item in Sysco eNutrition® (collectively, "Product Information & Attributes/Diet Types/Claims") are provided by product manufacturers and suppliers. Such information may not be complete and/or up to date. You should defer to the product packaging and/or consult with the product manufacturer for complete and current product information. Determination of whether or not a product or item meets the parameters of a specific lifestyle/diet is at your discretion and risk. Sysco and its affiliates do not guarantee the validity, accuracy or completeness of any Product Information & Attributes/Diet Types/Claim and you hereby release Sysco and its affiliates for all claims in any way related to the Product Information & Attributes/Diet Types/Claims. Note that if an item is linked to nutrition information from the USDA National Nutrient Database for Standard Reference, ingredients and allergens will not be displayed.



Grape Juice

SEA BREEZE
441 Main Road
Towaco, NJ 07082
Phone: (973)334-7777
Fax: (973)334-2617
www.seabreezesyrups.com

Grape Vin-Ade 1+5 Beverage Concentrate

When reconstituted, 2 fl. oz concentrate yields a 12 fl. oz. beverage

3 Gallon BIB:

Nutrition Facts	
192 servings per container	
Serving size	12 fl oz. (355 mL)
Amount per serving	
Calories	160
% Daily Value*	
Total Fat 0g	0%
Saturated Fat 0g	0%
Trans Fat 0g	
Cholesterol 0mg	0%
Sodium 15mg	1%
Total Carbohydrate 41g	15%
Dietary Fiber 0g	0%
Total Sugars 37g	
Includes 37g Added Sugars	74%
Protein 0g	
Vitamin D 0mcg	0%
Calcium 0mg	0%
Iron 0mg	0%
Potassium 0mg	0%
<small>*The % Daily Value tells you how much a nutrient in a serving of food contributes to a daily diet. 2,000 calories a day is used for general nutrition advice.</small>	

INGREDIENTS: HIGH FRUCTOSE CORN SYRUP, WATER, CITRIC ACID, NATURAL FLAVOR, SODIUM BENZOATE (PRESERVATIVE), FD&C RED #40, FD&C BLUE #1.



Grapes - Seedless

GRAPE RED SEEDLS X-LARGE

SUPC: 0668768

Nutrition Information	
Serving size	1 grape (2 grams)
Amount Per Serving	
Calories	0
% Daily Value*	
Total Fat 0g	0%
Saturated Fat 0g	0%
Trans Fat 0g	
Cholesterol 0mg	0%
Sodium 0mg	0%
Total Carbohydrate 0g	0%
Dietary Fiber 0g	0%
Total Sugars 0g	
Includes NA Added Sugars	NA
Protein 0g	
Vitamin D 0.0mcg	0%
Calcium 0mg	0%
Iron 0.01mg	0%
Potassium 0mg	0%

* The % Daily Value (DV) tells you how much a nutrient in a serving of food contributes to a daily diet. 2000 calories a day is used for general nutrition advice.

Notes

The nutrition information, ingredients/allergens and attributes/diet types displayed as well as any corresponding claims related thereto, including without limitation, claims regarding the vegetarian, vegan, Kosher, and gluten-free status of a product or item in Sysco eNutrition® (collectively, "Product Information & Attributes/Diet Types/Claims") are provided by product manufacturers and suppliers. Such information may not be complete and/or up to date. You should defer to the product packaging and/or consult with the product manufacturer for complete and current product information. Determination of whether or not a product or item meets the parameters of a specific lifestyle/diet is at your discretion and risk. Sysco and its affiliates do not guarantee the validity, accuracy or completeness of any Product Information & Attributes/Diet Types/Claim and you hereby release Sysco and its affiliates for all claims in any way related to the Product Information & Attributes/Diet Types/Claims. Note that if an item is linked to nutrition information from the USDA National Nutrient Database for Standard Reference, ingredients and allergens will not be displayed.



Green Beans

BEAN GREEN CUT 4SV BL FCY

SUPC: 4062394

Nutrition Information	
Serving size	1/2 Cup (120 grams)
Amount Per Serving	
Calories	15
% Daily Value*	
Total Fat 0g	0%
Saturated Fat 0g	0%
Trans Fat 0g	
Cholesterol 0mg	0%
Sodium 140mg	6%
Total Carbohydrate 3g	1%
Dietary Fiber 1g	4%
Total Sugars 1g	
Includes 0g Added Sugars	0%
Protein 1g	
Vitamin D 0mcg	0%
Calcium 29mg	2%
Iron 1.00mg	6%
Potassium 70mg	1%

* The % Daily Value (DV) tells you how much a nutrient in a serving of food contributes to a daily diet. 2000 calories a day is used for general nutrition advice.

Ingredients:
GREEN BEANS, WATER, SALT

Notes

The nutrition information, ingredients/allergens and attributes/diet types displayed as well as any corresponding claims related thereto, including without limitation, claims regarding the vegetarian, vegan, Kosher, and gluten-free status of a product or item in Sysco eNutrition® (collectively, "Product Information & Attributes/Diet Types/Claims") are provided by product manufacturers and suppliers. Such information may not be complete and/or up to date. You should defer to the product packaging and/or consult with the product manufacturer for complete and current product information. Determination of whether or not a product or item meets the parameters of a specific lifestyle/diet is at your discretion and risk. Sysco and its affiliates do not guarantee the validity, accuracy or completeness of any Product Information & Attributes/Diet Types/Claim and you hereby release Sysco and its affiliates for all claims in any way related to the Product Information & Attributes/Diet Types/Claims. Note that if an item is linked to nutrition information from the USDA National Nutrient Database for Standard Reference, ingredients and allergens will not be displayed.

School Equivalents	
Portion Size: 1/2 cup	ID#:
Child Nutrition Label:	No
Product Formulation Statement:	Yes
Meat/Meat Alt:	N/A oz eq
Grain/Bread:	N/A oz eq
Fruit:	N/A cup
Vegetable:	



Green Peppers

PEPPER GREEN BELL LARGE FRESH

SUPC: 1420330

Nutrition Information	
Serving size	1 each (164 grams)
Amount Per Serving	
Calories	35
	% Daily Value*
Total Fat 0g	0%
Saturated Fat 0g	0%
Trans Fat 0g	
Cholesterol 0mg	0%
Sodium 5mg	0%
Total Carbohydrate 8g	3%
Dietary Fiber 3g	10%
Total Sugars 4g	
Includes 0g Added Sugars	0%
Protein 1g	
Vitamin D 0mcg	0%
Calcium 16mg	2%
Iron 0.56mg	4%
Potassium 290mg	6%
* The % Daily Value (DV) tells you how much a nutrient in a serving of food contributes to a daily diet. 2000 calories a day is used for general nutrition advice.	

Ingredients:

Large Green Bell Pepper

Free From:

Crustaceans, Eggs, Fish, Milk, Peanuts, Soy, Tree Nuts, Wheat

Notes

The nutrition information, ingredients/allergens and attributes/diet types displayed as well as any corresponding claims related thereto, including without limitation, claims regarding the vegetarian, vegan, Kosher, and gluten-free status of a product or item in Sysco eNutrition® (collectively, "Product Information & Attributes/Diet Types/Claims") are provided by product manufacturers and suppliers. Such information may not be complete and/or up to date. You should defer to the product packaging and/or consult with the product manufacturer for complete and current product information. Determination of whether or not a product or item meets the parameters of a specific lifestyle/diet is at your discretion and risk. Sysco and its affiliates do not guarantee the validity, accuracy or completeness of any Product Information & Attributes/Diet Types/Claim and you hereby release Sysco and its affiliates for all claims in any way related to the Product Information & Attributes/Diet Types/Claims. Note that if an item is linked to nutrition information from the USDA National Nutrient Database for Standard Reference, ingredients and allergens will not be displayed.



Garbanzo Beans

BEAN GARBANZO FCY NO SULFITE

SUPC: 4062337

Nutrition Information	
Serving size	1/2 Cup (130 grams)
Amount Per Serving	
Calories	130
	% Daily Value*
Total Fat 2g	3%
Saturated Fat 0g	0%
Trans Fat 0g	
Cholesterol 0mg	0%
Sodium 140mg	6%
Total Carbohydrate 22g	8%
Dietary Fiber 4g	14%
Total Sugars 4g	
Includes 0g Added Sugars	0%
Protein 7g	
Vitamin D 0mcg	0%
Calcium 25mg	2%
Iron 2.00mg	10%
Potassium 250mg	5%
* The % Daily Value (DV) tells you how much a nutrient in a serving of food contributes to a daily diet. 2000 calories a day is used for general nutrition advice.	

Ingredients:

Prepared Garbanzo Beans, Water, Salt, Disodium EDTA to promote color retention.

Notes

The nutrition information, ingredients/allergens and attributes/diet types displayed as well as any corresponding claims related thereto, including without limitation, claims regarding the vegetarian, vegan, Kosher, and gluten-free status of a product or item in Sysco eNutrition® (collectively, "Product Information & Attributes/Diet Types/Claims") are provided by product manufacturers and suppliers. Such information may not be complete and/or up to date. You should defer to the product packaging and/or consult with the product manufacturer for complete and current product information. Determination of whether or not a product or item meets the parameters of a specific lifestyle/diet is at your discretion and risk. Sysco and its affiliates do not guarantee the validity, accuracy or completeness of any Product Information & Attributes/Diet Types/Claim and you hereby release Sysco and its affiliates for all claims in any way related to the Product Information & Attributes/Diet Types/Claims. Note that if an item is linked to nutrition information from the USDA National Nutrient Database for Standard Reference, ingredients and allergens will not be displayed.

Grilled Chicken Breast

Tyson Red Label® Fully Cooked Unbreaded Grilled Chicken Breast Filets, 4 oz.



Tyson Red Label® Fully Cooked Unbreaded Grilled Chicken Breast Filets are the versatile protein every menu needs. They can be served in an entrée like juicy lemon pepper chicken or in sandwiches with Inspired signature flavors like Cajun, teriyaki, honey mustard, or chipotle. Slice, chop, cube or shred and add this quality grilled fillet chicken to virtually any kind of salad, in veggie-filled rice or quinoa bowls, on top of pastas, stuffed into wraps or quesadillas and so much more. These perfectly seasoned and grilled filets are ready for any and every application!

PRODUCT CODE: [10383510928](#) | GTIN CODE: [00023700025463](#)

Features & Benefits

- Excellent source of protein¹
- Whole muscle breast filets provide premium quality, bite and texture with no MSG and no Trans Fat
- Visible char marks and simple seasoning for a just-grilled appearance and flavor allows you to customize any way you choose
- Versatile grilled chicken breast filets can be used on sandwiches or in endless entrée applications
- 4oz. fillet size provides great bun and plate coverage
- Fully cooked product provides BOH efficiency and easy preparation while minimizing food safety concerns
- ¹A product is considered an excellent source of protein under USDA regulations when it contains 20% or more of the Daily Reference Value for protein per RACC (Reference Amount Customarily Consumed). See 9 C.F.R 381.454

Product Claims & Allergens

Nutritional Facts

Serving Size	Amount Per Serving	% Daily Value*
Serving Size 1 Piece (112g)		112g
Amount Per Serving		160
Calories		
Total Fat	5g	6 %
Saturated Fat	2g	
Trans Fat	0g	
Cholesterol	85mg	28 %
Sodium	480mg	21 %
Total Carbohydrate	2g	1 %
Dietary Fiber	0g	0 %
Total Sugars	0g	
Added Sugars	0g	0 %
Protein	26g	52 %
Vitamin D	0mcg	0 %
Calcium	10mg	0 %
Iron	1mg	2 %
Potassium	540mg	10 %

The % Daily Value tells you how much a nutrient in a serving of food contributes to a daily diet. 2,000 calories a day is used for general nutrition advice.

To inquire if a signed copy of the product formulation statement or Child Nutrition statement is available for this item, please contact the Tyson Foodservice Customer Relations Team at 1-800-248-9766. Or email CustomerRelations@tyson.com.

More About This Product

Tyson Red Label® Fully Cooked Unbreaded Grilled Chicken Breast Filets deliver a juicy, fresh-off-the-grill flavor that's simply seasoned to be highly versatile for creating dishes customers want. Customers will love the quality, texture and bite of these whole-muscle filets, and you'll love the back-of-house time and labor savings they bring to your operation. With visible char marks for a just-grilled appearance, our salt and pepper seasoned unbreaded filets are easily customizable as the protein for salads, bowls, pastas, wraps and more. Slice, sauce, rub, glaze and slice or chop it to add everywhere across your menu. Count on the Tyson Red Label® brand to give you products that are consumer-tested and proven for the aroma, flavor and juiciness you value.* Tyson Foods Primary Consumer Research, 2024.

Ingredients

Boneless, skinless chicken breast filets with rib meat, water, modified food starch, seasoning [flavors, maltodextrin, sugar, salt, vegetable stock (carrot, onion, celery), garlic powder], salt, sodium phosphates.



Grilled Chicken Breast

CHICKEN BRST FIL GRL MRK FC

SUPC: 6459586

Nutrition Information	
Serving size	1 fillet (85g) (85 grams)
Amount Per Serving	
Calories	100
	% Daily Value*
Total Fat 2g	3%
Saturated Fat 0.5g	3%
Trans Fat 0g	
Cholesterol 55mg	18%
Sodium 320mg	14%
Total Carbohydrate 2g	1%
Dietary Fiber 0g	0%
Total Sugars 0g	
Includes 0g Added Sugars	0%
Protein 19g	
Vitamin D 0mcg	0%
Calcium 9mg	0%
Iron 0mg	0%
Potassium 320mg	7%
* The % Daily Value (DV) tells you how much a nutrient in a serving of food contributes to a daily diet. 2000 calories a day is used for general nutrition advice.	

Ingredients:

Chicken breast meat with rib meat, water, contains 2% or less of modified food starch, isolated soy protein, salt, sodium phosphates, maltodextrin, potassium chloride, dextrose, dehydrated onion, carrageenan, dehydrated garlic, yeast extract, grill flavor (from sunflower oil), corn syrup solids, flavorings, spices, natural smoke flavor.

Contains:

Soy

Notes

The nutrition information, ingredients/allergens and attributes/diet types displayed as well as any corresponding claims related thereto, including without limitation, claims regarding the vegetarian, vegan, Kosher, and gluten-free status of a product or item in Sysco eNutrition® (collectively, "Product Information & Attributes/Diet Types/Claims") are provided by product manufacturers and suppliers. Such information may not be complete and/or up to date. You should defer to the product packaging and/or consult with the product manufacturer for complete and current product information. Determination of whether or not a product or item meets the parameters of a specific lifestyle/diet is at your discretion and risk. Sysco and its affiliates do not guarantee the validity, accuracy or completeness of any Product Information & Attributes/Diet Types/Claim and you hereby release Sysco and its affiliates for all claims in any way related to the Product Information & Attributes/Diet Types/Claims. Note that if an item is linked to nutrition information from the USDA National Nutrient Database for Standard Reference, ingredients and allergens will not be displayed.



Guacamole

GUACAMOLE LIME BLEND HPP FRZ

SUPC: 2754277

Nutrition Information	
Serving size	2 Tablespoon (30 grams)
Amount Per Serving	
Calories	50
	% Daily Value*
Total Fat 5g	6%
Saturated Fat 1g	5%
Trans Fat 0g	
Cholesterol 0mg	0%
Sodium 170mg	7%
Total Carbohydrate 2g	1%
Dietary Fiber 1g	4%
Total Sugars 1g	
Includes 0g Added Sugars	0%
Protein 1g	
Vitamin D 0mcg	0%
Calcium 4mg	0%
Iron 0.30mg	2%
Potassium 150mg	3%
* The % Daily Value (DV) tells you how much a nutrient in a serving of food contributes to a daily diet. 2000 calories a day is used for general nutrition advice.	

Ingredients:

Hass Avocado, Tomato, Onion, Salt, Sugar, Sodium Acid Pyrophosphate and Ascorbic Acid (to maintain natural color), Brined Jalapeño Puree (Jalapeño Pepper, Water, Salt, Acetic Acid), Garlic, Sodium Alginate, Xanthan Gum, Lime Juice Concentrate, Citric Acid, Dehydrated Cilantro.

Free From:

Crustaceans, Eggs, Fish, Milk, Peanuts, Sesame seeds, Soy, Tree Nuts, Wheat

Notes

The nutrition information, ingredients/allergens and attributes/diet types displayed as well as any corresponding claims related thereto, including without limitation, claims regarding the vegetarian, vegan, Kosher, and gluten-free status of a product or item in Sysco eNutrition® (collectively, "Product Information & Attributes/Diet Types/Claims") are provided by product manufacturers and suppliers. Such information may not be complete and/or up to date. You should defer to the product packaging and/or consult with the product manufacturer for complete and current product information. Determination of whether or not a product or item meets the parameters of a specific lifestyle/diet is at your discretion and risk. Sysco and its affiliates do not guarantee the validity, accuracy or completeness of any Product Information & Attributes/Diet Types/Claim and you hereby release Sysco and its affiliates for all claims in any way related to the Product Information & Attributes/Diet Types/Claims. Note that if an item is linked to nutrition information from the USDA National Nutrient Database for Standard Reference, ingredients and allergens will not be displayed.

Hamburgers

Customer Name: TALL PINES DAY CAMP

Account Number: 138396

Beef Patty 75/25 Seasoned Homestyle Individual Quick Freeze

60/5.3 OZ 2580058



Ingredients

Beef, water, bread crumbs (flour (unbleached wheat flour, barley malt), salt, yeast, soybean oil, ammonium chloride, calcium propionate), seasoning (salt, dextrose, sugar, maltodextrin, beef stock, natural flavorings, beef extract, tomato powder, beef flavor (rendered beef fat, flavoring), beef fat, citric acid, onion powder, modified food starch, vinegar powder (maltodextrin, modified food starch, vinegar solids), disodium inosinate, disodium guanylate), natural flavoring.
Contains: Wheat.

Nutrition Facts

5.3 oz. Servings per container

Serving Size 5.3 oz. (149g)

Amount per Serving

Calories **410**

% Daily Value*

Total Fat 34g **44%**

Saturated Fat 13g **65%**

Trans Fat

Cholesterol 100mg **33%**

Sodium 460mg **20%**

Total Carbohydrate 3g **1%**

Dietary Fiber 0g **0%**

Total Sugars

Includes NA Added Sugars

Protein 22g **44%**

Vitamin D NA

Calcium 52mg **4%**

Iron 2.70mg **15%**

Potassium NA

* The % Daily Value (DV) tells you how much a nutrient in a serving of food contributes to a daily diet. 2,000 calories a day is used for general nutrition advice.



Hardboiled Eggs

EGG HARDBOILED WHL PEEL SEL

SUPC: 8847491

Nutrition Information	
Serving size	1 egg (50 grams)
Amount Per Serving	
Calories	80
% Daily Value*	
Total Fat 5g	6%
Saturated Fat 1.5g	8%
Trans Fat 0g	
Cholesterol 185mg	62%
Sodium 60mg	3%
Total Carbohydrate 1g	0%
Dietary Fiber 0g	0%
Total Sugars 1g	
Includes 0g Added Sugars	0%
Protein 6g	
Vitamin D 1.0mcg	6%
Calcium 25mg	2%
Iron 1.00mg	6%
Potassium 65mg	1%

* The % Daily Value (DV) tells you how much a nutrient in a serving of food contributes to a daily diet. 2000 calories a day is used for general nutrition advice.

Ingredients:

Hard Cooked Eggs, Water, Citric Acid, Sodium Benzoate, Nisin Preparation (as preservatives). CONTAINS: EGGS.

Contains:

Eggs

Notes

The nutrition information, ingredients/allergens and attributes/diet types displayed as well as any corresponding claims related thereto, including without limitation, claims regarding the vegetarian, vegan, Kosher, and gluten-free status of a product or item in Sysco eNutrition® (collectively, "Product Information & Attributes/Diet Types/Claims") are provided by product manufacturers and suppliers. Such information may not be complete and/or up to date. You should defer to the product packaging and/or consult with the product manufacturer for complete and current product information. Determination of whether or not a product or item meets the parameters of a specific lifestyle/diet is at your discretion and risk. Sysco and its affiliates do not guarantee the validity, accuracy or completeness of any Product Information & Attributes/Diet Types/Claim and you hereby release Sysco and its affiliates for all claims in any way related to the Product Information & Attributes/Diet Types/Claims. Note that if an item is linked to nutrition information from the USDA National Nutrient Database for Standard Reference, ingredients and allergens will not be displayed.



Honey Mustard Dipping Sauce

SAUCE MUSTARD HNY DIP CUP

SUPC: 4551727

Nutrition Information	
Serving size	1 Ounces (28 grams)
Amount Per Serving	
Calories	110
	% Daily Value*
Total Fat 9g	12%
Saturated Fat 1.5g	8%
Trans Fat 0g	
Cholesterol 10mg	3%
Sodium 240mg	10%
Total Carbohydrate 8g	3%
Dietary Fiber 0g	0%
Total Sugars 7g	
Includes 7g Added Sugars	14%
Protein 0g	
Vitamin D 0mcg	0%
Calcium 0mg	0%
Iron 0mg	0%
Potassium 0mg	0%
<small>* The % Daily Value (DV) tells you how much a nutrient in a serving of food contributes to a daily diet. 2000 calories a day is used for general nutrition advice.</small>	

Ingredients:

Soybean Oil, High Fructose Corn Syrup, Water, Distilled Vinegar, Honey, Corn Syrup, Egg Yolks, Contains less than 2% of Salt, Mustard Seed, Xanthan Gum, Onion*, Spices, Mustard Bran, Turmeric, Paprika, Natural & Artificial Flavors, Sodium Benzoate (a Preservative), Calcium Disodium EDTA added to Protect Flavor, Caramel Color, Oleoresin Turmeric and Paprika (Colors).

*Dehydrated Contains: Egg.

Contains:

Eggs

Notes

The nutrition information, ingredients/allergens and attributes/diet types displayed as well as any corresponding claims related thereto, including without limitation, claims regarding the vegetarian, vegan, Kosher, and gluten-free status of a product or item in Sysco eNutrition® (collectively, "Product Information & Attributes/Diet Types/Claims") are provided by product manufacturers and suppliers. Such information may not be complete and/or up to date. You should defer to the product packaging and/or consult with the product manufacturer for complete and current product information. Determination of whether or not a product or item meets the parameters of a specific lifestyle/diet is at your discretion and risk. Sysco and its affiliates do not guarantee the validity, accuracy or completeness of any Product Information & Attributes/Diet Types/Claim and you hereby release Sysco and its affiliates for all claims in any way related to the Product Information & Attributes/Diet Types/Claims. Note that if an item is linked to nutrition information from the USDA National Nutrient Database for Standard Reference, ingredients and allergens will not be displayed.



Honey Mustard Dressing

DRESSING HONEY MUSTARD

SUPC: 4156444

Nutrition Information	
Serving size	2 Tablespoon (30 grams)
Amount Per Serving	
Calories	140
% Daily Value*	
Total Fat 14g	18%
Saturated Fat 2.5g	13%
Trans Fat 0g	
Cholesterol 15mg	5%
Sodium 140mg	6%
Total Carbohydrate 4g	1%
Dietary Fiber 0g	0%
Total Sugars 4g	
Includes 4g Added Sugars	8%
Protein 0g	
Vitamin D 0mcg	0%
Calcium 0mg	0%
Iron 0mg	0%
Potassium 0mg	0%

* The % Daily Value (DV) tells you how much a nutrient in a serving of food contributes to a daily diet. 2000 calories a day is used for general nutrition advice.

Ingredients:

Soybean Oil, Prepared Mustard (Water, Distilled Vinegar, Mustard Seed, Salt, Mustard Bran, Turmeric, Natural Flavor, Paprika), High Fructose Corn Syrup, Water, Distilled Vinegar, Honey, Egg Yolks, Contains less than 2% of Salt, Mustard Seed, Paprika, Xanthan Gum, Oleoresin Turmeric (Color), Natural & Artificial Flavor, Sodium Benzoate (a Preservative), Calcium Disodium EDTA added to Protect Flavor. Contains: Egg.

Contains:

Eggs

Notes

The nutrition information, ingredients/allergens and attributes/diet types displayed as well as any corresponding claims related thereto, including without limitation, claims regarding the vegetarian, vegan, Kosher, and gluten-free status of a product or item in Sysco eNutrition® (collectively, "Product Information & Attributes/Diet Types/Claims") are provided by product manufacturers and suppliers. Such information may not be complete and/or up to date. You should defer to the product packaging and/or consult with the product manufacturer for complete and current product information. Determination of whether or not a product or item meets the parameters of a specific lifestyle/diet is at your discretion and risk. Sysco and its affiliates do not guarantee the validity, accuracy or completeness of any Product Information & Attributes/Diet Types/Claim and you hereby release Sysco and its affiliates for all claims in any way related to the Product Information & Attributes/Diet Types/Claims. Note that if an item is linked to nutrition information from the USDA National Nutrient Database for Standard Reference, ingredients and allergens will not be displayed.



Hot Dogs

FRANK ALL-BEEF 8X1 6"

SUPC: 4802688

Nutrition Information	
Serving size	1 Frank (57g) (57 grams)
Amount Per Serving	
Calories	170
% Daily Value*	
Total Fat 15g	19%
Saturated Fat 6g	30%
Trans Fat 0.5g	
Cholesterol 35mg	12%
Sodium 560mg	24%
Total Carbohydrate 2g	1%
Dietary Fiber 0g	0%
Total Sugars 0g	
Includes 0g Added Sugars	0%
Protein 6g	
Vitamin D 0mcg	0%
Calcium 0mg	0%
Iron 0.80mg	4%
Potassium 0mg	0%
* The % Daily Value (DV) tells you how much a nutrient in a serving of food contributes to a daily diet. 2000 calories a day is used for general nutrition advice.	

Ingredients:

Kosher Beef, Water, Contains 2% Or Less Of: Salt, Spice, Sodium Lactate, Paprika, Hydrolyzed Soy Protein, Garlic Powder, Sodium Diacetate, Sodium Erythorbate, Flavoring, Sodium Nitrite. CONTAINS: SOY.

Contains:

Soy

Notes

The nutrition information, ingredients/allergens and attributes/diet types displayed as well as any corresponding claims related thereto, including without limitation, claims regarding the vegetarian, vegan, Kosher, and gluten-free status of a product or item in Sysco eNutrition® (collectively, "Product Information & Attributes/Diet Types/Claims") are provided by product manufacturers and suppliers. Such information may not be complete and/or up to date. You should defer to the product packaging and/or consult with the product manufacturer for complete and current product information. Determination of whether or not a product or item meets the parameters of a specific lifestyle/diet is at your discretion and risk. Sysco and its affiliates do not guarantee the validity, accuracy or completeness of any Product Information & Attributes/Diet Types/Claim and you hereby release Sysco and its affiliates for all claims in any way related to the Product Information & Attributes/Diet Types/Claims. Note that if an item is linked to nutrition information from the USDA National Nutrient Database for Standard Reference, ingredients and allergens will not be displayed.



Hot Dogs

FRANK ALL-BEEF 4X1 6 IN

SUPC: 1137702

Nutrition Information	
Serving size	1 Link (113 grams)
Amount Per Serving	
Calories	330
% Daily Value*	
Total Fat 30g	38%
Saturated Fat 12g	60%
Trans Fat 2g	
Cholesterol 55mg	18%
Sodium 1060mg	46%
Total Carbohydrate 2g	1%
Dietary Fiber 0g	0%
Total Sugars 0g	
Includes 0g Added Sugars	0%
Protein 13g	
Vitamin D 0.2mcg	2%
Calcium 30mg	2%
Iron 1.80mg	10%
Potassium 280mg	6%
* The % Daily Value (DV) tells you how much a nutrient in a serving of food contributes to a daily diet. 2000 calories a day is used for general nutrition advice.	

Ingredients:

Beef, Water, Contains 2% Or Less Of Salt, Spices, Sorbitol, Sodium Phosphates, Paprika, Sodium Erythorbate, Flavorings, Sodium Nitrite.

Free From:

Crustaceans, Eggs, Fish, Milk, Peanuts, Sesame seeds, Soy, Tree Nuts, Wheat

Notes

The nutrition information, ingredients/allergens and attributes/diet types displayed as well as any corresponding claims related thereto, including without limitation, claims regarding the vegetarian, vegan, Kosher, and gluten-free status of a product or item in Sysco eNutrition® (collectively, "Product Information & Attributes/Diet Types/Claims") are provided by product manufacturers and suppliers. Such information may not be complete and/or up to date. You should defer to the product packaging and/or consult with the product manufacturer for complete and current product information. Determination of whether or not a product or item meets the parameters of a specific lifestyle/diet is at your discretion and risk. Sysco and its affiliates do not guarantee the validity, accuracy or completeness of any Product Information & Attributes/Diet Types/Claim and you hereby release Sysco and its affiliates for all claims in any way related to the Product Information & Attributes/Diet Types/Claims. Note that if an item is linked to nutrition information from the USDA National Nutrient Database for Standard Reference, ingredients and allergens will not be displayed.

Hot Dog Buns

Nutrition Facts for Stroehmann - Enriched Hot Dog Buns

Nutrition Facts

Serving Size

Whole Recipe (43g)

Calories 120

% Daily Value *

Total Fat 1.5g	2%
Saturated Fat 0g	0%
Trans Fat 0g	
Cholesterol 0mg	0%
Sodium 249.8mg	10%
Total Carbohydrate 23g	8%
Dietary Fiber 0.99g	4%
Total Sugars 3g	6%
Includes 3g Added Sugars	6%
Protein 4g	8%
Vitamin C --mg	--%
Vitamin D --mcg	--%
Iron 1.2mg	7%
Calcium 45.2mg	3%
Potassium 34.8mg	1%
Phosphorus --mg	--%

*The % Daily Value (DV) tells you how much a nutrient in a serving of food contributes to a daily diet. 2,000 calories a day is used for general nutrition advice.

Ingredients: ENRICHED WHEAT FLOUR [FLOUR, MALTED BARLEY FLOUR, REDUCED IRON, NIACIN, THIAMIN MONONITRATE (VITAMIN B1), RIBOFLAVIN (VITAMIN B2), FOLIC ACID], WATER, SUGAR, YEAST, VEGETABLE OIL (SOYBEAN), SALT, WHEAT GLUTEN, PRESERVATIVES (CALCIUM PROPIONATE, SORBIC ACID), GRAIN VINEGAR, DATEM, MONOGLYCERIDES, CELLULOSE GUM, CITRIC ACID, SOY LECITHIN.

UPC: 071673034104

Nutrition summary:

Calories 120	Fat 1.5g	Carbs 23g	Protein 4g
------------------------	--------------------	---------------------	----------------------

There are **120 calories** in 1 bun (43 g) of Stroehmann Hamburger Buns.

Calorie breakdown: **11% fat**, **76% carbs**, **13% protein**.



Hot Dog Bun

BUN HOT DOG WHITE 6 HINGD

SUPC: 7223080

Nutrition Information	
Serving size	1 Roll (48 g/ 1.7 oz) (48 grams)
Amount Per Serving	
Calories	130
% Daily Value*	
Total Fat 2g	3%
Saturated Fat 0g	0%
Trans Fat 0g	
Cholesterol 0mg	0%
Sodium 230mg	10%
Total Carbohydrate 24g	9%
Dietary Fiber less than 1g	4%
Total Sugars 3g	
Includes 3g Added Sugars	6%
Protein 5g	
Vitamin D 0mcg	0%
Calcium 30mg	2%
Iron 1.40mg	8%
Potassium 40mg	1%
* The % Daily Value (DV) tells you how much a nutrient in a serving of food contributes to a daily diet. 2000 calories a day is used for general nutrition advice.	

Ingredients:

UNBLEACHED ENRICHED FLOUR (WHEAT FLOUR, MALTED BARLEY FLOUR, NIACIN, REDUCED IRON, THIAMIN MONONITRATE, RIBOFLAVIN, FOLIC ACID), WATER, HIGH FRUCTOSE CORN SYRUP, YEAST, WHEAT GLUTEN, SOYBEAN OIL, CONTAINS 2% OR LESS OF EACH OF THE FOLLOWING: SALT, DOUGH CONDITIONERS (CONTAINS ONE OR MORE OF THE FOLLOWING: SODIUM STEAROYL LACTYLATE, CALCIUM STEAROYL LACTYLATE, MONOGLYCERIDES, MONO- AND DIGLYCERIDES, DISTILLED MONOGLYCERIDES, CALCIUM PEROXIDE, CALCIUM IODATE, DATEM, ETHOXYLATED MONO- AND DIGLYCERIDES, ENZYMES, ASCORBIC ACID), SESAME FLOUR, CALCIUM PROPIONATE (TO RETARD SPOILAGE). CONTAINS: WHEAT, SESAME.

Contains:

Sesame seeds, Wheat

Notes

The nutrition information, ingredients/allergens and attributes/diet types displayed as well as any corresponding claims related thereto, including without limitation, claims regarding the vegetarian, vegan, Kosher, and gluten-free status of a product or item in Sysco eNutrition® (collectively, "Product Information & Attributes/Diet Types/Claims") are provided by product manufacturers and suppliers. Such information may not be complete and/or up to date. You should defer to the product packaging and/or consult with the product manufacturer for complete and current product information. Determination of whether or not a product or item meets the parameters of a specific lifestyle/diet is at



Hot Sauce

SAUCE HOT

SUPC: 7198375

Nutrition Information	
Serving size	1 Serving (5 grams)
Amount Per Serving	
Calories	0
% Daily Value*	
Total Fat 0g	0%
Saturated Fat 0g	0%
Trans Fat 0g	
Cholesterol 0mg	0%
Sodium 110mg	5%
Total Carbohydrate 0g	0%
Dietary Fiber 0g	0%
Total Sugars 0g	
Includes 0g Added Sugars	0%
Protein 0g	
Vitamin D 0.0mcg	0%
Calcium 0mg	0%
Iron 0.00mg	0%
Potassium 10mg	0%
* The % Daily Value (DV) tells you how much a nutrient in a serving of food contributes to a daily diet. 2000 calories a day is used for general nutrition advice.	

Ingredients:

Water, Peppers (Arbol & Piquin), Salt, Vinegar, Garlic Powder, Spices, Xanthan Gum (Thickener) & Natural Flavor.

Notes

The nutrition information, ingredients/allergens and attributes/diet types displayed as well as any corresponding claims related thereto, including without limitation, claims regarding the vegetarian, vegan, Kosher, and gluten-free status of a product or item in Sysco eNutrition® (collectively, "Product Information & Attributes/Diet Types/Claims") are provided by product manufacturers and suppliers. Such information may not be complete and/or up to date. You should defer to the product packaging and/or consult with the product manufacturer for complete and current product information. Determination of whether or not a product or item meets the parameters of a specific lifestyle/diet is at your discretion and risk. Sysco and its affiliates do not guarantee the validity, accuracy or completeness of any Product Information & Attributes/Diet Types/Claim and you hereby release Sysco and its affiliates for all claims in any way related to the Product Information & Attributes/Diet Types/Claims. Note that if an item is linked to nutrition information from the USDA National Nutrient Database for Standard Reference, ingredients and allergens will not be displayed.



Hot Sauce

SAUCE HOT TEXAS PETE

SUPC: 4884995

Nutrition Information	
Serving size	100 Gram (100 grams)
Amount Per Serving	
Calories	0
% Daily Value*	
Total Fat 0g	0%
Saturated Fat NA	NA
Trans Fat NA	NA
Cholesterol NA	NA
Sodium 115mg	5%
Total Carbohydrate 0g	0%
Dietary Fiber NA	NA
Total Sugars 0g	
Includes NA Added Sugars	NA
Protein 0g	
Vitamin D 0.0mcg	0%
Calcium 0mg	0%
Iron 0.02mg	0%
Potassium 5mg	0%

* The % Daily Value (DV) tells you how much a nutrient in a serving of food contributes to a daily diet. 2000 calories a day is used for general nutrition advice.

Ingredients:

Vinegar, Aged Peppers (Peppers, Salt, Vinegar), Water, Xanthan Gum and Benzoate of Soda (To Preserve Freshness and Flavor)

May Contain:

Soy

Free From:

Crustaceans, Eggs, Fish, Milk, Molluscs, Peanuts, Sesame seeds, Shellfish, Wheat

Notes

The nutrition information, ingredients/allergens and attributes/diet types displayed as well as any corresponding claims related thereto, including without limitation, claims regarding the vegetarian, vegan, Kosher, and gluten-free status of a product or item in Sysco eNutrition® (collectively, "Product Information & Attributes/Diet Types/Claims") are provided by product manufacturers and suppliers. Such information may not be complete and/or up to date. You should defer to the product packaging and/or consult with the product manufacturer for complete and current product information. Determination of whether or not a product or item meets the parameters of a specific lifestyle/diet is at your discretion and risk. Sysco and its affiliates do not guarantee the validity, accuracy or completeness of any Product Information & Attributes/Diet Types/Claim and you hereby release Sysco and its affiliates for all claims in any way related to the Product Information & Attributes/Diet Types/Claims. Note that if an item is linked to nutrition information from the USDA National Nutrient Database for Standard Reference, ingredients and allergens will not be displayed.



SPREAD HUMMUS PLAIN

Hummus

SUPC: 3958717

Nutrition Information	
Serving size	1 Serving (28 grams)
Amount Per Serving	
Calories	70
% Daily Value*	
Total Fat 3.5g	4%
Saturated Fat 0g	0%
Trans Fat 0g	
Cholesterol 0mg	0%
Sodium 140mg	6%
Total Carbohydrate 7g	3%
Dietary Fiber 2g	7%
Total Sugars 1g	
Includes 0g Added Sugars	0%
Protein 3g	
Vitamin D 0mcg	0%
Calcium 12mg	0%
Iron 1.00mg	6%
Potassium 15mg	0%
* The % Daily Value (DV) tells you how much a nutrient in a serving of food contributes to a daily diet. 2000 calories a day is used for general nutrition advice.	

Ingredients:

Cooked Chickpeas, Water, Sesame Tahini, Lemon Juice, Soybean Oil and/or Canola Oil, Seasoning (Salt, Sugar, Cellulose, Modified Corn Starch, Spices, Citric Acid), Contains 2% or less of: Garlic Puree (Garlic, Citric Acid, Ascorbic Acid), Soy Lecithin, Natural Flavors CONTAINS: Soy

Contains:

Sesame seeds, Soy

Free From:

Crustaceans, Eggs, Fish, Milk, Molluscs, Peanuts, Shellfish, Tree Nuts, Wheat

Notes

The nutrition information, ingredients/allergens and attributes/diet types displayed as well as any corresponding claims related thereto, including without limitation, claims regarding the vegetarian, vegan, Kosher, and gluten-free status of a product or item in Sysco eNutrition® (collectively, "Product Information & Attributes/Diet Types/Claims") are provided by product manufacturers and suppliers. Such information may not be complete and/or up to date. You should defer to the product packaging and/or consult with the product manufacturer for complete and current product information. Determination of whether or not a product or item meets the parameters of a specific lifestyle/diet is at your discretion and risk. Sysco and its affiliates do not guarantee the validity, accuracy or completeness of any Product Information & Attributes/Diet Types/Claim and you hereby release Sysco and its affiliates for all claims in any way related to the Product Information & Attributes/Diet Types/Claims. Note that if an item is linked to nutrition information from the USDA National Nutrient Database for Standard Reference, ingredients and allergens will not be displayed.



Italian Dressing

DRESSING ITAL CRMY

SUPC: 4488862

Nutrition Information	
Serving size	1 Serving (31 grams)
Amount Per Serving	
Calories	110
% Daily Value*	
Total Fat 10g	13%
Saturated Fat 1g	5%
Trans Fat 0g	
Cholesterol 0mg	0%
Sodium 260mg	11%
Total Carbohydrate 7g	3%
Dietary Fiber 0g	0%
Total Sugars 6g	
Includes 6g Added Sugars	12%
Protein 0g	
Vitamin D 0mcg	0%
Calcium 0mg	0%
Iron 0mg	0%
Potassium 0mg	0%
* The % Daily Value (DV) tells you how much a nutrient in a serving of food contributes to a daily diet. 2000 calories a day is used for general nutrition advice.	

Ingredients:

SOYBEAN OIL, DISTILLED VINEGAR, HIGH FRUCTOSE CORN SYRUP, WATER, CONTAINS LESS THAN 2% OF SALT, GARLIC,* MUSTARD FLOUR, PROPYLENE GLYCOL ALGINATE, NATURAL FLAVOR, SPICE, ONION,* XANTHAN GUM, CARROT,* RED BELL PEPPER.* *DRIED.

Free From:

Peanuts

Notes

The nutrition information, ingredients/allergens and attributes/diet types displayed as well as any corresponding claims related thereto, including without limitation, claims regarding the vegetarian, vegan, Kosher, and gluten-free status of a product or item in Sysco eNutrition® (collectively, "Product Information & Attributes/Diet Types/Claims") are provided by product manufacturers and suppliers. Such information may not be complete and/or up to date. You should defer to the product packaging and/or consult with the product manufacturer for complete and current product information. Determination of whether or not a product or item meets the parameters of a specific lifestyle/diet is at your discretion and risk. Sysco and its affiliates do not guarantee the validity, accuracy or completeness of any Product Information & Attributes/Diet Types/Claim and you hereby release Sysco and its affiliates for all claims in any way related to the Product Information & Attributes/Diet Types/Claims. Note that if an item is linked to nutrition information from the USDA National Nutrient Database for Standard Reference, ingredients and allergens will not be displayed.



SPRINKLE RAINBOW 6 COLR

SUPC: 4201848

*Jimmys - Rainbow
(AKA Sprinkles)*

Nutrition Information	
Serving size	1 Serving (4 grams)
Amount Per Serving	
Calories	20
	% Daily Value*
Total Fat 1g	1%
Saturated Fat 0.5g	3%
Trans Fat 0g	
Cholesterol 0mg	0%
Sodium 0mg	0%
Total Carbohydrate 3g	1%
Dietary Fiber 0g	0%
Total Sugars 2g	
Includes 2g Added Sugars	4%
Protein 0g	
Vitamin D 0.0mcg	0%
Calcium 0mg	0%
Iron 0.00mg	0%
Potassium 0mg	0%
* The % Daily Value (DV) tells you how much a nutrient in a serving of food contributes to a daily diet. 2000 calories a day is used for general nutrition advice.	

Ingredients:

Sugar, Corn Starch, Palm oil & Palm kernel oil, Dextrin, Soy lecithin, Confectioner's Glaze, Carnauba Wax, FD&C yellow #5 lake, FD&C yellow #6 lake, FD&C blue #1 lake, FD&C red#40 lake, FD&C red#3.

Contains:

Soy

Notes

The nutrition information, ingredients/allergens and attributes/diet types displayed as well as any corresponding claims related thereto, including without limitation, claims regarding the vegetarian, vegan, Kosher, and gluten-free status of a product or item in Sysco eNutrition® (collectively, "Product Information & Attributes/Diet Types/Claims") are provided by product manufacturers and suppliers. Such information may not be complete and/or up to date. You should defer to the product packaging and/or consult with the product manufacturer for complete and current product information. Determination of whether or not a product or item meets the parameters of a specific lifestyle/diet is at your discretion and risk. Sysco and its affiliates do not guarantee the validity, accuracy or completeness of any Product Information & Attributes/Diet Types/Claim and you hereby release Sysco and its affiliates for all claims in any way related to the Product Information & Attributes/Diet Types/Claims. Note that if an item is linked to nutrition information from the USDA National Nutrient Database for Standard Reference, ingredients and allergens will not be displayed.

**KETCHUP FANCY**

Ketchup

SUPC: 5686266

Nutrition Information	
Serving size	1 Tablespoon (17 grams)
Amount Per Serving	
Calories	20
% Daily Value*	
Total Fat 0g	0%
Saturated Fat 0g	0%
Trans Fat 0g	
Cholesterol 0mg	0%
Sodium 160mg	7%
Total Carbohydrate 5g	2%
Dietary Fiber 0g	0%
Total Sugars 4g	
Includes 4g Added Sugars	8%
Protein 0g	
Vitamin D 0mcg	0%
Calcium 0mg	0%
Iron 0mg	0%
Potassium 0mg	0%
* The % Daily Value (DV) tells you how much a nutrient in a serving of food contributes to a daily diet. 2000 calories a day is used for general nutrition advice.	

Ingredients:

Tomato Concentrate, High Fructose Corn Syrup, Distilled Vinegar, Corn Syrup, Salt, Less Than 2% Of: Spice, Onion Powder, Natural Flavors.

Notes

The nutrition information, ingredients/allergens and attributes/diet types displayed as well as any corresponding claims related thereto, including without limitation, claims regarding the vegetarian, vegan, Kosher, and gluten-free status of a product or item in Sysco eNutrition® (collectively, "Product Information & Attributes/Diet Types/Claims") are provided by product manufacturers and suppliers. Such information may not be complete and/or up to date. You should defer to the product packaging and/or consult with the product manufacturer for complete and current product information. Determination of whether or not a product or item meets the parameters of a specific lifestyle/diet is at your discretion and risk. Sysco and its affiliates do not guarantee the validity, accuracy or completeness of any Product Information & Attributes/Diet Types/Claim and you hereby release Sysco and its affiliates for all claims in any way related to the Product Information & Attributes/Diet Types/Claims. Note that if an item is linked to nutrition information from the USDA National Nutrient Database for Standard Reference, ingredients and allergens will not be displayed.



Ketchup - Packets

KETCHUP PACKET FCY FOIL

SUPC: 8747859

Nutrition Information	
Serving size	1 Packet (9 grams)
Amount Per Serving	
Calories	10
% Daily Value*	
Total Fat 0g	0%
Saturated Fat 0g	0%
Trans Fat 0g	
Cholesterol 0mg	0%
Sodium 85mg	4%
Total Carbohydrate 2g	1%
Dietary Fiber 0g	0%
Total Sugars 2g	
Includes 2g Added Sugars	4%
Protein 0g	
Vitamin D 0.0mcg	0%
Calcium 0mg	0%
Iron 0.00mg	0%
Potassium 0mg	0%
* The % Daily Value (DV) tells you how much a nutrient in a serving of food contributes to a daily diet. 2000 calories a day is used for general nutrition advice.	

Ingredients:

Tomato Concentrate, High Fructose Corn Syrup, Distilled Vinegar, Corn Syrup, Salt, Less Than 2% Of: Spice, Onion Powder, Natural Flavors.

Notes

The nutrition information, ingredients/allergens and attributes/diet types displayed as well as any corresponding claims related thereto, including without limitation, claims regarding the vegetarian, vegan, Kosher, and gluten-free status of a product or item in Sysco eNutrition® (collectively, "Product Information & Attributes/Diet Types/Claims") are provided by product manufacturers and suppliers. Such information may not be complete and/or up to date. You should defer to the product packaging and/or consult with the product manufacturer for complete and current product information. Determination of whether or not a product or item meets the parameters of a specific lifestyle/diet is at your discretion and risk. Sysco and its affiliates do not guarantee the validity, accuracy or completeness of any Product Information & Attributes/Diet Types/Claim and you hereby release Sysco and its affiliates for all claims in any way related to the Product Information & Attributes/Diet Types/Claims. Note that if an item is linked to nutrition information from the USDA National Nutrient Database for Standard Reference, ingredients and allergens will not be displayed.



Kiwi Strawberry Juice

SEA BREEZE
441 Main Road
Towaco, NJ 07082
Phone: (973)334-7777
Fax: (973)334-2617
www.seabreezesyrups.com

Kiwi Strawberry 1+5 Beverage Concentrate

When reconstituted, 2 fl. oz. concentrate yields a 12 fl. oz. beverage

3 Gallon BIB:

Nutrition Facts	
192 servings per container	
Serving Size	12 fl. oz. (355 mL)
Amount per serving	
Calories	170
% Daily Value*	
Total Fat 0g	0%
Saturated Fat 0g	0%
Trans Fat 0g	
Cholesterol 0mg	0%
Sodium 10mg	0%
Total Carbohydrate 42g	15%
Dietary Fiber 0g	0%
Total Sugars 41g	
Includes 41g Added Sugars	82%
Protein 0g	
Vitamin D 0mcg	0%
Calcium 0mg	0%
Iron 0mg	0%
Potassium 0mg	0%
* The % Daily Value (DV) tells you how much a nutrient in a serving of food contributes to a daily diet. 2,000 calories a day is used for general advice	

INGREDIENTS: High Fructose Corn Syrup, Water, Natural and Artificial Flavors, Citric Acid, Sodium Benzoate (Preservative), Gum Acacia, Ester Gum, FD&C Red #40

Kosher Hot Dog
View all 

Nutrition facts and ingredients

Nutrition Facts

6 servings per container

Serving Size

1.00 frank

Amount Per Serving

Calories

150

% Daily Value*

Total Fat 13g **17%**

Saturated Fat 5g **25%**

Trans Fat 0.5g

Cholesterol 30mg **10%**

Sodium 480mg **21%**

Total Carbohydrate 2g **1%**

Dietary Fiber 0g **0%**

Total Sugars 0g

Includes Added Sugars 0g **0%**

Protein 6g

Vitamin D 0%

Calcium 0%

Iron 4%

Potassium 0%

* The % Daily Value (DV) tells you how much a nutrient in a serving of food contributes to a daily diet. 2,000 calories a day is used for general nutrition advice.

Ingredients

Kosher Beef, Water, Contains 2% or Less of Salt Spice, Sodium Lactate, Paprika, Hydrolyzed Soy Protein, Garlic Powder, Sodium Diacetate, Sodium Erythorbate, Flavoring, Sodium Nitrite.

Allergens and safety warnings

Keep Refrigerated. Contains Soy. Child Safety: When serving hot dogs to young children, cut hot dogs lengthwise, then into small, easy-to-swallow pieces. Children should eat while seated and be under adult supervision.



Lemon-Sweet Tea

SEA BREEZE
441 Main Road
Towaco, NJ 07082
Phone: (973)334-7777
Fax: (973)334-2617
www.seabreezesyrups.com

Tea – Lemon Sweet

1+5 Beverage Concentrate

When reconstituted, 2 fl. oz concentrate yields a 12 fl. oz. beverage

3 Gallon BIB:

Nutrition Facts	
192 servings per container	
Serving size 12 fl. oz. (355 mL)	
Amount per serving	
Calories	140
	% Daily Value
Total Fat 0g	0%
Sodium 10mg	0%
Total Carbohydrate 36g	13%
Total Sugars 34g	
Includes 34g Added Sugars 68%	
Protein 0g	
Not a significant source of saturated fat, trans fat, cholesterol, dietary fiber, vitamin D, calcium, iron and potassium.	
The % Daily Value tells you how much a nutrient in a serving of food contributes to a daily diet. 2,000 calories a day is used for general nutrition advice.	

INGREDIENTS: HIGH FRUCTOSE CORN SYRUP, WATER, CITRIC ACID, TEA, CARAMEL COLOR, NATURAL FLAVORS, SODIUM BENZOATE (PRESERVATIVE), POTASSIUM SORBATE (PRESERVATIVE).



Lemon Water Ice

Philadelphia Water Ice Factory

8354 State Road, Philadelphia, PA 19136

www.philawaterice.com • (215) 533-0400

Lemon

2.5 Gal Tub

Ingredients: Water, Sugar, Corn Syrup, Natural Flavor, Lemon Juice Concentrate, Lemon Pulp Sacs, Citric Acid, Xanthan Gum, Guar Gum, Cellulose.

Manufactured in a Peanut Free Plant



PAREVE

Nutrition Facts

About 60 servings per container

Serving size 2/3 cup (129g)

Amount per serving

Calories 120

% Daily Value*

Total Fat 0g **0%**

Saturated Fat 0g **0%**

Trans Fat 0g

Cholesterol 0mg **0%**

Sodium 7mg **0%**

Total Carbohydrate 29g **11%**

Dietary Fiber 0g **0%**

Total Sugars 25g

Includes 25g Added Sugars **50%**

Protein 0g

Vit. D 0mcg 0% • Calcium 0mg 0%

Iron 0mg 0% • Potas. 0mg 0%

* The % Daily Value (DV) tells you how much a nutrient in a serving of food contributes to a daily diet. 2,000 calories a day is used for general nutrition advice.



Lemonade

SEA BREEZE
441 Main Road
Towaco, NJ 07082
Phone: (973)334-7777
Fax: (973)334-2617
www.seabreezesyrups.com

Lemonade 1+5 Beverage Concentrate

When reconstituted, 2 fl. oz concentrate yields a 12 fl. oz. beverage

3 Gallon BIB:

Nutrition Facts	
192 servings per container	
Serving size	12 fl. oz. (355 ml)
Amount per serving	
Calories	170
	% Daily Value*
Total Fat 0g	0%
Saturated Fat 0g	0%
Trans Fat 0g	
Cholesterol 0mg	0%
Sodium 15mg	1%
Total Carbohydrate 40g	15%
Dietary Fiber 0g	0%
Total Sugars 37g	
Includes 36g Added Sugars	72%
Protein 0g	
Vitamin D 0mcg	0%
Calcium 2mg	0%
Iron 0mg	0%
Potassium 0mg	0%
*The % Daily Value tells you how much a nutrient in a serving of food contributes to a daily diet. 2,000 calories a day is used for general nutrition advice.	

INGREDIENTS: HIGH FRUCTOSE CORN SYRUP, WATER, CITRIC ACID, LEMON JUICE CONCENTRATE, NATURAL AND ARTIFICIAL FLAVORS, SODIUM BENZOATE (PRESERVATIVE), GUM ACACIA, ESTER GUM, FD&C YELLOW #5.



Lemon Ice Cups

ICE ITALIAN LEMON CUP

SUPC: 2560357

Nutrition Information	
Serving size	1 unit (4 fl. oz.) (118 MLT)
Amount Per Serving	
Calories	80
% Daily Value*	
Total Fat 0g	0%
Saturated Fat 0g	0%
Trans Fat 0g	
Cholesterol 0mg	0%
Sodium 0mg	0%
Total Carbohydrate 20g	7%
Dietary Fiber 0g	0%
Total Sugars 19g	
Includes 19g Added Sugars	38%
Protein 0g	
Vitamin D 0.0mcg	0%
Calcium 20mg	2%
Iron 0.00mg	0%
Potassium 0mg	0%

* The % Daily Value (DV) tells you how much a nutrient in a serving of food contributes to a daily diet. 2000 calories a day is used for general nutrition advice.

Ingredients:

WATER, SUGAR, LEMON JUICE FROM CONCENTRATE, CITRIC ACID, ACACIA AND GUAR GUMS, ASCORBIC ACID (VITAMIN C), NATURAL FLAVOR, XANTHAN GUM.

Notes

The nutrition information, ingredients/allergens and attributes/diet types displayed as well as any corresponding claims related thereto, including without limitation, claims regarding the vegetarian, vegan, Kosher, and gluten-free status of a product or item in Sysco eNutrition® (collectively, "Product Information & Attributes/Diet Types/Claims") are provided by product manufacturers and suppliers. Such information may not be complete and/or up to date. You should defer to the product packaging and/or consult with the product manufacturer for complete and current product information. Determination of whether or not a product or item meets the parameters of a specific lifestyle/diet is at your discretion and risk. Sysco and its affiliates do not guarantee the validity, accuracy or completeness of any Product Information & Attributes/Diet Types/Claim and you hereby release Sysco and its affiliates for all claims in any way related to the Product Information & Attributes/Diet Types/Claims. Note that if an item is linked to nutrition information from the USDA National Nutrient Database for Standard Reference, ingredients and allergens will not be displayed.



LETTUCE FRESH TENDER GREENS

Lettuce

SUPC: 1132040

Nutrition Information	
Serving size	85 Grams (85 grams)
Amount Per Serving	
Calories	20
% Daily Value*	
Total Fat 0g	0%
Saturated Fat 0g	0%
Trans Fat NA	NA
Cholesterol 0mg	0%
Sodium 75mg	3%
Total Carbohydrate 3g	1%
Dietary Fiber NA	NA
Total Sugars 1g	
Includes NA Added Sugars	NA
Protein 1g	
Vitamin D NA	NA
Calcium 56mg	4%
Iron 1.00mg	6%
Potassium 110mg	2%
* The % Daily Value (DV) tells you how much a nutrient in a serving of food contributes to a daily diet. 2000 calories a day is used for general nutrition advice.	

Ingredients:

50% Petite Green and 50% Red Leaf Lettuce

Free From:

Does not contain obligatory allergens as listed in the regulations

Notes

The nutrition information, ingredients/allergens and attributes/diet types displayed as well as any corresponding claims related thereto, including without limitation, claims regarding the vegetarian, vegan, Kosher, and gluten-free status of a product or item in Sysco eNutrition® (collectively, "Product Information & Attributes/Diet Types/Claims") are provided by product manufacturers and suppliers. Such information may not be complete and/or up to date. You should defer to the product packaging and/or consult with the product manufacturer for complete and current product information. Determination of whether or not a product or item meets the parameters of a specific lifestyle/diet is at your discretion and risk. Sysco and its affiliates do not guarantee the validity, accuracy or completeness of any Product Information & Attributes/Diet Types/Claim and you hereby release Sysco and its affiliates for all claims in any way related to the Product Information & Attributes/Diet Types/Claims. Note that if an item is linked to nutrition information from the USDA National Nutrient Database for Standard Reference, ingredients and allergens will not be displayed.



Lettuce - Iceberg

LETTUCE ICEBERG PREMIUM PLTIZD

SUPC: 1908318

Nutrition Information	
Serving size	1 (100 grams)
Amount Per Serving	
Calories	15
% Daily Value*	
Total Fat 0g	0%
Saturated Fat 0g	0%
Trans Fat 0g	
Cholesterol 0mg	0%
Sodium 10mg	0%
Total Carbohydrate 3g	1%
Dietary Fiber 1g	4%
Total Sugars 2g	
Includes NA Added Sugars	NA
Protein less than 1g	
Vitamin D NA	NA
Calcium NA	NA
Iron NA	NA
Potassium NA	NA

* The % Daily Value (DV) tells you how much a nutrient in a serving of food contributes to a daily diet. 2000 calories a day is used for general nutrition advice.

Ingredients:

Fresh Lettuce Iceberg

Notes

The nutrition information, ingredients/allergens and attributes/diet types displayed as well as any corresponding claims related thereto, including without limitation, claims regarding the vegetarian, vegan, Kosher, and gluten-free status of a product or item in Sysco eNutrition® (collectively, "Product Information & Attributes/Diet Types/Claims") are provided by product manufacturers and suppliers. Such information may not be complete and/or up to date. You should defer to the product packaging and/or consult with the product manufacturer for complete and current product information. Determination of whether or not a product or item meets the parameters of a specific lifestyle/diet is at your discretion and risk. Sysco and its affiliates do not guarantee the validity, accuracy or completeness of any Product Information & Attributes/Diet Types/Claim and you hereby release Sysco and its affiliates for all claims in any way related to the Product Information & Attributes/Diet Types/Claims. Note that if an item is linked to nutrition information from the USDA National Nutrient Database for Standard Reference, ingredients and allergens will not be displayed.



Lettuce - mixed

LETTUCE SAL MIX SEPARATE FRESH

SUPC: 1675602

Nutrition Information	
Serving size	3.5 oz. (100 grams)
Amount Per Serving	
Calories	15
	% Daily Value*
Total Fat 0g	0%
Saturated Fat 0g	0%
Trans Fat NA	NA
Cholesterol 0mg	0%
Sodium 15mg	1%
Total Carbohydrate 3g	1%
Dietary Fiber 1g	4%
Total Sugars 2g	
Includes 0g Added Sugars	0%
Protein less than 1g	
Vitamin D 0.0mcg	0%
Calcium 20mg	2%
Iron 0.40mg	2%
Potassium 150mg	3%
<small>* The % Daily Value (DV) tells you how much a nutrient in a serving of food contributes to a daily diet. 2000 calories a day is used for general nutrition advice.</small>	

Ingredients:

Iceberg Lettuce head, Carrot, Red cabbage

Notes

The nutrition information, ingredients/allergens and attributes/diet types displayed as well as any corresponding claims related thereto, including without limitation, claims regarding the vegetarian, vegan, Kosher, and gluten-free status of a product or item in Sysco eNutrition® (collectively, "Product Information & Attributes/Diet Types/Claims") are provided by product manufacturers and suppliers. Such information may not be complete and/or up to date. You should defer to the product packaging and/or consult with the product manufacturer for complete and current product information. Determination of whether or not a product or item meets the parameters of a specific lifestyle/diet is at your discretion and risk. Sysco and its affiliates do not guarantee the validity, accuracy or completeness of any Product Information & Attributes/Diet Types/Claim and you hereby release Sysco and its affiliates for all claims in any way related to the Product Information & Attributes/Diet Types/Claims. Note that if an item is linked to nutrition information from the USDA National Nutrient Database for Standard Reference, ingredients and allergens will not be displayed.



Lettuce Romaine

LETTUCE ROMAINE CHOPPED FRESH

SUPC: 2189819

Nutrition Information	
Serving size	3.5 oz (100 grams)
Amount Per Serving	
Calories	15
% Daily Value*	
Total Fat 0g	0%
Saturated Fat 0g	0%
Trans Fat NA	NA
Cholesterol 0mg	0%
Sodium 10mg	0%
Total Carbohydrate 3g	1%
Dietary Fiber 2g	8%
Total Sugars 1g	
Includes NA Added Sugars	NA
Protein 1g	
Vitamin D NA	NA
Calcium 33mg	2%
Iron 1.00mg	6%
Potassium 250mg	5%

* The % Daily Value (DV) tells you how much a nutrient in a serving of food contributes to a daily diet. 2000 calories a day is used for general nutrition advice.

Ingredients:

Lettuce romaine

Notes

The nutrition information, ingredients/allergens and attributes/diet types displayed as well as any corresponding claims related thereto, including without limitation, claims regarding the vegetarian, vegan, Kosher, and gluten-free status of a product or item in Sysco eNutrition® (collectively, "Product Information & Attributes/Diet Types/Claims") are provided by product manufacturers and suppliers. Such information may not be complete and/or up to date. You should defer to the product packaging and/or consult with the product manufacturer for complete and current product information. Determination of whether or not a product or item meets the parameters of a specific lifestyle/diet is at your discretion and risk. Sysco and its affiliates do not guarantee the validity, accuracy or completeness of any Product Information & Attributes/Diet Types/Claim and you hereby release Sysco and its affiliates for all claims in any way related to the Product Information & Attributes/Diet Types/Claims. Note that if an item is linked to nutrition information from the USDA National Nutrient Database for Standard Reference, ingredients and allergens will not be displayed.



LETTUCE SHREDDED 1/8 IN FRESH

Lettuce - Shredded

SUPC: 1675529

Nutrition Information	
Serving size	1/2 Cup (85 grams)
Amount Per Serving	
Calories	15
% Daily Value*	
Total Fat 0g	0%
Saturated Fat 0g	0%
Trans Fat 0g	
Cholesterol 0mg	0%
Sodium 10mg	0%
Total Carbohydrate 3g	1%
Dietary Fiber 1g	4%
Total Sugars 2g	
Includes NA Added Sugars	NA
Protein 1g	
Vitamin D NA	NA
Calcium 26mg	2%
Iron 0.36mg	2%
Potassium NA	NA
* The % Daily Value (DV) tells you how much a nutrient in a serving of food contributes to a daily diet. 2000 calories a day is used for general nutrition advice.	

Ingredients:

Lettuce

Free From:

Crustaceans

Notes

The nutrition information, ingredients/allergens and attributes/diet types displayed as well as any corresponding claims related thereto, including without limitation, claims regarding the vegetarian, vegan, Kosher, and gluten-free status of a product or item in Sysco eNutrition® (collectively, "Product Information & Attributes/Diet Types/Claims") are provided by product manufacturers and suppliers. Such information may not be complete and/or up to date. You should defer to the product packaging and/or consult with the product manufacturer for complete and current product information. Determination of whether or not a product or item meets the parameters of a specific lifestyle/diet is at your discretion and risk. Sysco and its affiliates do not guarantee the validity, accuracy or completeness of any Product Information & Attributes/Diet Types/Claim and you hereby release Sysco and its affiliates for all claims in any way related to the Product Information & Attributes/Diet Types/Claims. Note that if an item is linked to nutrition information from the USDA National Nutrient Database for Standard Reference, ingredients and allergens will not be displayed.



ENTREE MACARONI & CHEESE

SUPC: 2491603

Macaroni + Cheese

Nutrition Information	
Serving size	1 Cup (241 g) (241 grams)
Amount Per Serving	
Calories	320
% Daily Value*	
Total Fat 16g	21%
Saturated Fat 6g	30%
Trans Fat 0g	
Cholesterol 30mg	10%
Sodium 720mg	31%
Total Carbohydrate 33g	12%
Dietary Fiber 1g	4%
Total Sugars 3g	
Includes 1g Added Sugars	2%
Protein 12g	
Vitamin D 0mcg	0%
Calcium 210mg	15%
Iron 1.00mg	6%
Potassium 160mg	3%

* The % Daily Value (DV) tells you how much a nutrient in a serving of food contributes to a daily diet. 2000 calories a day is used for general nutrition advice.

Ingredients:

WATER, ENRICHED MACARONI (WHEAT FLOUR, EGG WHITES, NIACIN, FERROUS SULFATE, THIAMINE MONONITRATE, RIBOFLAVIN, FOLIC ACID), PASTEURIZED PROCESS CHEESE SPREAD (AMERICAN CHEESE [MILK, CULTURES, SALT, ENZYMES], WATER, WHEY, SODIUM PHOSPHATE, WHEY PROTEIN CONCENTRATE, SKIM MILK, SALT, MILK FAT, PAPRIKA OLEORESIN [COLOR], ANNATTO [COLOR]), CHEDDAR CHEESE (MILK, CULTURES, SALT, ENZYMES), CANOLA OIL, CONTAINS LESS THAN 2% OF: WHEAT FLOUR, MODIFIED FOOD STARCH, CHEDDAR CHEESE (CULTURED MILK, SALT, ENZYMES), SUGAR, SALT, SOY PROTEIN CONCENTRATE, PAPRIKA EXTRACT FOR COLOR, NATURAL FLAVOR, BETA CAROTENE. CONTAINS: EGG, WHEAT, MILK, SOY.

Contains:

Eggs, Milk, Soy, Wheat

Notes

The nutrition information, ingredients/allergens and attributes/diet types displayed as well as any corresponding claims related thereto, including without limitation, claims regarding the vegetarian, vegan, Kosher, and gluten-free status of a product or item in Sysco eNutrition® (collectively, "Product Information & Attributes/Diet Types/Claims") are provided by product manufacturers and suppliers. Such information may not be complete and/or up to date. You should defer to the product packaging and/or consult with the product manufacturer for complete and current product



ORANGE MANDARIN SECT LS

SUPC: 1397819

Mandarin Oranges

Nutrition Information	
Serving size	1 Serving (123 grams)
Amount Per Serving	
Calories	100
% Daily Value*	
Total Fat 0g	0%
Saturated Fat 0g	0%
Trans Fat 0g	
Cholesterol 0mg	0%
Sodium 0mg	0%
Total Carbohydrate 24g	9%
Dietary Fiber 1g	4%
Total Sugars 20g	
Includes 15g Added Sugars	30%
Protein 1g	
Vitamin D 0mcg	0%
Calcium 30mg	2%
Iron 0mg	0%
Potassium 110mg	2%
* The % Daily Value (DV) tells you how much a nutrient in a serving of food contributes to a daily diet. 2000 calories a day is used for general nutrition advice.	

Ingredients:

MANDARIN ORANGES, WATER, SUGAR, AND CITRIC ACID.

Free From:

Crustaceans, Eggs, Fish, Milk, Molluscs, Peanuts, Sesame seeds, Shellfish, Soy, Tree Nuts, Wheat

Notes

The nutrition information, ingredients/allergens and attributes/diet types displayed as well as any corresponding claims related thereto, including without limitation, claims regarding the vegetarian, vegan, Kosher, and gluten-free status of a product or item in Sysco eNutrition® (collectively, "Product Information & Attributes/Diet Types/Claims") are provided by product manufacturers and suppliers. Such information may not be complete and/or up to date. You should defer to the product packaging and/or consult with the product manufacturer for complete and current product information. Determination of whether or not a product or item meets the parameters of a specific lifestyle/diet is at your discretion and risk. Sysco and its affiliates do not guarantee the validity, accuracy or completeness of any Product Information & Attributes/Diet Types/Claim and you hereby release Sysco and its affiliates for all claims in any way related to the Product Information & Attributes/Diet Types/Claims. Note that if an item is linked to nutrition information from the USDA National Nutrient Database for Standard Reference, ingredients and allergens will not be displayed.


ORANGE MANDRN WHL SEC LGHT SYR

SUPC: 3548385

Mandarin Oranges - Light Syrup

Nutrition Information	
Serving size	1/2 cup (140 grams)
Amount Per Serving	
Calories	70
% Daily Value*	
Total Fat 0g	0%
Saturated Fat 0g	0%
Trans Fat 0g	
Cholesterol 0mg	0%
Sodium 10mg	0%
Total Carbohydrate 17g	6%
Dietary Fiber less than 1g	4%
Total Sugars 17g	
Includes 14g Added Sugars	28%
Protein 1g	
Vitamin D 0mcg	0%
Calcium 26mg	2%
Iron 0.72mg	4%
Potassium 150mg	3%
<small>* The % Daily Value (DV) tells you how much a nutrient in a serving of food contributes to a daily diet. 2000 calories a day is used for general nutrition advice.</small>	

Ingredients:

MANDARIN ORANGES, WATER, SUGAR, CITRIC ACID.

Notes

The nutrition information, ingredients/allergens and attributes/diet types displayed as well as any corresponding claims related thereto, including without limitation, claims regarding the vegetarian, vegan, Kosher, and gluten-free status of a product or item in Sysco eNutrition® (collectively, "Product Information & Attributes/Diet Types/Claims") are provided by product manufacturers and suppliers. Such information may not be complete and/or up to date. You should defer to the product packaging and/or consult with the product manufacturer for complete and current product information. Determination of whether or not a product or item meets the parameters of a specific lifestyle/diet is at your discretion and risk. Sysco and its affiliates do not guarantee the validity, accuracy or completeness of any Product Information & Attributes/Diet Types/Claim and you hereby release Sysco and its affiliates for all claims in any way related to the Product Information & Attributes/Diet Types/Claims. Note that if an item is linked to nutrition information from the USDA National Nutrient Database for Standard Reference, ingredients and allergens will not be displayed.


MARGARINE BTR EUROP STY ZTF

Margarine

SUPC: 4546923

Nutrition Information	
Serving size	1 Tablespoon (14 grams)
Amount Per Serving	
Calories	100
	% Daily Value*
Total Fat 11g	14%
Saturated Fat 5g	25%
Trans Fat 0g	
Cholesterol 0mg	0%
Sodium 110mg	5%
Total Carbohydrate 0g	0%
Dietary Fiber 0g	0%
Total Sugars 0g	
Includes 0g Added Sugars	0%
Protein 0g	
Vitamin D 0mcg	0%
Calcium 0mg	0%
Iron 0mg	0%
Potassium 0mg	0%
<small>* The % Daily Value (DV) tells you how much a nutrient in a serving of food contributes to a daily diet. 2000 calories a day is used for general nutrition advice.</small>	

Ingredients:

Palm Oil, Water, Soybean Oil, Butter (Cream, Salt), Contains Less Than 2% Of Salt, Nonfat Dry Milk, Natural And Artificial Flavors, Potassium Sorbate (Preservative), Soy Lecithin, Vitamin A Palmitate, Beta Carotene (Color).
Contains: Milk, Soybean.

Contains:

Milk, Soy

Notes

The nutrition information, ingredients/allergens and attributes/diet types displayed as well as any corresponding claims related thereto, including without limitation, claims regarding the vegetarian, vegan, Kosher, and gluten-free status of a product or item in Sysco eNutrition® (collectively, "Product Information & Attributes/Diet Types/Claims") are provided by product manufacturers and suppliers. Such information may not be complete and/or up to date. You should defer to the product packaging and/or consult with the product manufacturer for complete and current product information. Determination of whether or not a product or item meets the parameters of a specific lifestyle/diet is at your discretion and risk. Sysco and its affiliates do not guarantee the validity, accuracy or completeness of any Product Information & Attributes/Diet Types/Claim and you hereby release Sysco and its affiliates for all claims in any way related to the Product Information & Attributes/Diet Types/Claims. Note that if an item is linked to nutrition information from the USDA National Nutrient Database for Standard Reference, ingredients and allergens will not be displayed.



MARGARINE SPREAD ZTF

SUPC: 4546949

Margarine Spread

Nutrition Information	
Serving size	3 Portion (15 grams)
Amount Per Serving	
Calories	60
% Daily Value*	
Total Fat 7g	9%
Saturated Fat 2g	10%
Trans Fat 0g	
Cholesterol 0mg	0%
Sodium 95mg	4%
Total Carbohydrate 0g	0%
Dietary Fiber 0g	0%
Total Sugars 0g	
Includes 0g Added Sugars	0%
Protein 0g	
Vitamin D 0mcg	0%
Calcium 0mg	0%
Iron 0mg	0%
Potassium 0mg	0%
* The % Daily Value (DV) tells you how much a nutrient in a serving of food contributes to a daily diet. 2000 calories a day is used for general nutrition advice.	

Ingredients:

Water, Liquid And Hydrogenated Soybean Oil, Palm Oil, Contains Less Than 2% Of Salt, Vegetable Mono & Diglycerides, Potassium Sorbate (A Preservative), Citric Acid, Natural & Artificial Flavor, Beta Carotene (Color), Vitamin A Palmitate Added.

Notes

The nutrition information, ingredients/allergens and attributes/diet types displayed as well as any corresponding claims related thereto, including without limitation, claims regarding the vegetarian, vegan, Kosher, and gluten-free status of a product or item in Sysco eNutrition® (collectively, "Product Information & Attributes/Diet Types/Claims") are provided by product manufacturers and suppliers. Such information may not be complete and/or up to date. You should defer to the product packaging and/or consult with the product manufacturer for complete and current product information. Determination of whether or not a product or item meets the parameters of a specific lifestyle/diet is at your discretion and risk. Sysco and its affiliates do not guarantee the validity, accuracy or completeness of any Product Information & Attributes/Diet Types/Claim and you hereby release Sysco and its affiliates for all claims in any way related to the Product Information & Attributes/Diet Types/Claims. Note that if an item is linked to nutrition information from the USDA National Nutrient Database for Standard Reference, ingredients and allergens will not be displayed.

Sysco Shop

Marshmallow Large White

Marshmallows

Customer Name: TALL PINES DAY CAMP

Account Number: 138396

12/1 LB 4101481



Ingredients

Corn Syrup, Sugar, Modified Food Starch (Corn), Gelatin, Water, Dextrose, Natural Flavors, Tetrasodium Pyrophosphate

Nutrition Facts

4 pieces Gram Servings per container

Serving Size **4 pieces Gram (28g)**

Amount per Serving

Calories 90

% Daily Value*

Total Fat 0g 0%

Saturated Fat 0g 0%

Trans Fat

Cholesterol 0mg 0%

Sodium 15mg 1%

Total Carbohydrate 23g 8%

Dietary Fiber 0g 0%

Total Sugars

Includes 17 g Added Sugars **34%**

Protein 1g 2%

Vitamin D NA

Calcium 1mg 0%

Iron 0.03mg 0%

Potassium 0mg 0%

* The % Daily Value (DV) tells you how much a nutrient in a serving of food contributes to a daily diet. 2,000 calories a day is used for general nutrition advice.



MAYONNAISE HEAVY DUTY

SUPC: 4002432

Mayonnaise

Nutrition Information	
Serving size	1 Tablespoon (14 grams)
Amount Per Serving	
Calories	100
% Daily Value*	
Total Fat 11g	14%
Saturated Fat 2g	10%
Trans Fat 0g	
Cholesterol less than 5mg	2%
Sodium 65mg	3%
Total Carbohydrate 1g	0%
Dietary Fiber 0g	0%
Total Sugars 0g	
Includes 0g Added Sugars	0%
Protein 0g	
Vitamin D 0mcg	0%
Calcium 0mg	0%
Iron 0mg	0%
Potassium 0mg	0%

* The % Daily Value (DV) tells you how much a nutrient in a serving of food contributes to a daily diet. 2000 calories a day is used for general nutrition advice.

Ingredients:

Soybean Oil, Water, Corn Syrup, Egg Yolks, Distilled Vinegar, Contains less than 2% of Salt, Mustard Seed, Calcium Disodium EDTA added To Protect Flavor.

Contains: Egg.

Contains:

Eggs

Notes

The nutrition information, ingredients/allergens and attributes/diet types displayed as well as any corresponding claims related thereto, including without limitation, claims regarding the vegetarian, vegan, Kosher, and gluten-free status of a product or item in Sysco eNutrition® (collectively, "Product Information & Attributes/Diet Types/Claims") are provided by product manufacturers and suppliers. Such information may not be complete and/or up to date. You should defer to the product packaging and/or consult with the product manufacturer for complete and current product information. Determination of whether or not a product or item meets the parameters of a specific lifestyle/diet is at your discretion and risk. Sysco and its affiliates do not guarantee the validity, accuracy or completeness of any Product Information & Attributes/Diet Types/Claim and you hereby release Sysco and its affiliates for all claims in any way related to the Product Information & Attributes/Diet Types/Claims. Note that if an item is linked to nutrition information from the USDA National Nutrient Database for Standard Reference, ingredients and allergens will not be displayed.



MAYONNAISE PACKET

SUPC: 4534319

Mayonnaise - Packets

Nutrition Information	
Serving size	1 Serving (12 grams)
Amount Per Serving	
Calories	80
% Daily Value*	
Total Fat 8g	10%
Saturated Fat 1.5g	8%
Trans Fat 0g	
Cholesterol less than 5mg	2%
Sodium 80mg	3%
Total Carbohydrate less than 1g	0%
Dietary Fiber 0g	0%
Total Sugars 0g	
Includes 0g Added Sugars	0%
Protein 0g	
Vitamin D 0.0mcg	0%
Calcium 0mg	0%
Iron 0.00mg	0%
Potassium 0mg	0%

* The % Daily Value (DV) tells you how much a nutrient in a serving of food contributes to a daily diet. 2000 calories a day is used for general nutrition advice.

Ingredients:

SOYBEAN OIL, WHITE DISTILLED VINEGAR, CORN SYRUP, WATER, EGG YOLKS, CONTAINS LESS THAN 2% OF SALT, WHOLE EGGS, LEMON JUICE CONCENTRATE, EGG YOLK SOLIDS, CALCIUM DISODIUM EDTA (ADDED TO PROTECT FLAVOR), NATURAL FLAVORS (CONTAINS MUSTARD)

Contains:

Eggs

Notes

The nutrition information, ingredients/allergens and attributes/diet types displayed as well as any corresponding claims related thereto, including without limitation, claims regarding the vegetarian, vegan, Kosher, and gluten-free status of a product or item in Sysco eNutrition® (collectively, "Product Information & Attributes/Diet Types/Claims") are provided by product manufacturers and suppliers. Such information may not be complete and/or up to date. You should defer to the product packaging and/or consult with the product manufacturer for complete and current product information. Determination of whether or not a product or item meets the parameters of a specific lifestyle/diet is at your discretion and risk. Sysco and its affiliates do not guarantee the validity, accuracy or completeness of any Product Information & Attributes/Diet Types/Claim and you hereby release Sysco and its affiliates for all claims in any way related to the Product Information & Attributes/Diet Types/Claims. Note that if an item is linked to nutrition information from the USDA National Nutrient Database for Standard Reference, ingredients and allergens will not be displayed.



Meatballs

MEATBALL ITALIAN PRCK 1 OZ

SUPC: 1894575

Nutrition Information	
Serving size	1 Serving (85 grams)
Amount Per Serving	
Calories	230
% Daily Value*	
Total Fat 19g	24%
Saturated Fat 7g	35%
Trans Fat 1g	
Cholesterol 45mg	15%
Sodium 460mg	20%
Total Carbohydrate 6g	2%
Dietary Fiber 2g	7%
Total Sugars 1g	
Includes 0g Added Sugars	0%
Protein 12g	
Vitamin D 0mcg	0%
Calcium 30mg	2%
Iron 1.50mg	8%
Potassium 280mg	6%

* The % Daily Value (DV) tells you how much a nutrient in a serving of food contributes to a daily diet. 2000 calories a day is used for general nutrition advice.

Ingredients:

BEEF, WATER, TEXTURED SOY PROTEIN (SOY FLOUR, CARAMEL COLOR), ONIONS, BREAD CRUMBS (WHEAT FLOUR, SALT, YEAST), CONTAINS 2% OR LESS OF EACH OF THE FOLLOWING: CORN SYRUP, DEHYDRATED GARLIC, DEHYDRATED ONIONS, GRILL FLAVOR (FROM SUNFLOWER OIL), MALTODEXTRIN, NATURAL FLAVOR, PARSLEY FLAKES, PEPPER (BLACK AND WHITE), ROMANO CHEESE (MADE FROM SHEEP'S MILK, SALT, ENZYME), SALT, SOY PROTEIN CONCENTRATE, SUGAR, TURMERIC EXTRACT.

Contains:

Milk, Soy, Wheat

Notes

The nutrition information, ingredients/allergens and attributes/diet types displayed as well as any corresponding claims related thereto, including without limitation, claims regarding the vegetarian, vegan, Kosher, and gluten-free status of a product or item in Sysco eNutrition® (collectively, "Product Information & Attributes/Diet Types/Claims") are provided by product manufacturers and suppliers. Such information may not be complete and/or up to date. You should defer to the product packaging and/or consult with the product manufacturer for complete and current product information. Determination of whether or not a product or item meets the parameters of a specific lifestyle/diet is at your discretion and risk. Sysco and its affiliates do not guarantee the validity, accuracy or completeness of any Product Information & Attributes/Diet Types/Claim and you hereby release Sysco and its affiliates for all claims in any way related to the Product Information & Attributes/Diet Types/Claims. Note that if an item is linked to nutrition

**MILK 2% BTL ESL**

SUPC: 7192671

Milk - 2% 0

Nutrition Information	
Serving size	1 Container (8 FL OZ) (236 MLT)
Amount Per Serving	
Calories	130
% Daily Value*	
Total Fat 5g	6%
Saturated Fat 3g	15%
Trans Fat 0g	
Cholesterol 20mg	7%
Sodium 130mg	6%
Total Carbohydrate 13g	5%
Dietary Fiber 0g	0%
Total Sugars 12g	
Includes 0g Added Sugars	0%
Protein 9g	
Vitamin D 3.0mcg	15%
Calcium 309mg	25%
Iron 0.00mg	0%
Potassium 420mg	9%
* The % Daily Value (DV) tells you how much a nutrient in a serving of food contributes to a daily diet. 2000 calories a day is used for general nutrition advice.	

Ingredients:

Reduced Fat Milk, Vitamin A Palmitate, Vitamin D3.
Contains Milk.

Contains:

Milk

Notes

The nutrition information, ingredients/allergens and attributes/diet types displayed as well as any corresponding claims related thereto, including without limitation, claims regarding the vegetarian, vegan, Kosher, and gluten-free status of a product or item in Sysco eNutrition® (collectively, "Product Information & Attributes/Diet Types/Claims") are provided by product manufacturers and suppliers. Such information may not be complete and/or up to date. You should defer to the product packaging and/or consult with the product manufacturer for complete and current product information. Determination of whether or not a product or item meets the parameters of a specific lifestyle/diet is at your discretion and risk. Sysco and its affiliates do not guarantee the validity, accuracy or completeness of any Product Information & Attributes/Diet Types/Claim and you hereby release Sysco and its affiliates for all claims in any way related to the Product Information & Attributes/Diet Types/Claims. Note that if an item is linked to nutrition information from the USDA National Nutrient Database for Standard Reference, ingredients and allergens will not be displayed.


CHEESE MOZZARELLA LMPS FTNR SH
Mozzarella Cheese
SUPC: 2388783

Nutrition Information	
Serving size	1/4 Cup (28 grams)
Amount Per Serving	
Calories	80
% Daily Value*	
Total Fat 5g	6%
Saturated Fat 3g	15%
Trans Fat 0g	
Cholesterol 15mg	5%
Sodium 200mg	9%
Total Carbohydrate 2g	1%
Dietary Fiber less than 1g	4%
Total Sugars 0g	
Includes 0g Added Sugars	0%
Protein 7g	
Vitamin D 0mcg	0%
Calcium 190mg	15%
Iron 0mg	0%
Potassium 0mg	0%
* The % Daily Value (DV) tells you how much a nutrient in a serving of food contributes to a daily diet. 2000 calories a day is used for general nutrition advice.	

Ingredients:

LOW MOISTURE PART SKIM MOZZARELLA CHEESE (PASTEURIZED PART SKIM MILK, CHEESE CULTURES, SALT, ENZYMES), POWDERED CELLULOSE (TO PREVENT CAKING), NATAMYCIN (A NATURAL MOLD INHIBITOR). CONTAINS: MILK

Contains:

Milk

Notes

The nutrition information, ingredients/allergens and attributes/diet types displayed as well as any corresponding claims related thereto, including without limitation, claims regarding the vegetarian, vegan, Kosher, and gluten-free status of a product or item in Sysco eNutrition® (collectively, "Product Information & Attributes/Diet Types/Claims") are provided by product manufacturers and suppliers. Such information may not be complete and/or up to date. You should defer to the product packaging and/or consult with the product manufacturer for complete and current product information. Determination of whether or not a product or item meets the parameters of a specific lifestyle/diet is at your discretion and risk. Sysco and its affiliates do not guarantee the validity, accuracy or completeness of any Product Information & Attributes/Diet Types/Claim and you hereby release Sysco and its affiliates for all claims in any way related to the Product Information & Attributes/Diet Types/Claims. Note that if an item is linked to nutrition information from the USDA National Nutrient Database for Standard Reference, ingredients and allergens will not be displayed.



Mozzarella - Cheese Stick

CHEESE MOZZ STRING

SUPC: 4384214

Nutrition Information	
Serving size	1 Piece (28 grams)
Amount Per Serving	
Calories	80
% Daily Value*	
Total Fat 6g	8%
Saturated Fat 3g	15%
Trans Fat 0g	
Cholesterol 20mg	7%
Sodium 200mg	9%
Total Carbohydrate 1g	0%
Dietary Fiber 0g	0%
Total Sugars less than 1g	
Includes 0g Added Sugars	0%
Protein 6g	
Vitamin D 0mcg	0%
Calcium 220mg	15%
Iron 0mg	0%
Potassium 0mg	0%

* The % Daily Value (DV) tells you how much a nutrient in a serving of food contributes to a daily diet. 2000 calories a day is used for general nutrition advice.

Ingredients:

Low Moisture Part Skim Mozzarella Cheese (Pasteurized Part Skim Milk, Cheese Cultures, Salt, Enzymes).

CONTAINS: MILK.

Contains:

Milk

Notes

The nutrition information, ingredients/allergens and attributes/diet types displayed as well as any corresponding claims related thereto, including without limitation, claims regarding the vegetarian, vegan, Kosher, and gluten-free status of a product or item in Sysco eNutrition® (collectively, "Product Information & Attributes/Diet Types/Claims") are provided by product manufacturers and suppliers. Such information may not be complete and/or up to date. You should defer to the product packaging and/or consult with the product manufacturer for complete and current product information. Determination of whether or not a product or item meets the parameters of a specific lifestyle/diet is at your discretion and risk. Sysco and its affiliates do not guarantee the validity, accuracy or completeness of any Product Information & Attributes/Diet Types/Claim and you hereby release Sysco and its affiliates for all claims in any way related to the Product Information & Attributes/Diet Types/Claims. Note that if an item is linked to nutrition information from the USDA National Nutrient Database for Standard Reference, ingredients and allergens will not be displayed.

School Equivalents

Portion Size: 1 oz

ID#:

Child Nutrition Label:

Product Formulation Statement:

No
Yes

Mustard - Dijon

DIJON MUSTARD

Nutrition Facts Servings per container: About 51,
Serv. Size: 1 Tsp. (5g), Amount per serving: **Calories 5,**
Total Fat 0g (0% DV), Sodium 120mg (5% DV), Total
Carb. 0g (0% DV), Protein 0g. Not a significant
source of saturated fat, trans fat, cholesterol, dietary fiber,
total sugars, added sugars, vitamin D, calcium, iron
and potassium.

INGREDIENTS: DISTILLED VINEGAR, WATER, MUSTARD SEED,
SALT, WHITE WINE, CITRIC ACID, TARTARIC ACID, SPICES.



REV1521

REFRIGERATE AFTER OPENING

DIST. BY L&S PACKING CO., E. FARMINGDALE, NY 11735
www.goldshorseradish.com



Mustard - yellow

MUSTARD YELLOW PLS JUG

SUPC: 7048836

Nutrition Information	
Serving size	1 Serving (5 grams)
Amount Per Serving	
Calories	0
% Daily Value*	
Total Fat 0g	0%
Saturated Fat 0g	0%
Trans Fat 0g	
Cholesterol 0mg	0%
Sodium 55mg	2%
Total Carbohydrate 0g	0%
Dietary Fiber 0g	0%
Total Sugars 0g	
Includes 0g Added Sugars	0%
Protein 0g	
Vitamin D 0.0mcg	0%
Calcium 0mg	0%
Iron 0.00mg	0%
Potassium 10mg	0%

* The % Daily Value (DV) tells you how much a nutrient in a serving of food contributes to a daily diet. 2000 calories a day is used for general nutrition advice.

Ingredients:

Distilled Vinegar, Water, #1 Grade Mustard Seed, Salt, Turmeric, Paprika, Spice, Natural Flavors & Garlic Powder.

Notes

The nutrition information, ingredients/allergens and attributes/diet types displayed as well as any corresponding claims related thereto, including without limitation, claims regarding the vegetarian, vegan, Kosher, and gluten-free status of a product or item in Sysco eNutrition® (collectively, "Product Information & Attributes/Diet Types/Claims") are provided by product manufacturers and suppliers. Such information may not be complete and/or up to date. You should defer to the product packaging and/or consult with the product manufacturer for complete and current product information. Determination of whether or not a product or item meets the parameters of a specific lifestyle/diet is at your discretion and risk. Sysco and its affiliates do not guarantee the validity, accuracy or completeness of any Product Information & Attributes/Diet Types/Claim and you hereby release Sysco and its affiliates for all claims in any way related to the Product Information & Attributes/Diet Types/Claims. Note that if an item is linked to nutrition information from the USDA National Nutrient Database for Standard Reference, ingredients and allergens will not be displayed.



MUSTARD YELLOW PACKETS

Mustard - yellow - packets

SUPC: 4122594

Nutrition Information	
Serving size	1 Serving (6 grams)
Amount Per Serving	
Calories	0
% Daily Value*	
Total Fat 0g	0%
Saturated Fat 0g	0%
Trans Fat 0g	
Cholesterol 0mg	0%
Sodium 65mg	3%
Total Carbohydrate 0g	0%
Dietary Fiber 0g	0%
Total Sugars 0g	
Includes 0g Added Sugars	0%
Protein 0g	
Vitamin D 0.0mcg	0%
Calcium 0mg	0%
Iron 0.00mg	0%
Potassium 0mg	0%

* The % Daily Value (DV) tells you how much a nutrient in a serving of food contributes to a daily diet. 2000 calories a day is used for general nutrition advice.

Ingredients:

WATER, DISTILLED WHITE VINEGAR, MUSTARD SEED, SALT, TURMERIC, SPICES.

Notes

The nutrition information, ingredients/allergens and attributes/diet types displayed as well as any corresponding claims related thereto, including without limitation, claims regarding the vegetarian, vegan, Kosher, and gluten-free status of a product or item in Sysco eNutrition® (collectively, "Product Information & Attributes/Diet Types/Claims") are provided by product manufacturers and suppliers. Such information may not be complete and/or up to date. You should defer to the product packaging and/or consult with the product manufacturer for complete and current product information. Determination of whether or not a product or item meets the parameters of a specific lifestyle/diet is at your discretion and risk. Sysco and its affiliates do not guarantee the validity, accuracy or completeness of any Product Information & Attributes/Diet Types/Claim and you hereby release Sysco and its affiliates for all claims in any way related to the Product Information & Attributes/Diet Types/Claims. Note that if an item is linked to nutrition information from the USDA National Nutrient Database for Standard Reference, ingredients and allergens will not be displayed.



NECTARINE FRESH

Nectarine

SUPC: 1284157

Nutrition Information	
Serving size	1 NLEA serving (140 grams)
Amount Per Serving	
Calories	60
	% Daily Value*
Total Fat 0g	1%
Saturated Fat 0g	0%
Trans Fat 0g	
Cholesterol 0mg	0%
Sodium 0mg	0%
Total Carbohydrate 15g	5%
Dietary Fiber 2g	9%
Total Sugars 11g	
Includes NA Added Sugars	NA
Protein 1g	
Vitamin D 0mcg	0%
Calcium 8mg	0%
Iron 0.39mg	2%
Potassium 280mg	6%
<small>* The % Daily Value (DV) tells you how much a nutrient in a serving of food contributes to a daily diet. 2000 calories a day is used for general nutrition advice.</small>	

Notes

The nutrition information, ingredients/allergens and attributes/diet types displayed as well as any corresponding claims related thereto, including without limitation, claims regarding the vegetarian, vegan, Kosher, and gluten-free status of a product or item in Sysco eNutrition® (collectively, "Product Information & Attributes/Diet Types/Claims") are provided by product manufacturers and suppliers. Such information may not be complete and/or up to date. You should defer to the product packaging and/or consult with the product manufacturer for complete and current product information. Determination of whether or not a product or item meets the parameters of a specific lifestyle/diet is at your discretion and risk. Sysco and its affiliates do not guarantee the validity, accuracy or completeness of any Product Information & Attributes/Diet Types/Claim and you hereby release Sysco and its affiliates for all claims in any way related to the Product Information & Attributes/Diet Types/Claims. Note that if an item is linked to nutrition information from the USDA National Nutrient Database for Standard Reference, ingredients and allergens will not be displayed.



Nutri-Grain Bar - Apple

BREAKFAST BAR NUTRI-GRN APPLE

SUPC: 5523808

Nutrition Information	
Serving size	1 Bar (37 grams)
Amount Per Serving	
Calories	130
	% Daily Value*
Total Fat 3.5g	4%
Saturated Fat 0.5g	3%
Trans Fat 0g	
Cholesterol 0mg	0%
Sodium 110mg	5%
Total Carbohydrate 25g	9%
Dietary Fiber 2g	7%
Total Sugars 12g	
Includes 11g Added Sugars	22%
Protein 2g	
Vitamin D 2.0mcg	10%
Calcium 130mg	10%
Iron 1.80mg	10%
Potassium 90mg	2%
* The % Daily Value (DV) tells you how much a nutrient in a serving of food contributes to a daily diet. 2000 calories a day is used for general nutrition advice.	

Ingredients:

INGREDIENTS: CRUST: whole grain oats, whole wheat flour, soybean oil, enriched flour (wheat flour, niacin, reduced iron, thiamin mononitrate, riboflavin, folic acid), fructose, sugar, dextrose, calcium carbonate, glycerin, invert sugar, whey, soluble corn fiber, choline bitartrate, cellulose, salt, cinnamon, potassium bicarbonate, natural flavor, vitamin mineral blend (salt, niacinamide, iron, zinc oxide, vitamin D3, vitamin B12, thiamin hydrochloride, pyridoxine hydrochloride, riboflavin), wheat bran, mono- & diglycerides, soy lecithin, wheat gluten, carrageenan, guar gum, FILLING: invert sugar, corn syrup, glycerin, apple puree concentrate, sugar, sodium alginate, modified food starch, sodium citrate, lemon juice concentrate, methylcellulose, citric acid, calcium phosphate, cinnamon.

Contains:

Milk, Soy, Wheat

Notes

The nutrition information, ingredients/allergens and attributes/diet types displayed as well as any corresponding claims related thereto, including without limitation, claims regarding the vegetarian, vegan, Kosher, and gluten-free status of a product or item in Sysco eNutrition® (collectively, "Product Information & Attributes/Diet Types/Claims") are provided by product manufacturers and suppliers. Such information may not be complete and/or up to date. You should defer to the product packaging and/or consult with the product manufacturer for complete and current product information. Determination of whether or not a product or item meets the parameters of a specific lifestyle/diet is at


BREAKFAST BAR NUTRI-GRN BLUBRY
SUPC: 5523816
Nutri-Grain Bar - Blueberry

Nutrition Information	
Serving size	1 Bar (37 grams)
Amount Per Serving	
Calories	130
	% Daily Value*
Total Fat 3.5g	4%
Saturated Fat 0.5g	3%
Trans Fat 0g	
Cholesterol 0mg	0%
Sodium 115mg	5%
Total Carbohydrate 25g	9%
Dietary Fiber 2g	7%
Total Sugars 11g	
Includes 11g Added Sugars	22%
Protein 2g	
Vitamin D 2.0mcg	10%
Calcium 130mg	10%
Iron 1.80mg	10%
Potassium 90mg	2%
* The % Daily Value (DV) tells you how much a nutrient in a serving of food contributes to a daily diet. 2000 calories a day is used for general nutrition advice.	

Ingredients:

INGREDIENTS: CRUST: whole grain oats, whole wheat flour, soybean oil, enriched flour (wheat flour, niacin, reduced iron, thiamin mononitrate, riboflavin, folic acid), fructose, sugar, dextrose, calcium carbonate, glycerin, invert sugar, whey, soluble corn fiber, choline bitartrate, cellulose, salt, potassium bicarbonate, natural flavor, vitamin mineral blend (salt, niacinamide, iron, zinc oxide, vitamin D3, vitamin B12, thiamin hydrochloride, pyridoxine hydrochloride, riboflavin), wheat bran, mono- & diglycerides, soy lecithin, wheat gluten, carrageenan, guar gum, FILLING: invert sugar, corn syrup, glycerin, sugar, blueberry puree concentrate, modified food starch, sodium alginate, natural flavor, citric acid, sodium citrate, vegetable juice (color), methylcellulose, calcium phosphate, lemon juice concentrate, apple juice concentrate.

Contains:

Milk, Soy, Wheat

Notes

The nutrition information, ingredients/allergens and attributes/diet types displayed as well as any corresponding claims related thereto, including without limitation, claims regarding the vegetarian, vegan, Kosher, and gluten-free status of a product or item in Sysco eNutrition® (collectively, "Product Information & Attributes/Diet Types/Claims") are provided by product manufacturers and suppliers. Such information may not be complete and/or up to date. You should defer to the product packaging and/or consult with the product manufacturer for complete and current product


BREAKFAST BAR NUTRI-GRN STWBRY

Nutri-Grain Bar - Strawberry

SUPC: 1400482

Nutrition Information	
Serving size	1 Bar (44 grams)
Amount Per Serving	
Calories	150
	% Daily Value*
Total Fat 3.5g	4%
Saturated Fat 0.5g	3%
Trans Fat 0g	
Cholesterol 0mg	0%
Sodium 140mg	6%
Total Carbohydrate 30g	11%
Dietary Fiber 3g	11%
Total Sugars 12g	
Includes 12g Added Sugars	24%
Protein 2g	
Vitamin D 2.2mcg	10%
Calcium 140mg	10%
Iron 1.90mg	10%
Potassium 110mg	2%
* The % Daily Value (DV) tells you how much a nutrient in a serving of food contributes to a daily diet. 2000 calories a day is used for general nutrition advice.	

Ingredients:

INGREDIENTS: WHOLE WHEAT FLOUR, INVERT SUGAR, CORN SYRUP, WHOLE GRAIN OATS, SOYBEAN OIL, SUGAR, VEGETABLE GLYCERIN, SOLUBLE CORN FIBER, ENRICHED FLOUR (wheat flour, niacin, reduced iron, vitamin B1 [thiamin mononitrate], vitamin B2 [riboflavin], folic acid), DEXTROSE, FRUCTOSE. CONTAINS 2% OR LESS OF calcium carbonate, strawberry puree concentrate, whey, wheat bran, natural flavor, modified food starch, sodium citrate, vegetable juice for color, sodium alginate, cellulose, citric acid, salt, potassium bicarbonate, vitamin blend (salt, niacinamide, vitamin B1 [thiamin hydrochloride], vitamin B6 [pyridoxine hydrochloride], vitamin B2 [riboflavin], vitamin D3, vitamin B12), mono- and diglycerides, dicalcium phosphate, methylcellulose, soy lecithin, lemon juice concentrate, wheat gluten, carrageenan, iron, guar gum.

Contains:

Milk, Soy, Wheat

Notes

The nutrition information, ingredients/allergens and attributes/diet types displayed as well as any corresponding claims related thereto, including without limitation, claims regarding the vegetarian, vegan, Kosher, and gluten-free status of a product or item in Sysco eNutrition® (collectively, "Product Information & Attributes/Diet Types/Claims") are provided by product manufacturers and suppliers. Such information may not be complete and/or up to date. You



Orange Creamsicle

Orange Cream Bar

Orange and Vanilla Naturally and Artificially Flavored Frozen Dairy Snack

Nutrition Facts

1 serving per container
Serving size 1 bar (59g)

Amount per serving
Calories 90

% Daily Value*

Total Fat 1g	1%
Saturated Fat 0.5g	3%
Trans Fat 0g	
Cholesterol <5mg	0%
Sodium 35mg	2%
Total Carbohydrate 21g	8%
Dietary Fiber 0g	0%
Total Sugars 16g	
Includes 13g Added Sugars	26%
Protein 1g	
Vit. D 0mcg 0%	Calcium 38mg 2%
Iron 0mg 0%	Potas. 86mg 2%

The % Daily Value (DV) tells you how much a nutrient in a serving of food contributes to a daily diet. 2,000 calories a day is used for general nutrition advice.



Size: 2.5 FL. OZ (74mL)

UPC: 0-75455-86010-3

Allergens: MILK

Ingredients:

SKIM MILK, WHEY, CANE SUGAR, CORN SYRUP, WATER, MALTODEXTRIN (CORN), BUTTERFAT (CREAM), STABILIZER (MONO & DIGLYCERIDES, GUAR GUM, CAROB BEAN GUM, CARRAGEENAN), NATURAL AND ARTIFICIAL FLAVORS, ANNATTO EXTRACT, TURMERIC EXTRACT, CITRIC ACID.



Orange Ice Cup

ICE ITALIAN ORANGE CUP

SUPC: 2560340

Nutrition Information	
Serving size	1 unit (4 fl. oz.) (118 MLT)
Amount Per Serving	
Calories	90
% Daily Value*	
Total Fat 0g	0%
Saturated Fat 0g	0%
Trans Fat 0g	
Cholesterol 0mg	0%
Sodium 0mg	0%
Total Carbohydrate 22g	8%
Dietary Fiber 0g	0%
Total Sugars 22g	
Includes 22g Added Sugars	44%
Protein 0g	
Vitamin D 0.0mcg	0%
Calcium 20mg	2%
Iron 0.00mg	0%
Potassium 0mg	0%
* The % Daily Value (DV) tells you how much a nutrient in a serving of food contributes to a daily diet. 2000 calories a day is used for general nutrition advice.	

Ingredients:

WATER, SUGAR, ORANGE JUICE FROM CONCENTRATE, CITRIC ACID, ACACIA AND GUAR GUMS, NATURAL FLAVORS, ASCORBIC ACID (VITAMIN C), FD&C YELLOW #6.

Notes

The nutrition information, ingredients/allergens and attributes/diet types displayed as well as any corresponding claims related thereto, including without limitation, claims regarding the vegetarian, vegan, Kosher, and gluten-free status of a product or item in Sysco eNutrition® (collectively, "Product Information & Attributes/Diet Types/Claims") are provided by product manufacturers and suppliers. Such information may not be complete and/or up to date. You should defer to the product packaging and/or consult with the product manufacturer for complete and current product information. Determination of whether or not a product or item meets the parameters of a specific lifestyle/diet is at your discretion and risk. Sysco and its affiliates do not guarantee the validity, accuracy or completeness of any Product Information & Attributes/Diet Types/Claim and you hereby release Sysco and its affiliates for all claims in any way related to the Product Information & Attributes/Diet Types/Claims. Note that if an item is linked to nutrition information from the USDA National Nutrient Database for Standard Reference, ingredients and allergens will not be displayed.



Oranges

ORANGE FANCY FRESH

SUPC: 7651910

Nutrition Information	
Serving size 1 MED Navel Orange (154 grams)	
Amount Per Serving	
Calories	80
% Daily Value*	
Total Fat 0g	0%
Saturated Fat 0g	0%
Trans Fat NA	NA
Cholesterol 0mg	0%
Sodium 0mg	0%
Total Carbohydrate 19g	7%
Dietary Fiber 3g	11%
Total Sugars 14g	
Includes NA Added Sugars	NA
Protein 1g	
Vitamin D NA	NA
Calcium 38mg	2%
Iron 0.36mg	2%
Potassium NA	NA
<small>* The % Daily Value (DV) tells you how much a nutrient in a serving of food contributes to a daily diet. 2000 calories a day is used for general nutrition advice.</small>	

Ingredients:
WHOLE FRESH FANCY ORANGES

Notes

The nutrition information, ingredients/allergens and attributes/diet types displayed as well as any corresponding claims related thereto, including without limitation, claims regarding the vegetarian, vegan, Kosher, and gluten-free status of a product or item in Sysco eNutrition® (collectively, "Product Information & Attributes/Diet Types/Claims") are provided by product manufacturers and suppliers. Such information may not be complete and/or up to date. You should defer to the product packaging and/or consult with the product manufacturer for complete and current product information. Determination of whether or not a product or item meets the parameters of a specific lifestyle/diet is at your discretion and risk. Sysco and its affiliates do not guarantee the validity, accuracy or completeness of any Product Information & Attributes/Diet Types/Claim and you hereby release Sysco and its affiliates for all claims in any way related to the Product Information & Attributes/Diet Types/Claims. Note that if an item is linked to nutrition information from the USDA National Nutrient Database for Standard Reference, ingredients and allergens will not be displayed.



Oreo

COOKIE SANDWICH OREO 5 OZ

SUPC: 4008215

Nutrition Information	
Serving size	3 cookies (34g) (34 grams)
Amount Per Serving	
Calories	160
	% Daily Value*
Total Fat 7g	9%
Saturated Fat 2g	10%
Trans Fat 0g	
Cholesterol 0mg	0%
Sodium 115mg	5%
Total Carbohydrate 25g	9%
Dietary Fiber less than 1g	4%
Total Sugars 14g	
Includes 13g Added Sugars	26%
Protein 1g	
Vitamin D 0mcg	0%
Calcium 10mg	0%
Iron 1.40mg	8%
Potassium 50mg	1%
* The % Daily Value (DV) tells you how much a nutrient in a serving of food contributes to a daily diet. 2000 calories a day is used for general nutrition advice.	

Ingredients:

INGREDIENTS: UNBLEACHED ENRICHED FLOUR (WHEAT FLOUR, NIACIN, REDUCED IRON, THIAMINE MONONITRATE [VITAMIN B1], RIBOFLAVIN [VITAMIN B2], FOLIC ACID), SUGAR, PALM OIL, SOYBEAN AND/OR CANOLA OIL, COCOA (PROCESSED WITH ALKALI), INVERT SUGAR, LEAVENING (BAKING SODA AND/OR CALCIUM PHOSPHATE), SOY LECITHIN, SALT, CHOCOLATE, NATURAL FLAVOR. CONTAINS: WHEAT, SOY.

Contains:

Soy, Wheat

Notes

The nutrition information, ingredients/allergens and attributes/diet types displayed as well as any corresponding claims related thereto, including without limitation, claims regarding the vegetarian, vegan, Kosher, and gluten-free status of a product or item in Sysco eNutrition® (collectively, "Product Information & Attributes/Diet Types/Claims") are provided by product manufacturers and suppliers. Such information may not be complete and/or up to date. You should defer to the product packaging and/or consult with the product manufacturer for complete and current product information. Determination of whether or not a product or item meets the parameters of a specific lifestyle/diet is at your discretion and risk. Sysco and its affiliates do not guarantee the validity, accuracy or completeness of any Product Information & Attributes/Diet Types/Claim and you hereby release Sysco and its affiliates for all claims in any way related to the Product Information & Attributes/Diet Types/Claims. Note that if an item is linked to nutrition information from the USDA National Nutrient Database for Standard Reference, ingredients and allergens will not be displayed.



0 Reo

COOKIE SANDWICH OREO

SUPC: 7662265

Nutrition Information	
Serving size	1 pack (22g) (22 grams)
Amount Per Serving	
Calories	110
% Daily Value*	
Total Fat NA	NA
Saturated Fat 1.5g	8%
Trans Fat 0g	
Cholesterol 0mg	0%
Sodium 85mg	4%
Total Carbohydrate 16g	6%
Dietary Fiber 0g	0%
Total Sugars NA	NA
Includes 9g Added Sugars	18%
Protein less than 1g	
Vitamin D NA	NA
Calcium 10mg	0%
Iron 0.90mg	6%
Potassium 30mg	1%
* The % Daily Value (DV) tells you how much a nutrient in a serving of food contributes to a daily diet. 2000 calories a day is used for general nutrition advice.	

Ingredients:

INGREDIENTS: UNBLEACHED ENRICHED FLOUR (WHEAT FLOUR, NIACIN, REDUCED IRON, THIAMINE MONONITRATE [VITAMIN B1], RIBOFLAVIN [VITAMIN B2], FOLIC ACID), SUGAR, PALM OIL, SOYBEAN AND/OR CANOLA OIL, COCOA (PROCESSED WITH ALKALI), HIGH FRUCTOSE CORN SYRUP, LEAVENING (BAKING SODA, CALCIUM PHOSPHATE), SALT, SOY LECITHIN, CHOCOLATE, ARTIFICIAL FLAVOR. CONTAINS: WHEAT, SOY.

Contains:

Soy, Wheat

Notes

The nutrition information, ingredients/allergens and attributes/diet types displayed as well as any corresponding claims related thereto, including without limitation, claims regarding the vegetarian, vegan, Kosher, and gluten-free status of a product or item in Sysco eNutrition® (collectively, "Product Information & Attributes/Diet Types/Claims") are provided by product manufacturers and suppliers. Such information may not be complete and/or up to date. You should defer to the product packaging and/or consult with the product manufacturer for complete and current product information. Determination of whether or not a product or item meets the parameters of a specific lifestyle/diet is at your discretion and risk. Sysco and its affiliates do not guarantee the validity, accuracy or completeness of any Product Information & Attributes/Diet Types/Claim and you hereby release Sysco and its affiliates for all claims in any way related to the Product Information & Attributes/Diet Types/Claims. Note that if an item is linked to nutrition information from the USDA National Nutrient Database for Standard Reference, ingredients and allergens will not be displayed.

Cheese Parmesan Grated Fresh Domestic

Customer Name: TALL PINES DAY CAMP

Account Number: 138396

2/5LB 4066781



Ingredients

Parmesan Cheese: (Pasteurized Part-Skim Cow's Milk, Cheese Cultures, Salt, Enzymes), Powdered Cellulose added to prevent caking, Natamycin (A Natural Mold Inhibitor).
CONTAINS: MILK.

Nutrition Facts

2 tsp Servings per container

Serving Size **2 tsp (5g)**

Amount per Serving

Calories 20

% Daily Value*

Total Fat 1.5g 2%

Saturated Fat 1g **5%**

Trans Fat

Cholesterol less than 2%

Sodium 65mg 3%

Total Carbohydrate 0g 0%

Dietary Fiber 0g **0%**

Total Sugars

Includes 0g Added Sugars **0%**

Protein 2g 4%

Vitamin D 0mcg 0%

Calcium 49mg 4%

Iron 0.00mg 0%

Potassium 0mg 0%

* The % Daily Value (DV) tells you how much a nutrient in a serving of food contributes to a daily diet. 2,000 calories a day is used for general nutrition advice.



Pasta Salad

SALAD PASTA ITALIAN

SUPC: 1527597

Nutrition Information	
Serving size	2/3 Cup (100 grams)
Amount Per Serving	
Calories	260
% Daily Value*	
Total Fat 2.5g	3%
Saturated Fat 0.5g	3%
Trans Fat 0g	
Cholesterol 0mg	0%
Sodium 900mg	39%
Total Carbohydrate 51g	19%
Dietary Fiber 2g	7%
Total Sugars 5g	
Includes 2g Added Sugars	4%
Protein 9g	
Vitamin D 0.0mcg	0%
Calcium 43mg	4%
Iron 3.00mg	15%
Potassium 80mg	2%
* The % Daily Value (DV) tells you how much a nutrient in a serving of food contributes to a daily diet. 2000 calories a day is used for general nutrition advice.	

Ingredients:

LITE ITALIAN DRESSING (Water, Distilled Vinegar, Sugar, Salt, Soybean Oil, Xanthan Gum, Dehydrated Garlic and Onion, Dehydrated Bell Pepper, Sodium Benzoate and Potassium Sorbate (Preservatives), Spice, Calcium Disodium EDTA to protect flavor, Spice Extractives, FD&C Yellow #5 and Yellow #6), SPINACH PASTA (Semolina, Dried Spinach, Niacin, Ferrous Sulfate, Thiamin Mononitrate, Riboflavin, and Folic Acid), MACARONI PASTA (Semolina (Wheat), Niacin, Iron (Ferrous Sulfate), Thiamin Mononitrate, Riboflavin, and Folic Acid), WATER, CELERY, BLACK OLIVES (Sliced Ripe Olives, Water, Salt, and Ferrous Gluconate added to stabilize color), PIMENTOS (Pimentos, Water, Citric Acid), PARMESAN CHEESE (Pasteurized Part Skim-Milk, Cheese Cultures, Salt, Enzymes, and Powdered Cellulose (Anti-caking Agent)), DEHYDRATED ONION, XANTHAN GUM, POTASSIUM SORBATE (Preservative), SODIUM BENZOATE (Preservative), SALT. CONTAINS: Wheat, Milk

Contains:

Milk, Wheat

Notes

The nutrition information, ingredients/allergens and attributes/diet types displayed as well as any corresponding claims related thereto, including without limitation, claims regarding the vegetarian, vegan, Kosher, and gluten-free



SALAD PASTA TORTELLINI CHEESE

SUPC: 3927738

Pasta Salad - Tortellini

Nutrition Information	
Serving size	3/4 cup (140 grams)
Amount Per Serving	
Calories	380
% Daily Value*	
Total Fat 24g	31%
Saturated Fat 2.5g	13%
Trans Fat 0.5g	
Cholesterol less than 5mg	2%
Sodium 1250mg	54%
Total Carbohydrate 37g	13%
Dietary Fiber 2g	7%
Total Sugars 2g	
Includes 2g Added Sugars	4%
Protein 6g	
Vitamin D 0mcg	0%
Calcium 60mg	4%
Iron 2.60mg	15%
Potassium 180mg	4%
* The % Daily Value (DV) tells you how much a nutrient in a serving of food contributes to a daily diet. 2000 calories a day is used for general nutrition advice.	

Ingredients:

Tortellini Pasta (Enriched Durum Wheat Flour [Wheat Flour, Niacin, Ferrous Sulfate, Iron, Thiamin Mononitrate, Riboflavin, Folic Acid], Dakota Champion Flour [Malted Barley Flour], Water, Eggs, Non-GMO Canola Oil, Salt, Turmeric, Spinach Powder, Oleoresin Paprika [Paprika Extract, Refined Sunflower Oil], Cracker Meal [Unbleached Wheat Flour], Part Skim Ricotta Cheese [Pasteurized Whole Milk, Skim Milk, Cream, Starter, Salt], Imported Pecorino Romano Cheese [Sheep's Milk, Cultures, Salt, Rennet, Starch and Powdered Cellulose to Prevent Caking]), Canola Oil, Roasted Red Peppers (Red Peppers, Water, Salt, Citric Acid), Water, Apple Cider Vinegar (Made from the Juice of Apples, Diluted with Water to 5% Acidity), Black Olives (Olives, Water, Salt, Ferrous Gluconate [To Stabilize Color]), Contains 2% or less of each: Sugar, Vinegar Powder, Garlic (Garlic, Water), Corn Starch, Spices, Salt, Cultured Dextrose (Cultured Dextrose, Maltodextrin). Contains: Wheat, Milk, Sheep Milk, Eggs.

Contains:

Eggs, Milk, Wheat

Notes

The nutrition information, ingredients/allergens and attributes/diet types displayed as well as any corresponding claims related thereto, including without limitation, claims regarding the vegetarian, vegan, Kosher, and gluten-free



Peaches in juice

PEACH YC DICED CH PEAR JUICE

SUPC: 4987343

Nutrition Information	
Serving size	1/2 Cup (124 grams)
Amount Per Serving	
Calories	50
% Daily Value*	
Total Fat 0g	0%
Saturated Fat 0g	0%
Trans Fat 0g	
Cholesterol 0mg	0%
Sodium 0mg	0%
Total Carbohydrate 12g	4%
Dietary Fiber 1g	4%
Total Sugars 10g	
Includes 0g Added Sugars	0%
Protein 1g	
Vitamin D 0mcg	0%
Calcium 9mg	0%
Iron 0mg	0%
Potassium 210mg	4%
* The % Daily Value (DV) tells you how much a nutrient in a serving of food contributes to a daily diet. 2000 calories a day is used for general nutrition advice.	

Ingredients:

Peaches, Water, Pear Juice from Concentrate

Notes

The nutrition information, ingredients/allergens and attributes/diet types displayed as well as any corresponding claims related thereto, including without limitation, claims regarding the vegetarian, vegan, Kosher, and gluten-free status of a product or item in Sysco eNutrition® (collectively, "Product Information & Attributes/Diet Types/Claims") are provided by product manufacturers and suppliers. Such information may not be complete and/or up to date. You should defer to the product packaging and/or consult with the product manufacturer for complete and current product information. Determination of whether or not a product or item meets the parameters of a specific lifestyle/diet is at your discretion and risk. Sysco and its affiliates do not guarantee the validity, accuracy or completeness of any Product Information & Attributes/Diet Types/Claim and you hereby release Sysco and its affiliates for all claims in any way related to the Product Information & Attributes/Diet Types/Claims. Note that if an item is linked to nutrition information from the USDA National Nutrient Database for Standard Reference, ingredients and allergens will not be displayed.



PEACH SLICED CH EXTRA LS

SUPC: 2182063

Peaches - Sliced

Nutrition Information	
Serving size	1/2 Cup (124 grams)
Amount Per Serving	
Calories	60
% Daily Value*	
Total Fat 0g	0%
Saturated Fat 0g	0%
Trans Fat 0g	
Cholesterol 0mg	0%
Sodium 0mg	0%
Total Carbohydrate 16g	6%
Dietary Fiber 1g	4%
Total Sugars 15g	
Includes 7g Added Sugars	14%
Protein 1g	
Vitamin D 0mcg	0%
Calcium 1mg	0%
Iron 0mg	0%
Potassium 80mg	2%
* The % Daily Value (DV) tells you how much a nutrient in a serving of food contributes to a daily diet. 2000 calories a day is used for general nutrition advice.	

Ingredients:

Peaches, Water, Sugar.

Notes

The nutrition information, ingredients/allergens and attributes/diet types displayed as well as any corresponding claims related thereto, including without limitation, claims regarding the vegetarian, vegan, Kosher, and gluten-free status of a product or item in Sysco eNutrition® (collectively, "Product Information & Attributes/Diet Types/Claims") are provided by product manufacturers and suppliers. Such information may not be complete and/or up to date. You should defer to the product packaging and/or consult with the product manufacturer for complete and current product information. Determination of whether or not a product or item meets the parameters of a specific lifestyle/diet is at your discretion and risk. Sysco and its affiliates do not guarantee the validity, accuracy or completeness of any Product Information & Attributes/Diet Types/Claim and you hereby release Sysco and its affiliates for all claims in any way related to the Product Information & Attributes/Diet Types/Claims. Note that if an item is linked to nutrition information from the USDA National Nutrient Database for Standard Reference, ingredients and allergens will not be displayed.



Pepper

SPICE PEPPER BLK TABLE GRND ME

SUPC: 6639827

Nutrition Information	
Serving size	1/4 Teaspoon (1 grams)
Amount Per Serving	
Calories	0
% Daily Value*	
Total Fat 0g	0%
Saturated Fat 0g	0%
Trans Fat 0g	
Cholesterol 0mg	0%
Sodium 0mg	0%
Total Carbohydrate 0g	0%
Dietary Fiber 0g	0%
Total Sugars 0g	
Includes 0g Added Sugars	0%
Protein 0g	
Vitamin D 0.0mcg	0%
Calcium 0mg	0%
Iron 0.00mg	0%
Potassium 10mg	0%
* The % Daily Value (DV) tells you how much a nutrient in a serving of food contributes to a daily diet. 2000 calories a day is used for general nutrition advice.	

Ingredients:

BLACK PEPPER

Notes

The nutrition information, ingredients/allergens and attributes/diet types displayed as well as any corresponding claims related thereto, including without limitation, claims regarding the vegetarian, vegan, Kosher, and gluten-free status of a product or item in Sysco eNutrition® (collectively, "Product Information & Attributes/Diet Types/Claims") are provided by product manufacturers and suppliers. Such information may not be complete and/or up to date. You should defer to the product packaging and/or consult with the product manufacturer for complete and current product information. Determination of whether or not a product or item meets the parameters of a specific lifestyle/diet is at your discretion and risk. Sysco and its affiliates do not guarantee the validity, accuracy or completeness of any Product Information & Attributes/Diet Types/Claim and you hereby release Sysco and its affiliates for all claims in any way related to the Product Information & Attributes/Diet Types/Claims. Note that if an item is linked to nutrition information from the USDA National Nutrient Database for Standard Reference, ingredients and allergens will not be displayed.


PEPPERONI SLICED PORK&BF14-16C
SUPC: 2544831
Pepperoni - Slices

Nutrition Information	
Serving size	15 slices (30 grams)
Amount Per Serving	
Calories	150
	% Daily Value*
Total Fat 14g	18%
Saturated Fat 5g	25%
Trans Fat 0g	
Cholesterol 30mg	10%
Sodium 540mg	23%
Total Carbohydrate 0g	0%
Dietary Fiber 0g	0%
Total Sugars 0g	
Includes 0g Added Sugars	0%
Protein 6g	
Vitamin D 0mcg	0%
Calcium 12mg	0%
Iron 1.00mg	6%
Potassium 100mg	2%
* The % Daily Value (DV) tells you how much a nutrient in a serving of food contributes to a daily diet. 2000 calories a day is used for general nutrition advice.	

Ingredients:

PORK AND BEEF, salt, spices, dextrose, lactic acid starter culture, oleoresin of paprika, flavoring, sodium nitrite, BHA, BHT, citric acid.

Notes

The nutrition information, ingredients/allergens and attributes/diet types displayed as well as any corresponding claims related thereto, including without limitation, claims regarding the vegetarian, vegan, Kosher, and gluten-free status of a product or item in Sysco eNutrition® (collectively, "Product Information & Attributes/Diet Types/Claims") are provided by product manufacturers and suppliers. Such information may not be complete and/or up to date. You should defer to the product packaging and/or consult with the product manufacturer for complete and current product information. Determination of whether or not a product or item meets the parameters of a specific lifestyle/diet is at your discretion and risk. Sysco and its affiliates do not guarantee the validity, accuracy or completeness of any Product Information & Attributes/Diet Types/Claim and you hereby release Sysco and its affiliates for all claims in any way related to the Product Information & Attributes/Diet Types/Claims. Note that if an item is linked to nutrition information from the USDA National Nutrient Database for Standard Reference, ingredients and allergens will not be displayed.



Pickles - Kasher Dill

PICKLE DILL KOSHER FRDM CHIP

SUPC: 7029690

Nutrition Information	
Serving size	Chips (28 grams)
Amount Per Serving	
Calories	5
	% Daily Value*
Total Fat 0g	0%
Saturated Fat 0g	0%
Trans Fat 0g	
Cholesterol 0mg	0%
Sodium 210mg	9%
Total Carbohydrate 1g	0%
Dietary Fiber 0g	0%
Total Sugars 0g	
Includes 0g Added Sugars	0%
Protein 0g	
Vitamin D 0mcg	0%
Calcium 23mg	2%
Iron 0mg	0%
Potassium 30mg	1%

* The % Daily Value (DV) tells you how much a nutrient in a serving of food contributes to a daily diet. 2000 calories a day is used for general nutrition advice.

Ingredients:

FRESH CUCUMBERS, WATER, SALT, VINEGAR, GARLIC, SPICES, CALCIUM CHLORIDE (FIRMING AGENT), 1/10 OF 1% SODIUM BENZOATE (PRESERVATIVE), NATURAL FLAVORS, EDTA (COLOR RETAINER), TURMERIC.

Free From:

Crustaceans, Eggs, Fish, Milk, Peanuts, Soy, Tree Nuts, Wheat

Notes

The nutrition information, ingredients/allergens and attributes/diet types displayed as well as any corresponding claims related thereto, including without limitation, claims regarding the vegetarian, vegan, Kosher, and gluten-free status of a product or item in Sysco eNutrition® (collectively, "Product Information & Attributes/Diet Types/Claims") are provided by product manufacturers and suppliers. Such information may not be complete and/or up to date. You should defer to the product packaging and/or consult with the product manufacturer for complete and current product information. Determination of whether or not a product or item meets the parameters of a specific lifestyle/diet is at your discretion and risk. Sysco and its affiliates do not guarantee the validity, accuracy or completeness of any Product Information & Attributes/Diet Types/Claim and you hereby release Sysco and its affiliates for all claims in any way related to the Product Information & Attributes/Diet Types/Claims. Note that if an item is linked to nutrition information from the USDA National Nutrient Database for Standard Reference, ingredients and allergens will not be displayed.



Pink Lemonade

SEA BREEZE
441 Main Road
Towaco, NJ 07082
Phone: (973)334-7777
Fax: (973)334-2617
www.seabreezesyrups.com

Pink Lemonade 1+5 Beverage Concentrate

When reconstituted, 2 fl. oz. concentrate yields a 12 fl. oz. beverage

3 Gallon BIB:

Nutrition Facts	
192 servings per container	
Serving size 12 fl. oz. (355 mL)	
Amount per serving	
Calories	170
	% Daily Value*
Total Fat 0g	0%
Saturated Fat 0g	0%
Trans Fat 0g	
Cholesterol 0mg	0%
Sodium 15mg	1%
Total Carbohydrate 41g	15%
Dietary Fiber 0g	0%
Total Sugars 38g	
Includes 38g Added Sugars	76%
Protein 0g	
Vitamin D 0mcg	0%
Calcium 1mg	0%
Iron 0mg	0%
Potassium 0mg	0%
Vitamin C 1mg	2%
<small>*The % Daily Value tells you how much a nutrient in a serving of food contributes to a daily diet. 2,000 calories a day is used for general nutrition advice.</small>	

INGREDIENTS: High Fructose Corn Syrup, Water, Citric Acid, Lemon Juice Concentrate, Natural and Artificial Flavors, Sodium Benzoate (Preservative), Gum Acacia, Ester Gum, FD&C Red #40, FD&C Yellow #5.



Pizza Cheese

PIZZA CHEESE SCRATCH RDY 16"

SUPC: 0223061

Nutrition Information	
Serving size	1 Serving (149 grams)
Amount Per Serving	
Calories	370
% Daily Value*	
Total Fat 11g	14%
Saturated Fat 6g	30%
Trans Fat 0g	
Cholesterol 25mg	8%
Sodium 540mg	23%
Total Carbohydrate 53g	19%
Dietary Fiber 2g	7%
Total Sugars 8g	
Includes 1g Added Sugars	2%
Protein 15g	
Vitamin D 0mcg	0%
Calcium 200mg	15%
Iron 3.10mg	15%
Potassium 410mg	9%
* The % Daily Value (DV) tells you how much a nutrient in a serving of food contributes to a daily diet. 2000 calories a day is used for general nutrition advice.	

Ingredients:

INGREDIENTS: ENRICHED FLOUR (WHEAT FLOUR, MALTED BARLEY FLOUR, NIACIN, REDUCED IRON, THIAMINE MONONITRATE, RIBOFLAVIN, FOLIC ACID), WATER, LOW MOISTURE PART SKIM MOZZARELLA AND PARMESAN CHEESES (PART SKIM MILK, CHEESE CULTURES, SALT, ENZYMES), TOMATO PASTE, YEAST, DEGERMED YELLOW CORNMEAL, CONTAINS 2% OR LESS OF: VEGETABLE OIL (PALM, SOYBEAN AND/OR CANOLA OIL), SUGAR, SEA SALT, HYDROGENATED SOYBEAN OIL, SALT, DOUGH CONDITIONER (ENZYMES, CONTAINS ONE OR MORE OF THE FOLLOWING: DATEM, CALCIUM CARBONATE, WHEAT GLUTEN, GUAR GUM, ASCORBIC ACID), MODIFIED FOOD STARCH, DEXTROSE, MALTODEXTRIN, SPICE, PAPRIKA, DRIED GARLIC, CITRIC ACID, SOY LECITHIN, DRIED ONION, NATURAL FLAVOR, WHEAT STARCH.

Contains:

Milk, Soy, Wheat

Free From:

Crustaceans, Eggs, Fish, Peanuts, Sesame seeds, Tree Nuts

Notes

The nutrition information, ingredients/allergens and attributes/diet types displayed as well as any corresponding



Pizza Dough

DOUGH BALL PIZZA IW 19OZ

SUPC: 4857330

Nutrition Information	
Serving size	2 Ounces (57 grams)
Amount Per Serving	
Calories	140
% Daily Value*	
Total Fat 2g	3%
Saturated Fat 0g	0%
Trans Fat 0g	
Cholesterol 0mg	0%
Sodium 140mg	6%
Total Carbohydrate 26g	9%
Dietary Fiber 1g	4%
Total Sugars 1g	
Includes less than 1g	Added Sugars 1%
Protein 5g	
Vitamin D 0mcg	0%
Calcium 0mg	0%
Iron 1.70mg	10%
Potassium 0mg	0%

* The % Daily Value (DV) tells you how much a nutrient in a serving of food contributes to a daily diet. 2000 calories a day is used for general nutrition advice.

Ingredients:

ENRICHED FLOUR BLEACHED (WHEAT FLOUR, MALTED BARLEY FLOUR, NIACIN, IRON, THIAMIN MONONITRATE, RIBOFLAVIN, FOLIC ACID), WATER, SOYBEAN OIL. CONTAINS 2% OR LESS OF: YEAST, SUGAR, SALT, VITAL WHEAT GLUTEN, DOUGH CONDITIONERS (SODIUM STEAROYL LACTYLATE, ASCORBIC ACID, ENZYMES, L-CYSTEINE). CONTAINS: WHEAT

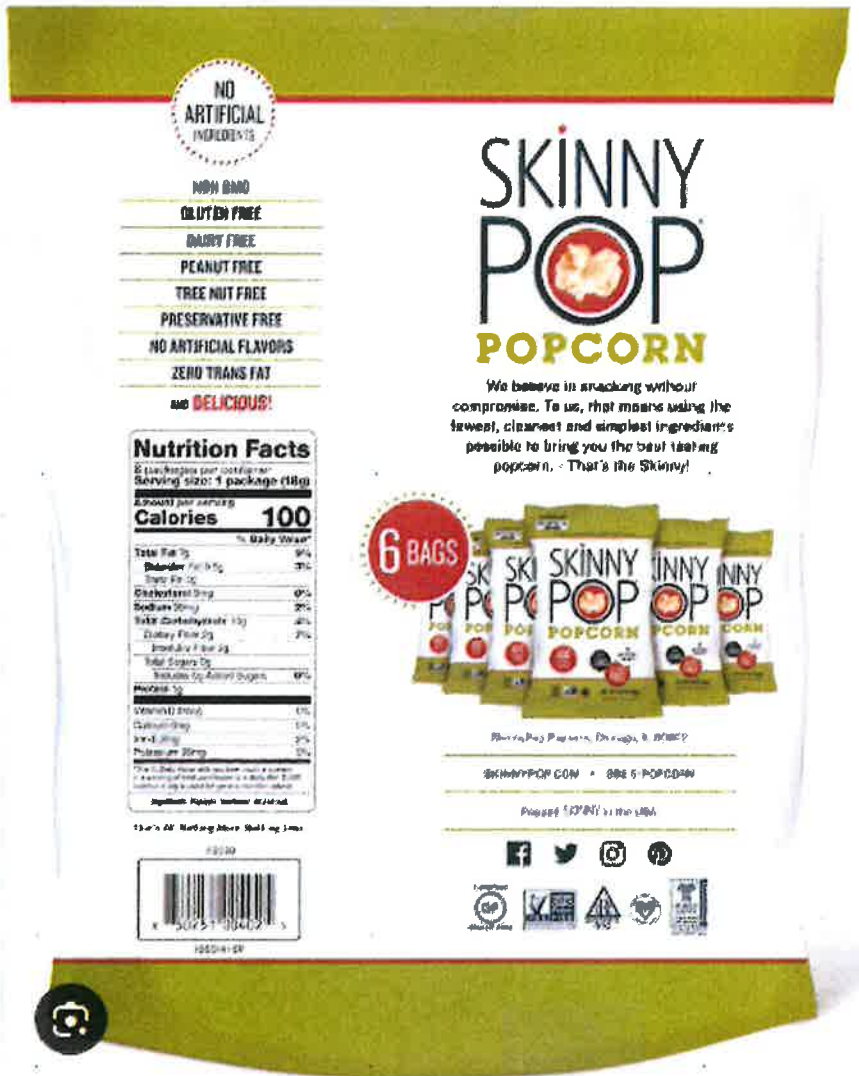
Contains:

Wheat

Notes

The nutrition information, ingredients/allergens and attributes/diet types displayed as well as any corresponding claims related thereto, including without limitation, claims regarding the vegetarian, vegan, Kosher, and gluten-free status of a product or item in Sysco eNutrition® (collectively, "Product Information & Attributes/Diet Types/Claims") are provided by product manufacturers and suppliers. Such information may not be complete and/or up to date. You should defer to the product packaging and/or consult with the product manufacturer for complete and current product information. Determination of whether or not a product or item meets the parameters of a specific lifestyle/diet is at your discretion and risk. Sysco and its affiliates do not guarantee the validity, accuracy or completeness of any Product Information & Attributes/Diet Types/Claim and you hereby release Sysco and its affiliates for all claims in any way related to the Product Information & Attributes/Diet Types/Claims. Note that if an item is linked to nutrition information from the USDA National Nutrient Database for Standard Reference, ingredients and allergens will not be displayed.

Popcorn



PopSicle



Nutrition Facts

6 servings per container

Serving size

3 pops (148g)

	Per Serving	Per Pop
Calories	110	35
	% DV*	% DV*
Total Fat	0g 0%	0g 0%
Sodium	0mg 0%	0mg 0%
Total Carbohydrate	28g 10%	9g 3%
Total Sugars	24g	8g
Incl. Added Sugars	24g 48%	8g 16%
Protein	0g	0g
Vitamin C	30%	10%

Not a significant source of saturated fat, trans fat, cholesterol, dietary fiber, vitamin D, calcium, iron and potassium.

*% DV = % Daily Value



Pop Tart - Cinnamon

POP TART FR CINN WHL GRN 1CT

SUPC: 0445088

Nutrition Information	
Serving size	1 Pastry (48 grams)
Amount Per Serving	
Calories	170
	% Daily Value*
Total Fat 3g	4%
Saturated Fat 1g	5%
Trans Fat 0g	
Cholesterol 0mg	0%
Sodium 120mg	5%
Total Carbohydrate 37g	13%
Dietary Fiber 3g	11%
Total Sugars 15g	
Includes 15g Added Sugars	30%
Protein 2g	
Vitamin D 0mcg	0%
Calcium 130mg	10%
Iron 1.80mg	10%
Potassium 70mg	1%

* The % Daily Value (DV) tells you how much a nutrient in a serving of food contributes to a daily diet. 2000 calories a day is used for general nutrition advice.

Ingredients:

INGREDIENTS: WHOLE WHEAT FLOUR, SUGAR, ENRICHED FLOUR (wheat flour, niacin, reduced iron, vitamin B1 [thiamin mononitrate], vitamin B2 [riboflavin], folic acid), CORN SYRUP, DEXTROSE, SOYBEAN AND PALM OIL, BLEACHED WHEAT FLOUR, POLYDEXTROSE, GLYCERIN. CONTAINS 2% OR LESS OF maltodextrin, molasses, calcium carbonate, leavening (sodium acid pyrophosphate, baking soda), wheat starch, salt, cinnamon, sodium stearoyl lactylate, DATEM, gelatin, xanthan gum, niacinamide, reduced iron, vitamin A palmitate, vitamin B6 (pyridoxine hydrochloride), vitamin B2 (riboflavin), vitamin B1 (thiamin hydrochloride), soy lecithin.

Contains:

Soy, Wheat

Notes

The nutrition information, ingredients/allergens and attributes/diet types displayed as well as any corresponding claims related thereto, including without limitation, claims regarding the vegetarian, vegan, Kosher, and gluten-free status of a product or item in Sysco eNutrition® (collectively, "Product Information & Attributes/Diet Types/Claims") are provided by product manufacturers and suppliers. Such information may not be complete and/or up to date. You should defer to the product packaging and/or consult with the product manufacturer for complete and current product information. Determination of whether or not a product or item meets the parameters of a specific lifestyle/diet is at your discretion and risk. Sysco and its affiliates do not guarantee the validity, accuracy or completeness of any Product Information & Attributes/Diet Types/Claim and you hereby release Sysco and its affiliates for all claims in any way



CHIP POTATO RIDGED ORIG SS

Potato Chips

SUPC: 5527403

Nutrition Information	
Serving size	By serving (28 grams)
Amount Per Serving	
Calories	160
% Daily Value*	
Total Fat 10g	13%
Saturated Fat 1.5g	8%
Trans Fat 0g	
Cholesterol 0mg	0%
Sodium 140mg	6%
Total Carbohydrate 15g	5%
Dietary Fiber 1g	4%
Total Sugars less than 1g	
Includes NA Added Sugars	NA
Protein 2g	
Vitamin D 0mcg	0%
Calcium 10mg	0%
Iron 0.60mg	4%
Potassium 350mg	7%
<small>* The % Daily Value (DV) tells you how much a nutrient in a serving of food contributes to a daily diet. 2000 calories a day is used for general nutrition advice.</small>	

Ingredients:

Potatoes, Vegetable Oil (Canola, Corn, Soybean, And/Or Sunflower Oil), And Salt

Notes

The nutrition information, ingredients/allergens and attributes/diet types displayed as well as any corresponding claims related thereto, including without limitation, claims regarding the vegetarian, vegan, Kosher, and gluten-free status of a product or item in Sysco eNutrition® (collectively, "Product Information & Attributes/Diet Types/Claims") are provided by product manufacturers and suppliers. Such information may not be complete and/or up to date. You should defer to the product packaging and/or consult with the product manufacturer for complete and current product information. Determination of whether or not a product or item meets the parameters of a specific lifestyle/diet is at your discretion and risk. Sysco and its affiliates do not guarantee the validity, accuracy or completeness of any Product Information & Attributes/Diet Types/Claim and you hereby release Sysco and its affiliates for all claims in any way related to the Product Information & Attributes/Diet Types/Claims. Note that if an item is linked to nutrition information from the USDA National Nutrient Database for Standard Reference, ingredients and allergens will not be displayed.



SALAD POTATO REGULAR

Potato Salad

SUPC: 1034594

Nutrition Information	
Serving size	1/2 cup (140 grams)
Amount Per Serving	
Calories	200
% Daily Value*	
Total Fat 12g	15%
Saturated Fat 2g	10%
Trans Fat 0g	
Cholesterol 10mg	3%
Sodium 560mg	24%
Total Carbohydrate 21g	8%
Dietary Fiber 2g	7%
Total Sugars 7g	
Includes 7g Added Sugars	14%
Protein 3g	
Vitamin D 0.5mcg	2%
Calcium 10mg	0%
Iron 0.50mg	2%
Potassium 300mg	6%
* The % Daily Value (DV) tells you how much a nutrient in a serving of food contributes to a daily diet. 2000 calories a day is used for general nutrition advice.	

Ingredients:

POTATOES, MAYONNAISE (SOYBEAN OIL, WATER, EGG YOLKS, VINEGAR, SALT), SUGAR, CELERY, WATER, SWEET PICKLE RELISH (CUCUMBER, SUGAR, DISTILLED VINEGAR, SALT, CALCIUM CHLORIDE, MUSTARD SEED, XANTHAN GUM, CELERY SEED, DEHYDRATED RED BELL PEPPER, NATURAL FLAVORS, TURMERIC, MINCED ONION), MUSTARD (WATER, VINEGAR, MUSTARD SEED, SALT, SUGAR, TURMERIC, PAPRIKA, GARLIC POWDER, SPICES, XANTHAN GUM, ANNATTO EXTRACT COLOR, NATURAL FLAVOR, CITRIC ACID), ONION, VINEGAR, RED BELL PEPPER, SALT, MODIFIED CORN STARCH, NATURAL FLAVOR, SODIUM BENZOATE (PRESERVATIVE), POTASSIUM SORBATE (PRESERVATIVE), XANTHAN GUM, ANNATTO EXTRACT (COLOR)

Contains:

Eggs

Notes

The nutrition information, ingredients/allergens and attributes/diet types displayed as well as any corresponding claims related thereto, including without limitation, claims regarding the vegetarian, vegan, Kosher, and gluten-free status of a product or item in Sysco eNutrition® (collectively, "Product Information & Attributes/Diet Types/Claims") are provided by product manufacturers and suppliers. Such information may not be complete and/or up to date. You should defer to the product packaging and/or consult with the product manufacturer for complete and current product



Pretzels

PRETZEL TINY TWIST

SUPC: 2883049

Nutrition Information	
Serving size	By Serving (14 grams)
Amount Per Serving	
Calories	60
	% Daily Value*
Total Fat 0.5g	1%
Saturated Fat 0g	0%
Trans Fat 0g	
Cholesterol 0mg	0%
Sodium 180mg	8%
Total Carbohydrate 11g	4%
Dietary Fiber 0g	0%
Total Sugars 0g	
Includes 0g Added Sugars	0%
Protein 1g	
Vitamin D 0mcg	0%
Calcium 0mg	0%
Iron 1.10mg	6%
Potassium 20mg	0%
* The % Daily Value (DV) tells you how much a nutrient in a serving of food contributes to a daily diet. 2000 calories a day is used for general nutrition advice.	

Ingredients:

Enriched Flour (Wheat Flour, Niacin, Reduced Iron, Thiamin Mononitrate, Riboflavin, Folic Acid), Corn Oil, Corn Syrup, Salt, Ammonium Bicarbonate, Yeast, And Malt Extract. CONTAINS WHEAT INGREDIENTS.

Contains:

Wheat

Notes

The nutrition information, ingredients/allergens and attributes/diet types displayed as well as any corresponding claims related thereto, including without limitation, claims regarding the vegetarian, vegan, Kosher, and gluten-free status of a product or item in Sysco eNutrition® (collectively, "Product Information & Attributes/Diet Types/Claims") are provided by product manufacturers and suppliers. Such information may not be complete and/or up to date. You should defer to the product packaging and/or consult with the product manufacturer for complete and current product information. Determination of whether or not a product or item meets the parameters of a specific lifestyle/diet is at your discretion and risk. Sysco and its affiliates do not guarantee the validity, accuracy or completeness of any Product Information & Attributes/Diet Types/Claim and you hereby release Sysco and its affiliates for all claims in any way related to the Product Information & Attributes/Diet Types/Claims. Note that if an item is linked to nutrition information from the USDA National Nutrient Database for Standard Reference, ingredients and allergens will not be displayed.



Pretzels

PRETZEL TINY TWIST CLS SS

SUPC: 8083164

Nutrition Information	
Serving size	By Serving (28 grams)
Amount Per Serving	
Calories	120
	% Daily Value*
Total Fat 1g	1%
Saturated Fat 0g	0%
Trans Fat 0g	
Cholesterol 0mg	0%
Sodium 370mg	16%
Total Carbohydrate 23g	8%
Dietary Fiber less than 1g	4%
Total Sugars less than 1g	
Includes NA Added Sugars	NA
Protein 3g	
Vitamin D 0mcg	0%
Calcium 10mg	0%
Iron 2.10mg	10%
Potassium 30mg	1%
* The % Daily Value (DV) tells you how much a nutrient in a serving of food contributes to a daily diet. 2000 calories a day is used for general nutrition advice.	

Ingredients:

Enriched Flour (Wheat Flour, Niacin, Reduced Iron, Thiamin Mononitrate, Riboflavin, Folic Acid), Corn Oil, Corn Syrup, Salt, Ammonium Bicarbonate, Yeast, And Malt Extract. CONTAINS WHEAT INGREDIENTS.

Contains:

Wheat

Notes

The nutrition information, ingredients/allergens and attributes/diet types displayed as well as any corresponding claims related thereto, including without limitation, claims regarding the vegetarian, vegan, Kosher, and gluten-free status of a product or item in Sysco eNutrition® (collectively, "Product Information & Attributes/Diet Types/Claims") are provided by product manufacturers and suppliers. Such information may not be complete and/or up to date. You should defer to the product packaging and/or consult with the product manufacturer for complete and current product information. Determination of whether or not a product or item meets the parameters of a specific lifestyle/diet is at your discretion and risk. Sysco and its affiliates do not guarantee the validity, accuracy or completeness of any Product Information & Attributes/Diet Types/Claim and you hereby release Sysco and its affiliates for all claims in any way related to the Product Information & Attributes/Diet Types/Claims. Note that if an item is linked to nutrition information from the USDA National Nutrient Database for Standard Reference, ingredients and allergens will not be displayed.



Pretzel Dogs

PRETZEL MINI HOTDOG

SUPC: 8530483

Nutrition Information	
Serving size	1 Serving (91 grams)
Amount Per Serving	
Calories	250
% Daily Value*	
Total Fat 11g	14%
Saturated Fat 4.5g	23%
Trans Fat 0g	
Cholesterol 25mg	8%
Sodium 550mg	24%
Total Carbohydrate 26g	9%
Dietary Fiber 1g	4%
Total Sugars 2g	
Includes 2g Added Sugars	4%
Protein 9g	
Vitamin D 0mcg	0%
Calcium 60mg	4%
Iron 4.50mg	25%
Potassium 60mg	1%

* The % Daily Value (DV) tells you how much a nutrient in a serving of food contributes to a daily diet. 2000 calories a day is used for general nutrition advice.

Ingredients:

INGREDIENTS: BEEF FRANKFURTER (BEEF, WATER, SALT, CONTAINS LESS THAN 2% OF: SORBITOL, FLAVORING, POTASSIUM LACTATE, PAPRIKA, GARLIC POWDER, HICKORY SMOKE FLAVOR, SODIUM DIACETATE, SODIUM ERYTHORBATE, SODIUM NITRITE), BLEACHED ENRICHED WHEAT FLOUR (WHEAT FLOUR, MALTED BARLEY FLOUR, NIACIN, IRON, THIAMINE MONONITRATE, RIBOFLAVIN, FOLIC ACID), WATER, BROWN SUGAR, CONTAINS 2% OR LESS OF THE FOLLOWING: YEAST, DOUGH CONDITIONER (GUM ARABIC, WHEAT FLOUR, MONO- AND DIGLYCERIDES, SALT, CELLULOSE GUM, GUAR GUM, ENZYMES), SALT, CALCIUM PROPIONATE (PRESERVATIVE), BICARBONATES AND CARBONATES OF SODA. CONTAINS WHEAT. DOES NOT CONTAIN BIOENGINEERED FOOD INGREDIENTS.

Contains:

Wheat

Free From:

Crustaceans, Eggs, Fish, Milk, Peanuts, Sesame seeds, Shellfish, Soy, Tree Nuts

Notes

The nutrition information, ingredients/allergens and attributes/diet types displayed as well as any corresponding