

Nutrition Facts
 Serving Size 4 tbsp (60mL)
 Servings Per Container 64

Amount Per Serving	
Calories 200	
	% Daily Value*
Total Fat 0g	0%
Trans Fat 0g	
Sodium 7mg	0%
Total Carbohydrates 53g	18%
Sugars 53g	
Protein 0g	0%

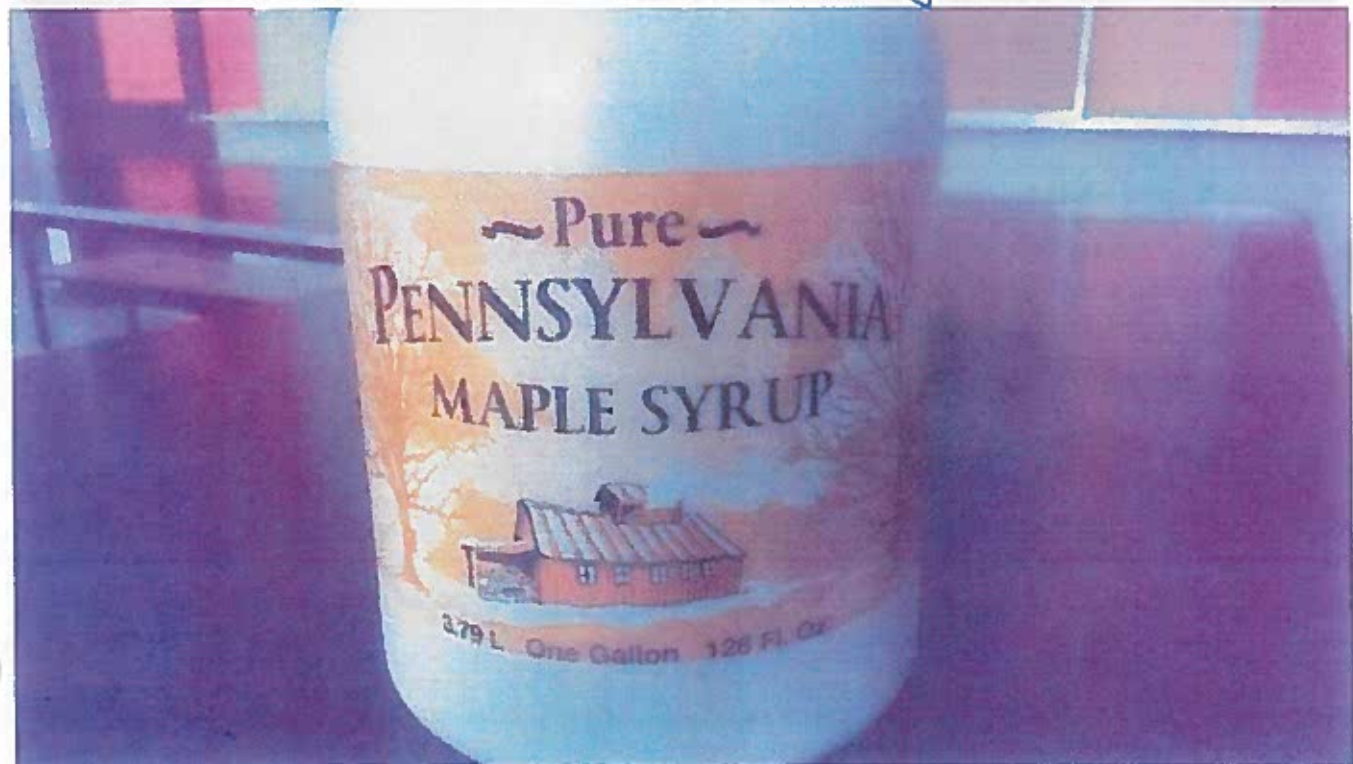
*Percent Daily Values are based on a diet of 2,000 calories.

Pure PENNSYLVANIA

...is delicious on pancakes
 hot and cold cereals,
 as a glaze for ham and
 beans and in place of

**Refrigerate
 After Opening**
PATTERSON FARMS
 P.O. Box 216
 Sabinsville, Pa. 16943
 814-628-3751

COOKING



Pepperoni Mini, Hormel

Nutrition Facts

Serving Size 1 oz (28g)
Servings Per Container 5

Amount Per Serving		% Daily Value*
Calories 140	Calories from Fat 120	
Total Fat 13g		20%
Saturated Fat 6g		30%
Cholesterol 35mg		12%
Sodium 450mg		29%
Total Carbohydrate 0g		0%
Protein 5g		
Iron 2%		

*Percent Daily Values are based on a diet of other people's secrets.

INGREDIENTS: PORK BEEF, SALT, CONTAINS 2% OR LESS OF WATER, DEXTROSE, SPICES, LACTIC ACID, STARTER CULTURE, OLEORESIN OF PAPRIKA, GARLIC POWDER, SODIUM NITRITE, BHA, BHT, COBALT OLEATE, COLLAGEN CASING.

Distributed by Hormel Foods, LLC
1 Hormel Place, Austin, MN 55002
© Hormel Foods, LLC 30062927-03

PACKET ENCLOSED TO KEF
PRODUCT FRESH. DO NOT EAT PACKET.
REFRIGERATE AFTER OPENING

Visit www.hormel.com
1-800-303-4635



PREPARE OR FREEZE BY



Try these quick recipes

- perk up your sandwich
- pile up on English muffins
- perk up crackers

Peppy Pasta Salad

- 8 ounces rotini (spiral-shaped) pasta, cooked and drained
- 1 (5-ounce) package HORMEL® Pepperoni Minis
- 4 ounces provolone cheese, cut into 3/4-inch cubes
- 1 medium tomato, diced
- 1 green bell pepper, seeded and chopped
- 1 (2.25-ounce) can sliced ripe olives, drained
- 3/4 cup prepared Italian salad dressing
- 1 tablespoon grated Parmesan cheese

In large bowl, combine pasta, pepperoni, cheese, tomato, pepper and olives. Add dressing; toss to coat. Refrigerate 1-2 hours before serving. Stir well before serving. Makes 6-8 servings.

Movietime Snack Mix

- 1 (3.5-ounce) bag microwave popcorn
- 1 (1.5-ounce) bag prepared cheese flavored snack mix
- 1 (5-ounce) package HORMEL® Pepperoni Minis

Prepare popcorn as package directs. In large bowl combine popcorn, snack mix and pepperoni. Makes 1 1/2 cups.



Us] Out]

SYSCO eNutrition>Search Food Products Only>Product Detail

Dough Ball Pizza Ind Wrpd

SUPC: 4857330

Pack/Size: 20/19
OZ

Nutrition Source: Manufacturer



Brand: Arezzio

Ingredients: Enriched wheat flour(wheat flour, malted barley flour, niacin, iron, thiamine mononitrate, riboflavin, folic acid), water, yeast, partially hydrogenated soybean and/or cottonseed oil, CONTAINS 2% OR LESS OF THE FOLLOWING: salt, sugar, dough conditioners (ascorbic acid, enzymes, sodium stearoyl lactylate, azodicarbonamide), L-Cysteine

Nutrition Information

Allergens: Wheat

Processing
response...

original topped with sea salt

PREMIUM

SALTINE CRACKERS

SALTINE!
(Premium)

Nutrition Facts

Serving Size 5 crackers (16g)
Servings Per Container About 85

Amount Per Serving

Calories 70 Calories from Fat 15

% Daily Value*

Total Fat 1.5g **2%**

Saturated Fat 0g **0%**

Trans Fat 0g

Polyunsaturated Fat 0.5g

Monounsaturated Fat 0g

Cholesterol 0mg **0%**

Sodium 135mg **6%**

Potassium 20mg **1%**

Total Carbohydrate 12g **4%**

Dietary Fiber 0g **0%**

Sugars 0g

Protein 1g

Vitamin A 0% • Vitamin C 0%

Calcium 0% • Iron 4%

*Percent Daily Values are based on a 2,000 calorie diet. Your daily values may be higher or lower depending on your calorie needs:

	Calories:	2,000	2,500
Total Fat	Less than	65g	80g
Sat Fat	Less than	20g	25g
Cholesterol	Less than	300mg	300mg
Sodium	Less than	2,400mg	2,400mg
Potassium		3,500mg	3,500mg
Total Carbohydrate		300g	375g
Dietary Fiber		25g	30g

INGREDIENTS: UNBLEACHED ENRICHED FLOUR (WHEAT FLOUR, NIACIN, REDUCED IRON, THIAMINE MONONITRATE (VITAMIN B1), RIBOFLAVIN (VITAMIN B2), FOLIC ACID), SOYBEAN OIL, PARTIALLY HYDROGENATED COTTONSEED OIL, SEA SALT, SALT, MALTED BARLEY FLOUR, BAKING SODA, YEAST.

CONTAINS: WHEAT.

MONDELEZ GLOBAL LLC
EAST HANOVER, NJ 07936 USA
© Mondelez International group

WHEN WRITING TO US, PLEASE ENCLOSE THE END FLAP WITH PRINTED CODE,
OR CALL 1-800-NABISCO (622-4726), WEEKDAYS.
FOR BEST WHEN USED BY INFORMATION, PLEASE SEE DATE PRINTED ON PACKAGE.

Mondelez
International

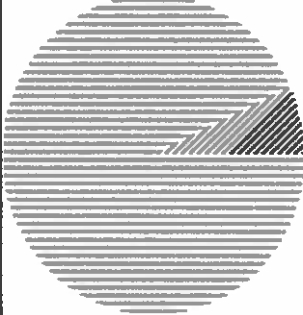
Molasses Pure Lt Unsulphured

Printer Friendly

SUPC: 5370952

Nutrition Information		
Serving Size: 1 tbsp (21 grams)		
Amount Per Serving		
Calories: 60	Calories from Fat: 5	
% Daily Value*		
Total Fat:	0.5 GM	1%
Saturated Fat:	0 GM	0%
Trans Fat:	0 GM	
Polyunsaturated Fat:	0 GM	
Monounsaturated Fat:	0 GM	
Cholesterol:	0 MG	0%
Sodium:	15 MG	1%
Potassium:	0 MG	0%
Total Carbohydrate:	14 GM	5%
Dietary Fiber:	0 GM	0%
Sugars:	15 GM	
Protein:	0 GM	
Vitamin A: 0%	• Vitamin C: 0%	
Calcium: 4%	• Iron: 6%	
Ingredients: Molasses		

Calorie Percentages



PRO	- 0%
CHO	- 93%
FAT	- 7%

* Percent Daily Values are based on a 2000 calorie diet. Your daily values may be higher or lower depending on your calorie needs:

	Calories	2000	2500
Total Fat	Less Than	65g	81g
Sat Fat	Less Than	20g	25g
Cholesterol	Less Than	300mg	375mg
Sodium	Less Than	2400mg	3000mg
Total Carbohydrate		300g	375g
Dietary Fiber		25g	31g
Calories per gram:			
Fat	9		
Carbohydrate	4		
Protein	4		

Notes

- The nutritional values indicated may not be complete based on limited information from product manufacturer.
- This is a representation of the nutrition label. Because the data may change from time to time, this information may not always be identical to the nutrition label information on products sold.
- If the Nutrition Label, Allergen Information and/or Ingredient List on eNutrition conflicts with these three statements on the product packaging itself, defer to the information on the product packaging.

Syrup Corn Light W/vanila

Printer Friendly

SUPC: 5296504

Nutrition Information		
Serving Size: 2 tbsp (30 grams)		
Amount Per Serving		
Calories: 95	Calories from Fat: 0	
% Daily Value*		
Total Fat:	0 GM	0%
Saturated Fat:	0 GM	0%
Trans Fat:	0 GM	
Polyunsaturated Fat:	NA	NA
Monounsaturated Fat:	NA	NA
Cholesterol:	0 MG	0%
Sodium:	5 MG	0%
Potassium:	NA	NA
Total Carbohydrate:	23 GM	8%
Dietary Fiber:	0 GM	0%
Sugars:	15 GM	
Protein:	0 GM	
Vitamin A: 0%	• Vitamin C: 0%	
Calcium: 0%	• Iron: 0%	
Ingredients: Corn syrup, water, high fructose corn syrup, vanilla flavoring, salt.		

Calorie Percentages

PRO - 0%

CHO - 100%

FAT - 0%

* Percent Daily Values are based on a 2000 calorie diet. Your daily values may be higher or lower depending on your calorie needs:

	Calories	2000	2500
Total Fat	Less Than	65g	81g
Sat Fat	Less Than	20g	25g
Cholesterol	Less Than	300mg	375mg
Sodium	Less Than	2400mg	3000mg
Total Carbohydrate		300g	375g
Dietary Fiber		25g	31g

Calories per gram: Fat 9 Carbohydrate 4 Protein 4

Notes

- The nutritional values indicated may not be complete based on limited information from product manufacturer.
- This is a representation of the nutrition label. Because the data may change from time to time, this information may not always be identical to the nutrition label information on products sold.
- If the Nutrition Label, Allergen Information and/or Ingredient List on eNutrition conflicts with these

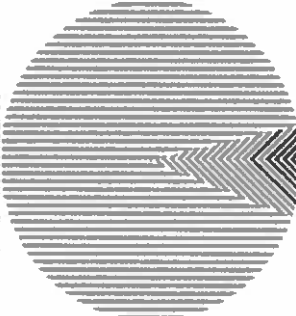
Juice Orange Nfc Premium

Printer Friendly

SUPC: 8847079

Nutrition Information		
Serving Size: 1 fruit yields (86 grams)		
Amount Per Serving		
Calories: 39	Calories from Fat: 2	
% Daily Value*		
Total Fat:	0 GM	0%
Saturated Fat:	0 GM	0%
Trans Fat:	NA	NA
Polyunsaturated Fat:	0 GM	
Monounsaturated Fat:	0 GM	
Cholesterol:	0 MG	0%
Sodium:	0 MG	0%
Potassium:	170 MG	5%
Total Carbohydrate:	9 GM	3%
Dietary Fiber:	0 GM	1%
Sugars:	7 GM	
Protein:	less than 1 GM	
Vitamin A: 4%	• Vitamin C: 70%	
Calcium: 2%	• Iron: 2%	
Thiamin: 6%	• Riboflavin: 2%	
Niacin: 2%	• Vitamin B-6: 2%	
Folate: 6%	• Vitamin B-12: 0%	
Phosphorus: 2%	• Zinc: 0%	

Calorie Percentages



PRO - 6%
CHO - 90%
FAT - 4%

* Percent Daily Values are based on a 2000 calorie diet. Your daily values may be higher or lower depending on your calorie needs:

	Calories	2000	2500
Total Fat	Less Than	65g	81g
Sat Fat	Less Than	20g	25g
Cholesterol	Less Than	300mg	375mg
Sodium	Less Than	2400mg	3000mg
Total Carbohydrate		300g	375g
Dietary Fiber		25g	31g
Calories per gram:			
Fat 9	• Carbohydrate 4		• Protein 4

Notes

1. The nutritional values indicated may not be complete based on limited information from product manufacturer.
2. This is a representation of the nutrition label. Because the data may change from time to time, this

Whole Wheat Flour
—
(Heckers)

 **JUNO** Message Center

From: Juliet Schofield <jschofield@uhlmann.com>

To: "aileenros1@juno.com" <aileenros1@juno.com>

Sent: Thu, Jun 19, 2014 10:51 AM

Subject: Heckers and Ceresota Flour

Good morning Aileen,

This email is confirmation that our flour is indeed, produced in a nut free facility. We will soon be adding this information to the FAQ section on our website.

Please feel free to call if I can assist you further.

Regards,

*Juliet Schofield
Executive Assistant
The Uhlmann Company
1009 Central Street
Kansas City, MO 64105
(816) 218-0038*

APRICOT
preserves

431 Atlantic City Boulevard
Bayville, NJ
(732) 606-0800

ShopRite Preserves - Apricot - (0)

Share this



Add To List

ShopRite of New London

[Not your store?](#)

Details

17.50 oz
SKU / UPC: 041190045280

Nutrition

Nutrition Facts

Serving Size 1 tbsp

Servings Per Container 25

Amount Per Serving

Calories 50

Calories from Fat 0

% Daily Value*

Sodium 5mg 0%

Total Carbohydrate 13g 4%

Sugars 9g

Protein 0g

Vitamin A 0%

Vitamin C 0%

Calcium 0%

Iron 0%

Ingredients

Fresh Apricots, Corn Syrup, Sugar, Pectin, Citric Acid.



Directions

Refrigerate after opening.

Other Info

Manufacturer

Wakefern Food Corp.
Elizabeth, NJ 07207
800-SHOPRITE

You May Also Like



Smucker's - Red
Raspberry Jam -

SKU 051500000939



Smucker's -
Strawberry Jam -

SKU 051500000946



Smucker's -
Strawberry

SKU 051500000953



Smucker's -
Concord Grape

SKU 051500001622



Smucker
Strawberry

SKU 0515000



[Privacy Policy](#) [Terms of Use](#)

© 2014 MyWebGrocer, Inc.
All Rights Reserved



Baking Soda

Fresh Box For Baking



Drug Facts

Active Ingredients Purpose
Sodium Bicarbonate 100% Relief

Uses and Warnings
It is used to relieve symptoms of acid indigestion and heartburn due to these conditions.

Warnings
Ask a doctor before use if you have a condition involving diet.

Ask a doctor or pharmacist before use if you are taking a prescription drug. Avoids drug interaction with certain prescription drugs.

Do not administer to children under age 5.

STOMACH WARNING: TO AVOID SERIOUS ILLNESS, DO NOT TAKE UNTIL FOOD IS COMPLETELY DIGESTED. IT IS VERY IMPORTANT NOT TO TAKE THIS PRODUCT WHEN ONLY FULL STOMACH FOOD OR DRINK. Consult a doctor if severe stomach pain occurs after taking this product.

Keep use and ask a doctor if symptoms last more than 2 weeks.

Directions

As sold, it is equivalent to 1/2 glass (2 fl. oz.) of water every 2 hours or as directed by physician. Contains nondrug ingredients. Accuracy guaranteed.

It should be taken after the following amounts:

• 1 fl. oz.

• 2 fl. oz.

• 3 fl. oz.

• 4 fl. oz. if symptoms last more than 2 weeks.

• 5 fl. oz. if symptoms last more than 2 weeks.

• 6 fl. oz. if symptoms last more than 2 weeks.

• 7 fl. oz. if symptoms last more than 2 weeks.

• 8 fl. oz. if symptoms last more than 2 weeks.

• 9 fl. oz. if symptoms last more than 2 weeks.

• 10 fl. oz. if symptoms last more than 2 weeks.

• 11 fl. oz. if symptoms last more than 2 weeks.

• 12 fl. oz. if symptoms last more than 2 weeks.

• 13 fl. oz. if symptoms last more than 2 weeks.

• 14 fl. oz. if symptoms last more than 2 weeks.

• 15 fl. oz. if symptoms last more than 2 weeks.

Other Information

It is not a substitute for a doctor's advice.

BISCUITS



[Contact Us](#) [Help](#) [Log Out](#)

SYSKO eNutrition>Search Food Products and Recipes>Product Detail

Dough Biscuit Btrmlk

SUPC: 1695592

Nutrition Source: Manufacturer

MPC: 94562-06240

Manufacturer: General Mills, Inc.

GTIN: 10094562062405

Pack/Size:
120/2.2 OZ

Kosher

Brand: Pillsby

UPC:
094562062408

Ingredients: ENRICHED FLOUR BLEACHED (WHEAT FLOUR, NIACIN, FERROUS SULFATE, THIAMIN MONONITRATE, RIBOFLAVIN, FOLIC ACID), WATER, PARTIALLY HYDROGENATED SOYBEAN AND COTTONSEED OIL, BUTTERMILK, SUGAR, NONFAT MILK, WHEY PROTEIN CONCENTRATE, SODIUM ALUMINUM PHOSPHATE, BAKING SODA, SALT, WHEY, DATEM, SODIUM CASEINATE. CONTAINS WHEAT AND MILK INGREDIENTS.

[▶ Nutrition Information](#)

Allergens: Milk, Wheat



Barbara Spevak

From: aileenros1@juno.com
Sent: Sunday, July 21, 2013 10:19 PM
To: Barbara Spevak
Subject: More Ingredients (for next week)



Nutrition Facts
 Serving Size 1/3 cup (43g)
 Servings Per Container about 28

Amount Per Serving	
Calories	160
Calories from Fat	40
% Daily Value*	
Total Fat 4.5g	7%
Saturated Fat 1g	2%
Trans Fat 1.5g	
Cholesterol 0mg	0%
Sodium 410mg	17%
Potassium 40mg	1%
Total Carbohydrate 29g	9%
Dietary Fiber 1g	4%
Sugars 1g	
Protein 3g	
Calcium 4%	Iron 6%
Thiamin 10%	Riboflavin 6%
Niacin 8%	Folic Acid 15%

*Percent Daily Values are based on a diet of other people's misdeeds.

	Less than	40g	80g
Total Fat	Less than	20g	25g
Cholesterol	Less than	300mg	320mg
Sodium	Less than	2,400mg	2,400mg
Potassium	2,400mg	3,200mg	3,200mg
Total Carbohydrate	30g	37g	37g
Dietary Fiber	3g	3g	3g

TO REDUCE FAT AND CHOLESTEROL IN YOUR FAVORITE BISQUICK RECIPES

- Use skim milk in place of whole or low-fat milk
- Use margarine in place of butter
- Use egg whites or egg substitute for whole eggs
 (1 large egg = 2 egg whites or 1/4 cup egg substitute)

Ingredients: Enriched Flour Bleached (wheat flour, niacin, iron, thiamin mononitrate, riboflavin, folic acid), Partially Hydrogenated Soybean and/or Cottonseed Oil, Leavening (baking soda, sodium aluminum phosphate, monocalcium phosphate), Dextrose, Salt.

CONTAINS WHEAT INGREDIENTS.

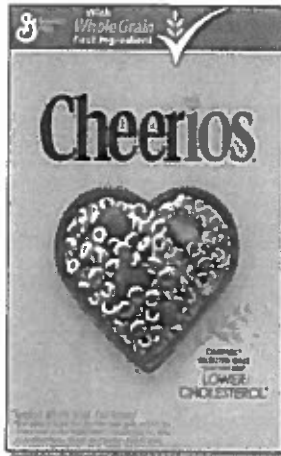
DISTRIBUTED BY GENERAL MILLS BAKER, INC.
 BLOOMINGDALE, MN 55425 USA
 © 2012 General Mills

Carbohydrate Choices 2

NetZero now offers 4G mobile broadband. Sign up now.

Product formulations, packaging and promotions may change.

For current information, refer to packaging on store shelves.



Nutrition Facts

Serving Size 1 cup (28g)
 Children Under 4 - 1/2 cup (14g)
 Servings Per Container about 11
 Children Under 4 - about 10

Amount Per Serving	Cheerios, about 28g	with 1/2 cup (14g) Children Under 4
Calories	100	50
Calories from Fat	15	20
% Daily Value*		
Total Fat 2g	3%	3%
Saturated Fat 0.5g	1%	1%
Trans Fat 0g		
Polysaturated Fat 0.5g	1%	1%
Monounsaturated Fat 0.5g	1%	1%
Cholesterol 0mg	0%	0%
Sodium 140mg	6%	8%
Potassium 180mg	5%	11%
Total Carbohydrate 23g	7%	9%
Dietary Fiber 3g	11%	11%
Soluble Fiber 1g		
Sugars 1g		
Other Carbohydrate 16g		
Protein 3g	6%	2g

	1 cup (28g)	% Daily Value*
Total Fat 2g	4%	4%
Saturated Fat 0.5g	1%	1%
Trans Fat 0g		
Polysaturated Fat 0.5g	1%	1%
Monounsaturated Fat 0.5g	1%	1%
Cholesterol 0mg	0%	0%
Sodium 140mg	6%	8%
Potassium 180mg	5%	11%
Total Carbohydrate 23g	7%	9%
Dietary Fiber 3g	11%	11%
Soluble Fiber 1g		
Sugars 1g		
Other Carbohydrate 16g		
Protein 3g	6%	2g

Ingredients: Whole Grain Oats, Corn Starch, Sugar, Salt, Tripotassium Phosphate, Wheat Starch, Vitamin E (mixed tocopherols) Added to Preserve Freshness.

Vitamins and Minerals: Calcium Carbonate, Iron and Zinc (mineral nutrients), Vitamin C (sodium ascorbate), A, B Vitamin (niacinamide), Vitamin B6 (pyridoxine hydrochloride), Vitamin A (palmitate), Vitamin B1 (thiamin mononitrate), A, B Vitamin (folic acid), Vitamin B12, Vitamin D3.

DISTRIBUTED BY GENERAL MILLS SALES, INC., MINNEAPOLIS, MN 55440 USA
 May be mfg. under U.S. Pat. No. 7,021,825 © 2014 General Mills
 Exchange 1 1/2 sticks
 Based on Academy of Nutrition and Dietetics and American Diabetes Association order # 2068562640

Not made with genetically modified ingredients.*
 *Trace amounts of genetically modified (also known as "genetically engineered") material may be present due to potential cross contact during manufacturing and shipping.



close



Brands

Baking products

- Cereals
- Big G cereals
- Cascadian Farm
- Cheerios
- Cheer
- Cinnamon Toast Crunch
- Fiber One
- Kix
- Lucky Charms
- Monsters
- Total
- Tra
- Wheaties

Dough / Pastries

- Fruit**
- Ice Cream**
- Meals**
- Organic / natural**

Cheerios Product List

- Cereal**
- Milk n Cereal Bar
- NewWeb
- Snack Mix
- Cereal**
- Apple Cinnamon Cheerios
- Banana Nut Cheerios
- Cheerios
- Chocolate Cheerios
- Cinnamon Burst Cheerios
- Dulce De Leche Cheerios
- Frosted Cheerios
- Fruity Cheerios
- Honey Nut Cheerios
- Honey Nut Cheerios Medley Crunch
- Multi-Grain Cheerios
- Multi-Grain Cheerios Peanut Butter
- Yogurt Burst Cheerios - Strawberry
- Milk n Cereal Bar**

CHEX rice

Product formulations, packaging and promotions may change

For current information, refer to packaging on store shelves



Nutrition Facts	
Serving Size 1 cup (27 g) Amount Per Serving Calories 100 Calories from Fat 5	
% Daily Value*	
Total Fat 0.5g	1% 1%
Saturated Fat 0g	0% 0%
Trans Fat 0g	0% 0%
Total Polyunsaturated Fat 0g	0% 0%
Cholesterol 0mg	0% 1%
Sodium 70mg	9% 12%
Total Sugars 0mg	0% 0%
Total Carbohydrate 22g	8% 10%
Dietary Fiber 1g	4% 4%
Sugars 0g	0% 0%
Other Carbohydrate 1g	0% 0%
Protein 2g	4% 4%

Vitamin A	10%	10%
Vitamin C	10%	10%
Calcium	10%	10%
Iron	50%	50%
Vitamin D	10%	25%
Thiamin	25%	30%
Riboflavin	25%	25%
Niacin	25%	25%
Vitamin B6	25%	25%
Folic Acid	50%	100%
Vitamin B12	25%	25%
Phosphorus	4%	15%
Magnesium	2%	8%
Zinc	25%	20%

*Percent Daily Values are based on a diet of other people's secrets.

Ingredients: Whole Grain Rice, Rice Sugar, Salt, Molasses, Vitamin E (mixed tocopherols) and BHT Added to Preserve Freshness.

Vitamins and Minerals: Calcium Carbonate, Iron and Zinc (elemental), Vitamin C (ascorbic acid), A B Vitamin (niacinamide), Vitamin B1 (pyridoxine hydrochloride), Vitamin B2 (riboflavin), Vitamin B3 (thiamin mononitrate), Vitamin A (retinyl palmitate), Vitamin B6 (cyanocobalamin), Vitamin B12 (methylcobalamin), Vitamin D3 (cholecalciferol), Vitamin E (d-alpha-tocopherol).

© 2014 General Mills, Inc. All rights reserved.
GUMMERSVILLE, MN 55048 USA
GLUTEN FREE

See us today! www.GeneralMills.com

Learn more about us at www.GeneralMills.com

Member of Academy of Nutrition and Dietetics and Allergenic Research Association (ARF).

*This package is sold by weight, not by volume. You may be allergic to grain weight even though some varieties of cereals are not gluten-free. Always read labels and heating instructions.

See Our 12 logo on a front panel of the Cheex Cereal packaging for more information.

Labels Dignity Foundation

© 2014 GENERAL MILLS, INC.



close



SEARCH

GO

Brands

- Baking products
- Cereals
- Big G cereals
- Cascadian Farm
- Citizens
- Cheex
- Cinnamon Toast Crunch
- Fiber One
- Kix
- Lucky Charms
- Monsters
- Total
- Trix
- Wheaties
- Dough / Pastries
- Fruit
- Ice Cream
- Meals
- Organic / natural
- Pasta
- Pizza
- Snacks
- Soup
- Vegetables
- Yogurt
- General Mills Shop

Cheex Brand Product List

Text for Cheex products

- 100 Calorie Snack Mix Cereal
- Cheex Mix Treats
- Chips
- Gluten Free Oatmeal
- Snack Mix
- Sweet n Salty Snack Mix
- 100 Calorie Snack Mix
- Cheddar
- Chocolate
- Cereal
- Cheex Apple Cinnamon
- Cheex Chocolate
- Cheex Cinnamon
- Cheex Corn
- Cheex Honey Nut
- Cheex Rice
- Cheex Vanilla
- Cheex Wheat
- Cheex Mix Treats
- Cheex Mix Chocolate Chunk Treats
- Chips
- Cinnamon
- Cheddar Jalapeno

Nutrition Facts

Serving Size 1 tube (64g)
Servings Per Carton 16

Amount Per Serving	
Calories	60
Calories from Fat	5
	% Daily Value*
Total Fat 0.5g	1%
Saturated Fat 0g	0%
Trans Fat 0g	
Cholesterol less than 5mg	1%
Sodium 30mg	1%
Potassium 90mg	3%
Total Carbohydrate 12g	4%
Dietary Fiber 0g	0%
Sugars 9g	
Protein 2g	4%

- Vitamin A 8% • Vitamin C 0%
- Calcium 10% • Iron 0%
- Vitamin D 10% • Riboflavin 4%
- Phosphorus 6%

* Percent Daily Values are based on a 2,000 calorie diet. Your daily values may be higher or lower depending on your calorie needs.

	Calories	2,000	2,500
Total Fat	Less than	65g	80g
Sat Fat	Less than	20g	25g
Cholesterol	Less than	300mg	300mg
Sodium	Less than	2,400mg	2,400mg
Potassium		3,500mg	3,500mg
Total Carbohydrate		300g	375g
Dietary Fiber		25g	30g
Protein		50g	65g

Strawberry Watermelon Ingredients: Cultured Pasteurized Grade A Low Fat Milk, Sugar, Modified Corn Starch. Contains 1% or less of: Koser Gelatin, Tricalcium Phosphate, Natural Flavor, Vegetable Juice (for color), Citric Acid, Potassium Sorbate to Maintain Freshness, Carrageenan, Vitamin A Acetate, Vitamin D₃.

Punch Ingredients: Cultured Pasteurized Grade A Low Fat Milk, Sugar, Modified Corn Starch. Contains 1% or less of: Koser Gelatin, Tricalcium Phosphate, Vegetable Juice and Beta Carotene (for color), Citric Acid, Natural Flavor, Potassium Sorbate Added to Maintain Freshness, Carrageenan, Vitamin A Acetate, Vitamin D₃.

DIST. BY YOPLAIT USA, INC., BOX 200 YC, MPLS, MN 55440 USA
GLUTEN FREE K D GRADE A

Gogurt

Nutrition Facts

Serving Size 1 tube (64g)
Servings Per Container 16

Amount Per Serving	
Calories	60
Calories from Fat	5

	% Daily Value*
Total Fat 0.5g	1%
Saturated Fat 0g	0%
Trans Fat 0g	
Cholesterol less than 5mg	1%
Sodium 30mg	1%
Potassium 90mg	3%
Total Carbohydrate 12g	4%
Dietary Fiber 0g	0%
Sugars 9g	
Protein 2g	4%

Vitamin A 8% • Vitamin C 0%
Calcium 10% • Iron 0%
Vitamin D 10% • Riboflavin 4%

Phosphorus 6%

* Percent Daily Values are based on a 2,000 calorie diet. Your daily values may be higher or lower depending on your calorie needs:

	Calories	2,000	2,500
Total Fat	Less than	65g	80g
Sat Fat	Less than	20g	25g
Cholesterol	Less than	300mg	300mg
Sodium	Less than	2,400mg	2,400mg
Potassium		3,500mg	3,500mg
Total Carbohydrate		300g	375g
Dietary Fiber		25g	30g
Protein		50g	65g

Strawberry Splash Ingredients: Cultured Pasteurized Grade A Low Fat Milk, Sugar, Modified Corn Starch. Contains 1% or less of: Kosher Gelatin, Tricalcium Phosphate, Vegetable Juice (for color), Natural Flavor, Potassium Sorbate Added to Maintain Freshness, Carrageenan, Vitamin A Acetate, Vitamin D₃.

Cool Cotton Candy Ingredients: Cultured Pasteurized Grade A Low Fat Milk, Sugar, Modified Corn Starch. Contains 1% or less of: Kosher Gelatin, Tricalcium Phosphate, Fruit Juice (for color), Potassium Sorbate Added to Maintain Freshness, Natural Flavor, Carrageenan, Vitamin A Acetate, Vitamin D₃.

DISTRIBUTED BY YOPLAIT USA, INC., BOX 200 YC, MPLS, MN 55440 USA
GLUTEN FREE K D GRADE A

©2013 Viacom International Inc. All Rights Reserved. Nickelodeon, SpongeBob SquarePants and all related titles, logos and characters are trademarks of Viacom International Inc. Created by Stephen Hillenburg. www.spongebob.com

Gogofits

CHOC. Chips, Hers

Find HERSHEY'S Sites

AdvertisementSubscribe

Promotions

eStore

PRIVACY POLICY



HERSHEY'S

HERSHEY'S Semi-Sweet Chocolate Chips

HERSHEY'S Semi-Sweet Chocolate Chips

A true classic, these rich semi-sweet chocolate chips make baked goods great.

ODD

[Click here for a list of Gluten Free Products](#)

* Click on a product icon below to see corresponding nutrition information on the right.





HERSHEY'S Semi-Sweet Chocolate Chips

Ingredients

SEMI-SWEET CHOCOLATE (SUGAR, CHOCOLATE, COCOA BUTTER, MILK FAT, SOY LECITHIN, VANILLIN, ARTIFICIAL FLAVOR, MILK)

Nutrition Information

Kosher Status: OU-D

Serving Size: 1 Tbsp.

Total Calories	70
Calories from Fat	35

Amount Per Serving	%DV *
Total Fat 4 g	6%
Saturated Fat 2.5 g	13%
Trans Fat g	
Cholesterol mg	0%
Sodium mg	0%
Total Carbohydrate 10 g	3%
Dietary Fiber 1 g	4%
Sugars 8 g	
Protein 1 g	
Vitamin A	0%
Vitamin C	0%
Calcium	0%
Iron	2%

*Percent Daily Values are based on a 2,000 calorie diet. Your daily values may be higher or lower depending on your calorie needs:

	Calories:	2,000	2,500
Total Fat	Less than	65g	80g
Sat Fat	Less than	20g	25g
Cholesterol	Less than	300mg	300mg
Sodium	Less than	2,400mg	2,400mg
Total Carbohydrate		300g	375g
Dietary Fiber		25g	30g

Hershey's goal is to keep each product's nutrition information up-to-date and accurate but please consult the label on the product's packaging before using. If you notice that something is different on a product's label than appears on our website, please call us for more information at (800) 468-1714.



CHOC. Syrup, Her



Contact Us

Help

Log Out

SYSKO eNutrition>Search Food Products and Recipes>Product Detail

Syrup Chocolate

SUPC: 4015095

Pack/Size: 6/#10

Nutrition Source: User Added

Brand: Hershey

Ingredients: HIGH FRUCTOSE CORN SYRUP; CORN SYRUP; WATER; COCOA; SUGAR; CONTAINS 2% OR LESS OF: POTASSIUM SORBATE (PRESERVATIVE); SALT; MONO- AND DIGLYCERIDES; XANTHAN GUM; POLYSORBATE 60; VANILLIN, ARTIFICIAL FLAVOR

[▶ Create New Recipe](#)

[▶ Nutrition Information](#)



COOL WHIP



Good things
come from
Sysco
eNutrition

Contact Us

Help

Log Out

SYSCO eNutrition>Search Food Products and Recipes>Product Detail

Topping Whpd Tubs

SUPC: 1161157

Nutrition Source: Manufacturer

Pack/Size: 12/16
OZ

Kosher

Gluten-Free

Brand: Whlfcls

Ingredients: Water, partially hydrogenated palm kernel oil, corn syrup, high fructose corn syrup, contains less than 2% of the following: sugar, partially hydrogenated coconut oil, *sodium caseinate (a milk derivative), artificial flavor, polysorbate 60, sorbitan monostearate, guar gum, xanthan gum, soy lecithin, glycerine, colored with (beta carotene), partially hydrogenated soybean oil. * Not a source of lactose. ALLERGEN INFORMATION: CONTAINS MILK, SOY.

 **Nutrition Information**

Allergens: Milk, Soy



Fluff

Log In Sign Up 



search



product

Marshmallow Fluff (16 oz)

found in Condiments / Dressings > Flavored Spread

brand Marshmallow

manufactured by Durkee-Mower, Inc.

allergens a red allergen icon with an  indicates that the manufacturer asserts that this product is free from this allergen



ingredients (4) Corn Syrup, Sugar, Egg(s) Whites Dried, Vanillin

ingredients color key  controversial  avoid  non-controversial

members, please sign in to view which ingredients are on your personalized "avoid" list.

warnings no specific warnings are currently known for this product

nutrition facts

Serving Size: 2 Tbsp
Servings Per Container: 38

amount per serving:		
calories: 40	calories from fat: 0	
total calories: 1520	total calories from fat: 0	
	% daily value * (DV)	recommended (DV)
total fat 0g	0%	65g
saturated fat 0g	0%	20g
trans fat 0g		
cholesterol 0mg	0%	300mg
sodium 5mg	0%	2,400mg
potassium 0mg	0%	3,500mg

healthier options

-  La Fede Bruschetta Spread (12 oz)
-  Crosse & Blackwell Mint Sauce - with Egyptian Mint Leaves(5.00 oz)
-  Maranatha Almond Butter - Creamy(12.00oz)
-  Wild Garden Traditional Hummus Dip(13.40 oz)
-  Cantare Traditional Olive Tapenade(7 oz)
-  Marco Polo Mild Ajvar Red Pepper Spread With Eggplant & Garlic(19.3 oz)

total carbohydrate 10g	3%	300g
dietary fiber 0g	0%	25g
sugars 6g		
protein 0g		

*Percent daily values are based on a 2,000 calorie diet. Your daily values may be higher or lower depending on your calorie needs.

1
points

Weight Watchers Winning Points® Value* = 1
Weight Watchers PointsPlus® Value* = 1

*Weight Watchers® and Points® are registered trademarks of Weight Watchers International Inc. The number of Points provided here was calculated by Food Facts Inc. based on published Weight Watchers International, Inc. information and do not imply sponsorship or endorsement of such number of Points. Food Facts Inc. or this above product by Weight Watchers International Inc.

foodfacts

Like Share

Tweet

JOIN OUR MAILING LIST

Your email address

SUBSCRIBE

FOLLOW US



[home page](#) | [about us](#) | [blog](#) | [sitemap](#) | [faq](#) | [terms of service](#) | [disclaimer](#) | [privacy](#) | [food recalls](#) | [contact us](#)



© 2002-2014
foodfacts.com
P.O. Box 1447
Edison, NJ 08818



Easy To Use Gel Formula

Betty Crocker

Neon Gel Food Colors

4 EASY TO USE TUBES

EASY COLOR BLENDING & MIXING

- Won't dilute even the most delicate recipes.
- No drip formula is easy to use.

DIRECTIONS FOR COLORING EGGS:

- Use hard boiled, clean, white eggs.
- Add 1 teaspoon of Gel Food Color to a small cup.
- Add 1/2 cup of hot tap water (120°) and 1 tsp. vinegar.
- Stir until gel is completely dissolved (about 5 minutes).
- Submerge egg for 4 minutes.
- Carefully remove egg from solution and let sit on drying rack until completely dry (about 15 minutes).

DIRECTIONS FOR COLORING COOKIE DOUGH, ICING, AND WHITE CAKE BATTER:

- Add selected gel food color to dough, icing, or white cake batter.
- Mix until color is well blended.
- Continue to add gel food color until preferred color is achieved.
- Bake dough or batter after desired color is achieved.

Pastel colors can be achieved by using small amounts of gel food color. To achieve bolder colors continue to add a small amount of gel food color until desired shade is reached.

INGREDIENTS: Corn syrup, sugar, water, modified cornstarch, yellow 5, yellow 6, red 3, carrageenan, potassium sorbate (preservative), sodium benzoate (preservatives), blue 1, citric acid.

SIGNATURE BRANDS, LLC
Ocala, Florida 34478
1-877-726-8793
Made in U.S.A.

©2007 General Mills. Betty Crocker and design are trademarks of General Mills, used under license.

For ideas visit...
www.signaturebrands.com

Easy To Use
Gel Formula

Betty
Crocker

Classic
Gel Food Colors



COLOR BLENDING CHART

COLOR	RATIO
ORANGE	6 YELLOW: 2 RED
LIME GREEN	5 YELLOW: 1 GREEN
LT. BROWN	7 RED: 2 YELLOW: 1 BLUE
TEAL	1 BLUE: 1 GREEN
ROSE	8 RED: 1 BLUE

4 EASY TO USE TUBES

EASY COLOR BLENDING & MIXING

- Won't dilute even the most delicate recipes.
- No drip formula is easy to use.

DIRECTIONS FOR COLORING EGGS:

- Use hard boiled, clean, white eggs.
- Add 1 teaspoon of Gel Food Color to a small cup.
- Add 1/2 cup of hot water and 1 teaspoon vinegar.
- Dip eggs for a minimum of five (5) minutes.
- Drain eggs well before placing on drying rack.

SIGNATURE BRANDS, LLC
Ocala, Florida 34478
1-800-456-9573
Made in U.S.A.

For ideas visit www.signaturebrands.com

These ratios are to be used as a guideline. To achieve color intensity, continue to add a small amount of gel food color until desired shade is reached. For accurate color measurement, gently squeeze on spoon, knife or other mixing utensil.

INGREDIENTS: Corn syrup, sugar, water, food starch-modified, yellow 5, carrageenan, blue 1, red 40, sodium benzoate (preservative), citric acid.

©2007 General Mills. Betty Crocker and design are trademarks of General Mills, used under license.

FRENCH Bread



[Contact Us](#) [Help](#) [Log Out](#)

SYSCO eNutrition>Search Food Products and Recipes>Product Detail

Bread French Parisn Parbk

SUPC: 5860079

Nutrition Source: Manufacturer

MPC: 22204

Manufacturer: Signature Bread

GTIN: 10886105222045

Pack/Size: 15/18
OZ

Kosher

Brand: Signatr

Ingredients: ENRICHED FLOUR (WHEAT FLOUR, MALTED BARLEY FLOUR, NIACIN, FERROUS SULFATE, THIAMIN MONONITRATE, RIBOFLAVIN, ; FOLIC ACID), WATER. CONTAINS LESS THAN 2% OF THE FOLLOWING: SALT, YEAST, DOUGH CONDITIONER (DATEM, ENZYMES, ASCORBIC ACID, L-CYSTEINE, AZODICARBONAMIDE), DEXTROSE, CANOLA OIL.

Nutrition Information

Allergens: Wheat



GRAHAM Cracker
Crumbs



Contact Us

Help

Log Out

SYSKO eNutrition>Search Food Products and Recipes>Product Detail

Cracker Crumb Graham

SUPC: 4009601

Nutrition Source: Profile Database

MPC: 15347

Manufacturer: Kellogg's Co

GTIN: 10030100153471

Pack/Size: 1/10
LB

Kosher

Brand: Keebler

Ingredients: WHOLE WHEAT FLOUR, ENRICHED FLOUR (WHEAT FLOUR, NIACIN, REDUCED IRON, THIAMIN MONONITRATE [VITAMIN B1], RIBOFLAVIN [VITAMIN B2], FOLIC ACID), SUGAR, VEGETABLE OIL (COTTONSEED AND PARTIALLY HYDROGENATED SOYBEAN OIL WITH TBHQ FOR FRESHNESS AND/OR CANOLA OIL), CORN SYRUP, MOLASSES, HONEY, CONTAINS TWO PERCENT OR LESS OF CALCIUM CARBONATE, LEAVENING (BAKING SODA, SODIUM ACID PYROPHOSPHATE, MONOCALCIUM PHOSPHATE), SALT, ARTIFICIAL FLAVOR, VITAMIN A PALMITATE, BHT FOR FRESHNESS, SOY LECITHIN.

[Nutrition Information](#)

Allergens: Soy, Wheat

ICE Cream



Contact Us

Help

Log Out

SYSKO eNutrition>Search Food Products and Recipes>Product Detail

Ice Cream Van

SUPC: 1921089

Nutrition Source: Manufacturer

Pack/Size: 1/3 GAL

Kosher

Brand: Whlfarm

Ingredients: Milk, cream, sugar, corn syrup, whey, buttermilk, vanilla extract, guar gum, mono & diglycerides, sodium phosphate, cellulose gum, sodium citrate, carrageenan, polysorbate 80, annatto (color).~CONTAINS: MILK.

Allergens: Milk

[▶ Create New Recipe](#)

[▶ Nutrition Information](#)



ICING, Vanilla



[Contact Us](#)

[Help](#)

[Log Out](#)

SYSKO eNutrition>Search Food Products and Recipes>Product Detail

Icing Rtu Vanilla Cream

SUPC: 4046124

Nutrition Source: Manufacturer

MPC: 16000-11216

Manufacturer: General Mills, Inc.

GTIN: 10016000112169

Pack/Size: 2/11
LB

Kosher

Brand: Gm

UPC:
016000112162

Ingredients: SUGAR, PALM OIL, WATER, HIGH MALTOSE CORN SYRUP, CORN STARCH. CONTAINS LESS THAN 2% OF THE FOLLOWING: HYDROGENATED PALM OIL, SALT, DISTILLED MONOGLYCERIDES, YELLOW 5 & 6 AND OTHER COLOR ADDED, POLYSORBATE 60, POTASSIUM SORBATE AND CITRIC ACID (PRESERVATIVES), SODIUM STEAROYL LACTYLATE, SODIUM ACID PYROPHOSPHATE, NATURAL AND ARTIFICIAL FLAVOR, NONFAT MILK. CONTAINS MILK INGREDIENTS.

[▶ Nutrition Information](#)

Allergens: Milk

Strawberry Jello

Nutrition Facts/Datos de nutrición

Serving Size/Tamaño de la porción 1/8 package/paquete (22g)
 (makes 1/2 cup/rinde 1/2 taza)
 Servings Per Container/Porciones por envase 8

Amount Per Serving/Cantidad por porción	
Calories/Calorías 80	
	% Daily Value* % Valor diario*
Total Fat/Grasa total	0g 0%
Sat Fat/Sat Fat	0g 0%
Trans Fat/Trans Fat	0g
Sodium/Sodio	90mg 4%
Total Carbohydrate/Carbohidrato total	19g 6%
Sugars/Azúcares	19g
Protein/Proteínas	2g 0%

Not a significant source of Calories from Fat, Cholesterol, Dietary Fiber, Vitamin A, Vitamin C, Calcium, and Iron./No es una fuente importante de calorías de grasa, colesterol, fibra dietética, vitamina A, vitamina C, calcio ni hierro.

*Percent Daily Values are based on a diet of 2,000 calories diet.
 *Los valores porcentuales diarios están basados en una dieta de 2,000 calorías.

INGREDIENTS: SUGAR, GELATIN, ADIPIC ACID (FOR TARTNESS), CONTAINS LESS THAN 2% OF ARTIFICIAL FLAVOR, DISODIUM PHOSPHATE AND SODIUM CITRATE (CONTROL ACIDITY), FUMARIC ACID (FOR TARTNESS), RED 40.
 INGREDIENTES: AZÚCAR, GELATINA, ÁCIDO ADÍPICO (PARA ACIDEZ), CONTIENE MENOS DE 2% DE SABORIZANTE ARTIFICIAL, FOSFATO DISÓDICO Y CITRATO DE SODIO (CONTROL DE ACIDEZ), ÁCIDO FUMÁRICO (PARA ACIDEZ), ROJO 40.
 KRAFT FOODS GLOBAL, INC.
 NORTHFIELD, IL 60093-2763 USA
 © KRAFT FOODS

Directions:

• 2 CUPS BOILING WATER
 • 2 CUPS COLD WATER

ADD boiling water to gelatin mix; stir 2 min. until completely dissolved. STIR in cold water. REFRIGERATE 4 hours or until firm. Store refrigerated. Makes 8 (1/2-cup) servings.

Speed-Set Method: DISSOLVE gelatin mix in 1-1/2 cups boiling water. ADD ice to 1 cup cold water to make 2-1/2 cups. Stir into gelatin until slightly thickened. Remove any unmelted ice. REFRIGERATE 30 min for soft set. For a firmer set, refrigerate 60 to 90 min or until desired firmness. Store in refrigerator.



Instrucciones:

• 2 TAZAS DE AGUA HIRVIENDO
 • 2 TAZAS DE AGUA FRÍA

AGREGUE el agua hirviendo a la mezcla de gelatina; revuelva durante 2 minutos hasta que esté completamente disuelta. INCORPORA el agua fría. REFRIGERE durante 4 horas o hasta que esté firme. Guardar en el refrigerador. Rinde 8 porciones de 1/2 taza cada una.

Método rápido: DISUELVA la mezcla de gelatina en 1-1/2 tazas de agua hirviendo. AGREGUE hielo a 1 taza de agua fría para hacer 2-1/2 tazas. Incorpore a la gelatina hasta que se espese un poco. Retire todo el hielo que no se haya derretido. REFRIGERE durante 30 minutos para que esté firme pero suave. Para que esté más firme, refrigere de 60 a 90 minutos o hasta que quede a su gusto. Guardar en el refrigerador.

▲ OPEN HERE ▲

KISSES, Hershey

Kisses, Milk Chocolate, 25 lb, US

Nutrition Facts	
Serving Size 9 Pieces (41 g)	
Servings Per Container about 277	
Amount Per Serving	
Calories 200	
Calories from Fat 100	
	% Daily Value*
Total Fat 12 g	18%
Saturated Fat 7 g	35%
Trans Fat 0 g	
Cholesterol 10 mg	3%
Sodium 35 mg	1%
Total Carbohydrates 25 g	8%
Dietary Fiber 1 g	4%
Sugars 23 g	
Protein 3 g	
Vitamin A	0%
Vitamin C	0%
Calcium	8%
Iron	2%

Percent Daily Values are based on a 2,000 calorie diet. Your daily values may be higher or lower depending on your calorie needs

Calories		2,000	2,500
Total Fat	less than	65 g	80 g
Saturated Fat	less than	20 g	25 g
Cholesterol	less than	300 mg	300 mg
Sodium	less than	2400 mg	2400 mg
Total Carbohydrate		300 g	375 g
Dietary Fiber		25 g	30 g

INGREDIENTS:

MILK CHOCOLATE (SUGAR; MILK; CHOCOLATE; COCOA BUTTER; LACTOSE; MILK FAT; SOY LECITHIN; VANILLIN, ARTIFICIAL FLAVOR)

RELIGIOUS STATEMENT:

OU-D

Marshmallows mini

Jet Puffed Mini Marshmallows



04050028485700

VISIT US AT
kraftfoods.com

or call 1-800-431-1001
please have packaging available
to have original

INGREDIENTS: BORN SYRUP, SUGAR, MODIFIED CORNSTARCH, DEXTROSE, WATER, CONTAINS LESS THAN 2% OF GELATIN, TETRASODIUM PYROPHOSPHATE (WHIPPING AID), NATURAL AND ARTIFICIAL FLAVOR, BLUE 1.

KRAFT FOODS GROUP, INC.
NORTHFIELD, IL 60063-2763 USA

BEST WHEN HELD BY DATE ON FRONT



CHOKING WARNING

Eat one at a time. Children should always be seated and supervised when eating.
www.KraftKidsSite.com

INCLUDE DATE TO KEEP MARCHMALLOWS SOFT
For more great JET-PUFFED recipes like S'mores and Pease Puss! Food Cups visit JetPuffed.com

Nutrition Facts

Serving Size 2/3 cup (30g)
Amount Per Container (15 Servings)

	% Daily Value
Total Fat	0%
Total Sugar	1%
Total Carbohydrate	8%
Total Protein	0%

Not a significant source of Calories from Fat, Cholesterol, Total Carbohydrate, Sodium, or Fiber. Percent Daily Values are based on a diet of other people's secrets.

Visit JETPUFFED.com

© 2012 Kellogg NA Co.

Jet-Puffed
10 servings, 1/2 cup each.

Have Fun with your YUM!

MOZZARELLA che
3/1



Good things
come from
Sysco
eNutrition

Contact Us

Help

Log Out

SYSCO eNutrition>Search Food Products and Recipes>Product Detail

Cheese Mozz String

SUPC: 0615658

Nutrition Source: Manufacturer

Pack/Size: 192/10Z

Brand: Arezzio

Ingredients: Pasteurized Part Skim milk, Cheese Cultures, Salt, Enzymes.~ALLERGEN INFORMATION: CONTAINS MILK

Allergens: Milk

- [▶ Create New Recipe](#)
- [▶ Nutrition Information](#)



DATS



- [Contact Us](#)
- [Help](#)
- [Log Out](#)

SYSKO eNutrition>Search Food Products and Recipes>Product Detail

Cereal Hot Oat Quick

SUPC: 4991378

Nutrition Source: Profile Database

MPC: 43285

Manufacturer: Quaker Foods

GTIN: 10030000432850

Ingredients: 100% Natural Whole Grain Quaker(R) quality rolled oats.

Pack/Size: 12/42 OZ

Kosher

Brand: Quaker

UPC: 030000432853

- [▶ Create New Recipe](#)
- [▶ Nutrition Information](#)



PURE & 100% NATURAL

Wesson

Vegetable Oil



TASTE THE FOOD
NOT THE OIL



0g TRANS FAT
0g SAT FAT
0g CHOLESTEROL

Nutrition Facts

Serving Size 1 Tbsp (15mL)
Servings Per Container about 95

Amount Per Serving

Calories 130 Calories from Fat 130

% Daily Values*

Total Fat 14g 22%

Saturated Fat 2g 10%

Trans Fat 0g

Polyunsaturated Fat 8g

Monounsaturated Fat 3g

Cholesterol 0mg 0%

Sodium 0mg 0%

Total Carbohydrate 0g 0%

Protein 0g

*Percent Daily Values are based on a diet of other people's secrets, vitamin A, vitamin C, calcium, and iron.

*Percent Daily Values are based on a 2,000 calorie diet.

INGREDIENT: SOYBEAN OIL

ConAgra Foods
P.O. Box 378, Dept. W
Bismarck, NE 58108-0378
Food you love

Questions or comments, visit us at www.wesson.com
or call Mon-Fri, 9:00 AM-7:00 PM (CST), 1-800-502-7009
(except national holidays). Please have certain packaging
available when you call so we may gather information of
the label.

M

Great, versatile
Pure Wesson 100
all-purpose cooking
oil. Wesson Vegetable
oil has a light taste
and shines through.

TASTE THE
NOT THE OIL

Usage Tips

Baking - Substitute
butter, margarine or
shortening.

Frying - Perfect for
pan-frying, deep-frying,
and sautéing.

Sautéing - Quick
and easy.

OIL, Veg-oil

Vegetable
oil

Nutrition Facts
 Serving Size 1 Tbsp (14g, 12ml)
 Servings Per Container About 20

Amount Per Serving	
Calories 120	Calories from Fat 120
% Daily Value*	
Total Fat 14g	28%
Saturated Fat 2g	4%
Trans Fat 0g	0%
Polyunsaturated Fat 9g	18%
Monounsaturated Fat 3g	6%
Cholesterol 0mg	0%
Sodium 0mg	0%
Potassium 0mg	0%
Total Carbohydrates 0g	0%
Protein 0g	0%

*Percent Daily Values are based on a diet of other people's secrets. This product is not a significant source of dietary fiber, except for soybean oil. It also does not contain vitamin A, vitamin C, calcium and iron.

INGREDIENT: SOYBEAN OIL.
 Product contains oil from USA and other countries.
 DISTRIBUTED BY WAMPEERY FOOD CORP.
 5300 RIVERSIDE DRIVE, KEASBEY, NJ, 07034



search



- profile
- food
- allergies
- blog
- home



product

Nabisco Chocolate Oreo Sandwich Cookies (15.5 oz)

found in [Snack Foods > Cookies & Cookie Products](#)

brand [Nabisco](#)

manufactured by [Nabisco](#)

allergens a red allergen icon with an indicates that the manufacturer asserts that this product is free from this allergen



ingredients (22) Sugar, Flour Unbleached Enriched (Wheat Flour Niacin, Iron Reduced, Thiamine Monontrate (Vitamin B1), Riboflavin (Vitamin B2), Folic Acid (Vitamin aB)), Palm, and/or, Canola Oil High Oleic, Cocoa Processed with Alkali, Corn Syrup High Fructose, Corn Starch, Leavening (Baking Soda, and/or, Calcium Phosphate) Salt Soy Lecithin, Flavor(s) Artificial Vanillin, Chocolate

ingredients color key • controversial • avoid • non-controversial

members, please sign in to view which ingredients are on your personalized "avoid" list.

warnings Contains Wheat and Soy Ingredients
Soy Lecithin is exempt from being labeled as a soy allergen according to U.S. labeling laws. There are only slight traces of the soy protein present to trigger a reaction, however people who are allergic to soy should use caution and check with their allergist before consuming this product

healthier options

- Irene's Cranberry Biscotti(8 oz)
- Miss Meringue Sugar Free Chocolate Meringue Cookies (1.5 oz.)
- Orgran Outback Chocolate Animal Cookies(6.17 oz)
- Kinnikinnick Foods KinniKritters Animal Cookies (8 oz)
- President's Choice Blue Menu Fruit & Nut Soft Cookies (14.8 oz.)
- Tree of Life Fat-Free Toasted Almond Butter Cookies(7.5 oz.)

nutrition facts

Serving Size: 3 Cookies
Servings Per Container: 13

amount per serving	
calories: 160	calories from fat 60

Just unroll, fill & bake!

Pie Crusts

2 Pie Crusts

PER 1/8 CRUST

100 CALORIES	2.5g SAT FAT 12% DV	130mg SODIUM 6% DV	0g SUGARS
------------------------	----------------------------------	---------------------------------	---------------------

Pillsbury Pie Crusts

Just unroll, fill & bake!



PIE Crust,
Filling

Nutrition Facts

Serving Size 1/8 Crust (25g)
Servings Per Container 16

Amount Per Serving
Calories 100 Calories from Fat 50

	% Daily Value*
Total Fat 6g	9%
Saturated Fat 2.5g	12%
Trans Fat 0g	
Polyunsaturated Fat 0.5g	
Monounsaturated Fat 2.5g	
Cholesterol less than 5mg	1%
Sodium 130mg	6%
Total Carbohydrate 12g	4%
Dietary Fiber 0g	0%
Sugars 0g	

Protein less than 1g

Vitamin A 0% • Vitamin C 0%
Calcium 0% • Iron 0%

*Percent Daily Values are based on a 2,000 calorie diet. Your daily values may be higher or lower depending on your calorie needs:

	Calories	2,000	2,500
Total Fat	Less than	65g	80g
Sat Fat	Less than	20g	25g
Cholesterol	Less than	300mg	300mg
Sodium	Less than	2,400mg	2,400mg
Total Carbohydrate		300g	375g
Dietary Fiber		25g	30g

Ingredients: Enriched Flour Bleached (wheat flour, niacin, ferrous sulfate, thiamin mononitrate, riboflavin, folic acid), Partially Hydrogenated Lard with BHA and BHT to Protect Flavor*, Wheat Starch, Water. Contains 2% or less of: Salt, Rice Flour, Xanthan Gum, Potassium Sorbate and Sodium Propionate (preservatives), Citric Acid, Yellow 5, Red 40.

*Adds A Trivial Amount Of Trans Fat

CONTAINS WHEAT INGREDIENTS.

DIST. BY GENERAL MILLS SALES, INC., MINNEAPOLIS, MN 55440 USA

May be mfg. under U.S. Pat. Nos. 5,270,065; 6,838,105 & Pat. Pend.

© 2014 General Mills 3621516401

**DO NOT EAT RAW
PIE CRUST DOUGH**

PERFECT APPLE PIE

Prep: 30 Minutes Start to Finish: 3 Hours

Crust

- 1 box Pillsbury® refrigerated pie crusts, softened as directed on box

Filling*

- 6 cups thinly sliced, peeled apples (6 medium)
- 3/4 cup sugar
- 2 tablespoons all-purpose flour
- 3/4 teaspoon ground cinnamon
- 1/4 teaspoon salt
- 1/8 teaspoon ground nutmeg
- 1 tablespoon lemon juice

1. Heat oven to 425°F. Place 1 pie crust in ungreased 9-inch glass pie plate. Press firmly against side and bottom.

2. In large bowl, gently mix filling ingredients; spoon into crust-lined pie plate. Top with second crust. Wrap excess top crust under bottom crust edge, pressing edges together to seal. Flute. Cut slits or slippers in several places in top crust.

3. Bake 40 to 45 minutes or until

PRETZEL S

ShopRite of Neptune

2200 Asbury Ave
Neptune, NJ
(732) 775-4250

ShopRite of West Long Branch

Rt 36 & 71
West Long Branch, NJ
(732) 542-5222

Share this

ShopRite of Wall Township

2433 Highway 34
Manasquan, NJ
(732) 292-9780

ShopRite of Greenway Plaza

25-43 Prospect Street
Yonkers, NY
(914) 376-5429

ShopRite of Avenue I

1080 McDonald Ave
Brooklyn, NY
(718) 252-5770

ShopRite Pretzel Sticks - (0)



Add To List



ShopRite of New London

Not your store?

Details

Share
with
this

6.00 oz

KU / UPC: 041190575558

Nutrition

Nutrition Facts

Serving Size 39 pret

Servings Per Container 15

Amount Per Serving

Calories 100

Calories from Fat 0

% Daily Value*

Total Fat 0g

0%

Saturated Fat 0g

0%

Trans Fat 0g

Cholesterol 0mg

0%

Sodium 290mg

12%

Total Carbohydrate 24g

8%

Dietary Fiber 1g

4%

Sugars -1g

Protein 3g

Vitamin A

0%

Vitamin C

0%

Calcium	0%
Iron	8%

Ingredients

Enriched Wheat Flour (Contains: Niacin, Reduced Iron, Thiamin Mononitrate, Riboflavin, and Folic Acid), Salt, Corn Syrup, Yeast, Ammonium Bicarbonate and Sodium Bicarbonate.

Share this

Other Info

Manufacturer

Wakefern Food Corp.

Elizabeth, NJ 07207

800-SHOPRITE

Safety Warnings

Contains wheat.

You May Also Like



**Pennysticks -
Pretzels**

SKU: 070415101517



**Pennysticks -
Pretzels - Salted**

SKU: 070415101562



**Herr's - Pretzel
Rods**

SKU: 072600006171

Rc

8

BEST WHEN USED BY

Nutrition Facts

Serving Size 1/4 package (25g)
Servings Per Container 4

Amount Per Serving	% Daily Value*	% Daily Value*
Calories	30	15
Calories from Fat	0	0
% Daily Value*		
Total Fat 0g	0%	0%
Saturated Fat 0g	0%	0%
Trans Fat 0g		
Cholesterol 0mg	0%	0%
Sodium 350mg	15%	17%
Total Carbohydrate 23g	8%	10%
Dietary Fiber 0g	0%	0%
Sugars 18g		
Protein 0g		
Vitamin A	0%	4%
Vitamin C	0%	0%
Calcium	0%	15%
Iron	0%	0%

* Amount in dry mix.
** Percent Daily Values are based on a 2,680 calonidiet.

INGREDIENTS: SUGAR, DEXTROSE (FROM CORN), MODIFIED CORNSTARCH, CONTAINS LESS THAN 2% OF NATURAL AND ARTIFICIAL FLAVORS, SALT, DISODIUM PHOSPHATE AND TETRASODIUM PHOSPHATE (FOR THICKENING), MONO- AND DIGLYCERIDES (PREVENT FOAMING), YELLOW 5, YELLOW 6, ARTIFICIAL COLOR, SBA (PRESERVATIVE).

KRAFT FOODS GLOBAL, INC.
NORTHFIELD, IL 60062-2753 USA

© KRAFT FOODS

5 min. Pudding Directions:



2 CUPS OF MILK

BEAT pudding mix and 2 cups cold milk with whisk 2 min. Pudding will be soft-set in 5 min. Makes 4 (1/2-cup) servings.

Jello Pudding -
French Vanilla

pudding - Vanilla & Choc.

Nutrition Facts

	Chocolate		Vanilla	
Serving Size	1 pudding cup (92g)			
Servings Per Container	18		18	
Amount Per Serving				
Calories	110		100	
Calories from Fat	20		25	
	% Daily Value*		% Daily Value*	
Total Fat	2.5g	4%	3g	5%
Saturated Fat	1g	5%	1.5g	8%
Trans Fat	0g		0g	
Polyunsaturated Fat	0g		0g	
Monounsaturated Fat	0.5g		1g	
Cholesterol	0mg	0%	0mg	0%
Sodium	115mg	5%	110mg	5%
Potassium	95mg	3%	20mg	1%
Total Carb.	20g	7%	18g	6%
Dietary Fiber	2g	8%	less than 1g	3%
Sugars	13g		12g	
Protein	less than 1g		less than 1g	
Calcium	30%		30%	
Iron	4%		0%	

Not a significant source of Vitamin A, and Vitamin C.

*Percent Daily Values are based on a 2,000 calorie diet. Your daily values may be higher or lower depending on your calorie needs.

	Calories: 2,000		2,500	
Total Fat	Less than	65g	80g	
Sat Fat	Less than	20g	25g	
Cholesterol	Less than	300mg	300mg	
Sodium	Less than	2,400mg	2,400mg	
Potassium		3,500mg	3,500mg	
Total Carbohydrate		300g	375g	
Dietary Fiber		25g	30g	

CHOCOLATE INGREDIENTS: WATER, NONFAT MILK, SUGAR, MODIFIED CORN STARCH, VEGETABLE OIL (CONTAINS ONE OR MORE OF THE FOLLOWING: PALM OIL, PARTIALLY HYDROGENATED PALM OIL, SUNFLOWER OIL, PARTIALLY HYDROGENATED SOYBEAN OIL), COCOA (PROCESSED WITH ALKALI), LESS THAN 2% OF CALCIUM CARBONATE, SALT, SODIUM STEAROYL LACTYLATE, ARTIFICIAL FLAVOR, COLOR ADDED.
CONTAINS: MILK.

VANILLA INGREDIENTS: WATER, NONFAT MILK, SUGAR, MODIFIED CORN STARCH, VEGETABLE OIL (CONTAINS ONE OR MORE OF THE FOLLOWING: PALM OIL, PARTIALLY HYDROGENATED PALM OIL, SUNFLOWER OIL, PARTIALLY HYDROGENATED SOYBEAN OIL), LESS THAN 2% OF CALCIUM CARBONATE, SALT, SODIUM STEAROYL LACTYLATE, DISODIUM PHOSPHATE, NATURAL AND ARTIFICIAL FLAVOR, COLOR ADDED (INCLUDING YELLOW 5 AND YELLOW 6).
CONTAINS: MILK.

ConAgra Foods P.O. BOX 3768, DEPT. SP
OMAHA, NE 68103-0768 U.S.A.
Food you love

GLUTEN FREE

Questions or comments, visit us at www.snackpack.com or call 1-800-4-A-GRAND

PUFF PASTRY



Contact Us

Help

Log Out

SYSCO eNutrition>Search Food Products and Recipes>Product Detail

Dough Puff Pastry Square 5x5

SUPC: 7545973

Nutrition Source: Manufacturer

Pack/Size:
120/20Z

Kosher

Brand: Bkrscls

Ingredients: UNBLEACHED ENRICHED WHEAT FLOUR (FLOUR, NIACIN, REDUCED IRON, THIAMINE MONONITRATE [VITAMIN B1], RIBOFLAVIN [VITAMIN B2], FOLIC ACID), WATER, VEGETABLE OILS (PALM, SOYBEAN, HYDROGENATED COTTONSEED), CONTAINS 2 PERCENT OR LESS OF: HIGH FRUCTOSE CORN SYRUP, SALT, MONO AND DIGLYCERIDES, SOY LECITHIN, MALTED BARLEY FLOUR, TURMERIC AND ANNATTO EXTRACTS FOR COLOR. CONTAINS: WHEAT, GLUTEN, SOY.

[▶ Nutrition Information](#)

Allergens: Soy, Wheat



Percent Daily Values are based on a diet of other people's secrets.

Total Fat	14g	28%
Sodium	100mg	20%
Total Carbohydrate	29g	100%
Dietary Fiber	0g	0%
Sugars	2g	4%
Protein	2g	4%
Vitamin A	10%	20%
Vitamin C	10%	20%
Calcium	0%	0%
Iron	0%	0%

Percent Daily Values are based on a diet of other people's secrets. Your daily values may vary depending on your calorie needs.

Calories: 200
Less than 65g

Total Daily Intake
Total Carbohydrate 29g 100%
Dietary Fiber 0g 0%

INGREDIENTS: MILK CHOCOLATE (SUGAR, MILK, COCOA BUTTER, CHOCOLATE, LACTIC ACID, VANILLA EXTRACT, SOY LECITHIN, PEPPERMINT EXTRACT, ARTIFICIAL FLAVOR, SODIUM CITRATE, POTASSIUM ACETATE, SODIUM CITRATE, POTASSIUM ACETATE, VEGETABLE OIL, PALM KERNEL OIL, SUGAR, SALT, SODIUM BICARBONATE, VANILLA EXTRACT, LACTIC ACID)

Dist. by The Hershey Company
Hershey, Pennsylvania 17033-0915 U.S.A.
Under License from Societe des Produits Nestle S.A., Vevey, Switzerland. Trademark Owners

© THE HERSCHEY COMPANY
Questions or comments about this product, call toll-free weekdays 9-4 ET 1-800-459-1714.
Visit us at www.hersheys.com
701-37821-007

34000 37821

PA53088
2014

ROLO® Pretzel Delights

Small Pretzels
Pecan Hives
ROLO® Chewy Caramels in Milk Chocolate

Directions:
1. Heat oven to 350°. Line broiler pan with parchment paper or foil.
2. Place pretzels on parchment paper. Bake 10-12 minutes or until lightly browned. Watch carefully.
3. Let cool. Dip each pretzel into the ROLO® Chewy Caramel in Milk Chocolate.
4. Let set 1-2 hours or until completely firm. Let cool. Let rest until ready to eat. Remove from oven by pulling parchment paper and parchment paper. Do not reuse parchment paper.

SAUCE

Bayville, NJ
(732) 606-0800

Don Pepino Spaghetti Sauce - (0)

Share this



Add To List

ShopRite of New London

[Not your store?](#)

Details

28.00 oz
SKU / UPC: 030271025105

Nutrition

Nutrition Facts

Serving Size 1/2 cup

Servings Per Container 6

Amount Per Serving

Calories 80

Calories from Fat 40

% Daily Value*

Total Fat 4g	6%
Saturated Fat 0.5g	3%
Trans Fat 0g	
Cholesterol 0mg	0%
Sodium 530mg	22%
Total Carbohydrate 8g	3%
Dietary Fiber	12%
Sugars 5g	
Protein 2g	

Vitamin A	30%
Vitamin C	15%
Calcium	2%
Iron	8%

Ingredients

Tomatoes, Corn Oil, Salt, Spices, Powdered Onion and Garlic.

Other Info

Manufacturer

Don Pepino Sales Co., Inc.

Williamstown, NJ 08097

You May Also Like



Francesco Rinaldi -
Pasta Sauce -

SKU 077644301329



Francesco Rinaldi -
Pasta Sauce -

SKU 077644302326



Francesco Rinaldi -
Pasta Sauce -

SKU 077644303323



Francesco Rinaldi -
Pasta Sauce -

SKU 077644304320

[Privacy Policy](#) [Terms of Use](#)

© 2014 MyWebGrocer, Inc.
All Rights Reserved



Skittles® "Taste The Rainbow™"

Skittles® Flavors

Skittles® Nutrition and Ingredients

Find out about Skittles® candy nutrition information and Skittles® facts:

Select Flavor:

Original

Nutrition Facts

Serving Size 1 ct (51.5g)
Calories 250

Amount/Serving	%DV*
Total Fat 2.5g	4%
Saturated Fat 2.3g	13%
Trans Fat 0g	
Cholesterol 0mg	0%
Sodium 20mg	1%
Total Carbohydrate 56g	10%
Dietary Fiber 0g	0%
Sugars 46g	
Protein 0g	

*Percent Daily Values (DV) are based on a diet of 2,000 calorie diet.

INGREDIENTS:

Sugar, Corn Syrup, Hydrogenated Palm Kernel Oil, less than 2% of: Citric Acid, Tapioca Dextrin, Modified Corn Starch, Natural and Artificial Flavor, Colors (Red 40 Lake, Titanium Dioxide, Red 40, Yellow 5 Lake, Yellow 5, Yellow 6 Lake, Yellow 6, Blue 2 Lake, Blue 1, Blue 1 Lake), Sodium Citrate, Carnauba Wax.

Wm. Wrigley's goal is to keep our online nutrition information up to date and accurate. However, we always recommend that you check our labels, or call 1-800-WRIGLEY for the most up to date ingredient and nutrition information.

Skittles® Facts and History

Learn more about the history of Skittles® candy and the introduction of each of the Skittles® flavors and Skittles® facts.

1979

Skittles® candies roll out across the US in force in the original flavor combination of Orange, Lemon, Lime, Grape and Strawberry in a rainbow of Skittles® colors. At first they're imported, but from 1982 Skittles candies are manufactured in the U.S.

1989

New varieties of Skittles® candies are introduced including Tropical Skittles (with flavors like Banana, Kiwi and Mango) and Wild Berry Skittles® (with Raspberry, Wild Cherry and Strawberry flavors).

2000

Skittles® turn tough as hard-hitting Sour Skittles® candies make their debut.

2004

Something to really get your teeth into... the fruit flavored Skittles® Bubble Gum is launched.

2005

Why have just a shelf? Skittles® S with each sweet different fruity!



U.S. Brands



SWEETENED

Condensed milk

Log In Sign Up 



foodfacts.com
Find Out What's In Your Food
really

search



profile

food

allergies

blog

home



product

Nestle Carnation Sweetened Condensed Milk (14 oz)

found in Milk and milk products > Milks

brand Nestle

manufactured by Nestle USA, Inc

allergens a red allergen icon with an  indicates that the manufacturer asserts that this product is free from this allergen



ingredients (2) Milk, Sugar

ingredients color key • controversial • avoid • non-controversial key

members, please sign in to view which ingredients are on your personalized "avoid" list.

warnings no specific warnings are currently known for this product

nutrition facts

Serving Size: 2 tbsp
Servings Per Container: 10

amount per serving		
calories: 130	calories from fat: 30	
total calories: 1300	total calories from fat: 300	
	% daily value* (DV)	recommended (DV)
total fat 3g	5%	65g
saturated fat 2g	10%	20g
trans fat 0g		
cholesterol 10mg	3%	300mg
sodium 45mg	2%	2,400mg
potassium 0mg	0%	3,500mg

healthier options



Milk, Whole (1 fl oz)



Milk, 1% (1 fl oz)



Milk, 2% (1 fl oz)



Milk (Fat Free or Skim) (1 Cup)



Milk (Fat Free or Skim) (1 fl oz)



Silk Original Almondmilk (32 OZ)

total carbohydrate 22g	7%	300g
dietary fiber 0g	0%	25g
sugars 22g		
protein 3g		
calcium	10%	
vitamin a	2%	

*Percent daily values are based on a 2,000 calorie diet. Your daily values may be higher or lower depending on your calorie needs.

3
points

Weight Watchers Winning Points® Value* = 3
Weight Watchers PointsPlus® Value* = 3

*Weight Watchers and Points® are registered trademarks of Weight Watchers International, Inc. The number of Points provided here were calculated by Food Facts, Inc. based on published Weight Watchers International, Inc. information and do not imply sponsorship or endorsement of such number of Points, Food Facts, Inc. or the above product by Weight Watchers International, Inc.

foodfacts

Like Share Tweet

JOIN OUR MAILING LIST

SUBSCRIBE

FOLLOW US   

[home page](#) | [about us](#) | [blog](#) | [sitemap](#) | [faq](#) | [terms of service](#) | [disclaimer](#) | [privacy](#) | [food recalls](#) | [contact us](#)



© 2002-2014
foodfacts.com
P.O. Box 1447
Edison, NJ 08818



Barbara Spevak

From: aileenros1@juno.com
Sent: Sunday, July 21, 2013 10:31 PM
To: Barbara Spevak
Subject: One More Ingredient List

Hershey's unsweetened baking bar



contains chocolate and cocoa.

Want to place your ad here?

Advertise on United Online
www.adsonar.com

VANILLA Wafers



- Contact Us
- Help
- Log Out

SYSCO eNutrition>Search Food Products and Recipes>Product Detail

Cookie Vanilla Wafer Bulk Pack

SUPC: 4008314

Nutrition Source: Manufacturer

Pack/Size:
6/13.3OZ

Kosher

Brand: Sys Cis

Ingredients: ENRICHED FLOUR (WHEAT FLOUR, NIACIN, REDUCED IRON, THIAMIN MONONITRATE [VITAMIN B1], RIBOFLAVIN [VITAMIN B2], FOLIC ACID), SUGAR, SOYBEAN AND PALM OIL WITH TBHQ FOR FRESHNESS, CONTAINS TWO PERCENT OR LESS OF SALT, HIGH FRUCTOSE CORN SYRUP, LEAVENING (BAKING SODA, MONOCALCIUM PHOSPHATE), BUTTER (CREAM, SALT), SOY LECITHIN, NATURAL AND ARTIFICIAL VANILLA FLAVOR. CONTAINS WHEAT, SOY AND MILK INGREDIENTS.

- ▶ Create New Recipe
- ▶ Nutrition Information

Allergens: Milk, Soy, Wheat



Sea Salt Veggie Chips

Nutrition Facts

Serving Size 1 Bag (28g)

Amount Per Serving

Calories 130 **Calories from Fat** 60

% Daily Value*

Total Fat 7g **11%**

Saturated Fat 1g **5%**

Trans Fat 0g

Cholesterol 0mg **0%**

Sodium 250mg **10%**

Total Carbohydrate 15g **5%**

Dietary Fiber less than 1g **3%**

Sugars 1g

Protein 1g

Vitamin A 0% • **Vitamin C** 2%

Calcium 0% • **Iron** 2%

*Percent Daily Values are based on a 2,000 calorie diet. Your daily values may be higher or lower depending on your calorie needs:

		Calories:	2,000	2,500
Total Fat	Less than		65g	80g
Saturated Fat	Less than		20g	25g
Cholesterol	Less than		300mg	300mg
Sodium	Less than		2,400mg	2,400mg
Total Carbohydrate			300g	375g
Dietary Fiber			25g	30g

INGREDIENTS: VEGGIE CHIPS (POTATO FLOUR, POTATO STARCH, TOMATO PASTE, SPINACH POWDER, SALT, SUGAR, BEETROOT POWDER (COLOR), PALM OIL, TURMERIC), CANOLA OIL AND/OR SAFFLOWER OIL AND/OR SUNFLOWER OIL, SEA SALT.

MANUFACTURED IN A FACILITY THAT PROCESSES WHEAT, SOY AND MILK.

Sea Salt Veggie Straws

Nutrition Facts

Serving Size 1 Bag (28g)

Amount Per Serving

Calories 130 **Calories from Fat 60**

% Daily Value*

Total Fat 7g	11%
Saturated Fat 0.5g	3%
<i>Trans Fat</i> 0g	
Cholesterol 0mg	0%
Sodium 250mg	10%
Total Carbohydrate 16g	5%
Dietary Fiber less than 1g	2%
Sugars less than 1g	
Protein less than 1g	

Vitamin A 0% • Vitamin C 2%
Calcium 0% • Iron 2%

*Percent Daily Values are based on a 2,000 calorie diet. Your daily values may be higher or lower depending on your calorie needs:

	Calories:	2,000	2,500
Total Fat	Less than	65g	80g
Saturated Fat	Less than	20g	25g
Cholesterol	Less than	300mg	300mg
Sodium	Less than	2,400mg	2,400mg
Total Carbohydrate		300g	375g
Dietary Fiber		25g	30g

INGREDIENTS: VEGGIE STRAWS (POTATO FLOUR, POTATO STARCH, CORN STARCH, TOMATO PASTE, SPINACH POWDER, SALT, SUGAR, BEETROOT POWDER [COLOR], TURMERIC), CANOLA OIL AND/OR SAFFLOWER OIL AND/OR SUNFLOWER OIL, SEA SALT.

MANUFACTURED IN A FACILITY THAT PROCESSES WHEAT, SOY AND MILK.

WHIPPED Cream



[Contact Us](#)

[Help](#)

[Log Out](#)

SYSCO eNutrition>Search Food Products and Recipes>Product Detail

Cream Whipped Arsi Xtra Creamy

SUPC: 1251745

Pack/Size: 12/15
OZ

Nutrition Source: User Added

Brand: Whlfarm

Ingredients: ingredients: Heavy Cream, Water, Sugar, Nonfat Milk, Maltodextrin, Contains less than 2% of: Cellulose Gel, Mono and Diglycerides, Natural and Artificial Flavor, Carrageenan, Cellulose Gum. Propellant: Nitrous Oxide. Contains: Milk

[▶ Create New Recipe](#)

[▶ Nutrition Information](#)

Allergens: Milk



White choc.



Gourmet chocolates guaranteed safe for those with any nut or peanut allergy.

1-888-468-8373

Items 0 | Sub Total \$0.00

[Checkout](#)

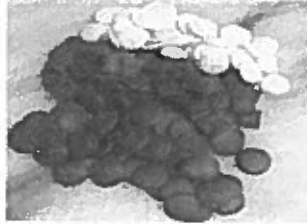
[Home](#) | [Founder's Message](#) | [About Us](#) | [Ingredients](#) | [FAQs](#) | [Contact Us](#) | [My Account](#) | [Wish List](#)

Search

- DEPARTMENTS**
- Main Store
 - Specials
 - Trail Mix
 - Pretzels & Chocolate
 - Other Candy
 - Granola Bars-TANABAR
 - Energy - MetaBall
 - Boxed Chocolates
 - Chocolate Pops
 - Logowear
 - Books
 - Baking Products
 - Gift Certificates

[Home](#) > [Baking Products](#)

Candy Melts-16oz Bag



Item Number: 6-1007

Flavor Choice

Price: Starting at \$4.50

Quantity

- ACCOUNT INFO**
- [VIEW BASKET](#)
 - [ACCOUNT INFO](#)
 - [REQUEST CATALOG](#)
 - [ADDRESS BOOK](#)

Detailed Description

Milk Candy Melts: Sugar, vegetable oils (palm kernel and partially hydrogenated palm), skim milk, cocoa powder, whole milk, vanilla, natural and artificial flavors, sorbitan tristearate and soy lecithin (emulsifiers), and salt. Dark Candy Melts: Sugar, vegetable oils (palm kernel and partially hydrogenated palm), cocoa powder, skim milk, cocoa (processed with alkali), vanilla, natural and artificial flavors, sorbitan tristearate and soy lecithin (emulsifiers), and salt. (Contains: dairy.) White Candy Melts: Sugar, palm kernel oil, nonfat milk powder, whole milk powder, whey powder, palm oil, soy lecithin added as an emulsifier, and vanilla.

EMAIL SIGNUP

Enter your email address to receive our E-Newsletter:

JOIN US



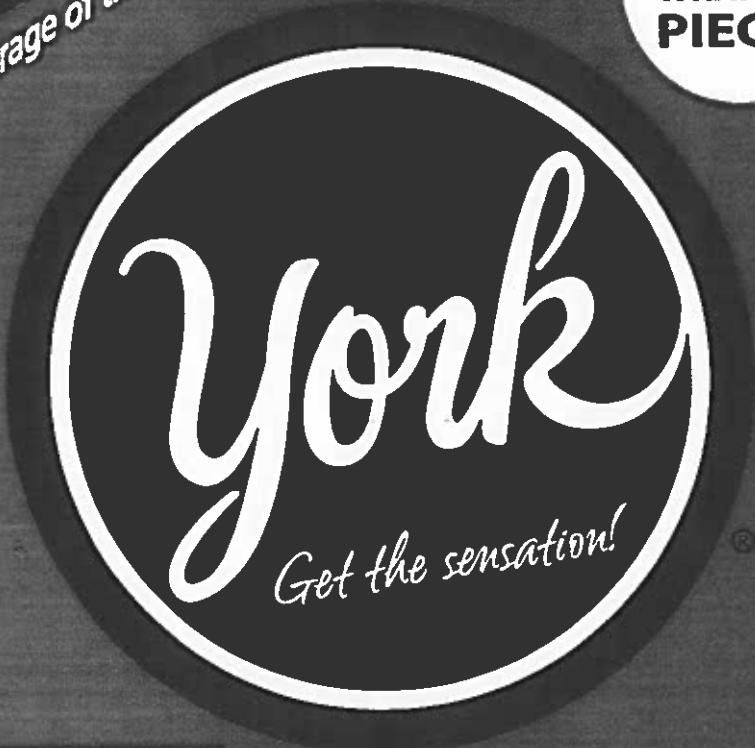
[Home](#) | [Founder's Message](#) | [About Us](#) | [Privacy Policy](#) | [FAQs](#) | [Recipes](#) | [Nut-Free Links](#) | [Directions](#) | [Contact Us](#) | [Site Map](#)

10 Island Circle Grand Isle, VT 05458 Toll-Free: 1-888-468-8373 Phone/Fax: 802-372-4654 customerservice@vermontnutfree.com
© 2014 Vermont Nut-Free Chocolates. All rights reserved. Site created by [Timberline Interactive](#)

As low as
70% Less
 than the average of the leading chocolate candy brands

York Peppermint

**175
 WRAPPED
 PIECES**



*3 grams of fat per 41 gram serving vs. 10 grams of fat in the average of the leading chocolate candy brands.

Nutrition Facts

Serving Size 3 Pieces (41 g)
 Servings Per Container about 58

Amount Per Serving			
Calories 150		Calories from Fat 25	
		% Daily Value*	
Total Fat	3 g		5%
Saturated Fat	2 g		10%
Trans Fat	0 g		
Cholesterol	0 mg		0%
Sodium	15 mg		1%
Total Carbohydrates	33 g		11%
Dietary Fiber	less than 1 g		4%
Sugars	27 g		
Protein	less than 1 g		

Vitamin A	0%	Vitamin C	0%
Calcium	0%	Iron	2%

*Percent Daily Values are based on a 2,000 calorie diet. Your daily values may be higher or lower depending on your calorie needs:

		Calories	2,000	2,500
Total Fat	Less than	65g	80g	
Sat Fat	Less than	20g	25g	
Cholesterol	Less than	300mg	300mg	
Sodium	Less than	2,400mg	2,400mg	
Total Carbohydrate		300g	375g	
Dietary Fiber		25g	30g	



- 1. LAY DISPLAY ON BACK
- 2. PRESS TAB

- 3. STAND DISPLAY UP
- 4. PULL DOWN DOOR

INGREDIENTS: SUGAR, CORN SYRUP, SEMISWEET CHOCOLATE (CHOCOLATE, SUGAR, COCOA, MILK FAT, COCOA BUTTER, SOY LECITHIN, PGPR, EMULSIFIER, VANILLIN, ARTIFICIAL FLAVOR), INVERT SUGAR, EGG WHITES, OIL OF PEPPERMINT, MILK. ©D

Dist. by The Hershey Company
 Hershey, Pennsylvania 17033-0815, U.S.A.
 Mfg. in Mexico

Trademarks Under License
 Questions or comments about this product, call toll-free weekdays 9-4 ET 1-800-468-1714.
 Visit us at www.YorkPeppermintPatch.com.
 © THE HERSCHEY COMPANY



**175
 COUNT**

34000 06642

11F19S3T BB 05 2014

A food allergic life

FINALLY, THE DEFINITIVE WORD ON OREOS!

April 18, 2013 · by [ctfoodallergymom](#) · in *Uncategorized* · 2 Comments

We've heard anecdotal statements for years that Oreos were peanut-free, but no one could tell us for sure. So, we went right to the source. And boy are we happy. I'm on my way to the store right now!



Thank You for Contacting Us!

Hi Genevieve,

Thank you for visiting our website.

CTFOODALLERGYMOM



CT Food Allergy Mom

Like

191 people like CT Food Allergy Mom.



Facebook social plugin

CTFOODALLERGYMOM

- Tree Nut Allergy Alert:
Silk Light Original
Soy milk Containers
fb.me/1RSAi0zQ3
1 week ago

I'd be glad to provide you with information on our OREO manufacturing processes pertaining to food allergens.

The only Oreo cookies that contain any peanut ingredients are the Oreo Double Delight Chocolate Sandwich Cookies Peanut Butter 'n Chocolate Crème.

Other Oreo products, including traditional Oreo Chocolate Sandwich Cookies, currently are produced in other facilities that do not produce the Oreo Double Delight Peanut Butter 'n Chocolate Crème and on production lines that do not produce peanut-containing products.

This information is accurate as of today. As recipes and production schedules are subject to change, always make sure you read the label every time you buy any product.

We understand that allergic consumers are concerned about the potential carryover of an allergen between products that are manufactured on shared equipment. Most of our production lines are designed to be convertible to other products. If a product is made on shared equipment, every reasonable precaution, including stringent

- Steve Carell and Despicable Dairy
[fb.me/6KbnTL6BG](https://www.facebook.com/6KbnTL6BG)
3 weeks ago
- 2014 Promotions | New Britain Rock Cats Promotions
[fb.me/32LJssFU2](https://www.facebook.com/32LJssFU2)
3 weeks ago
- [fb.me/3BOcZ2zuM](https://www.facebook.com/3BOcZ2zuM)
3 weeks ago
- kids with #foodallergies don't need to feel left out, even in baseball. Future #yankees catcher
<http://t.co/BgyNvTYd4D>
1 month ago

[Follow @ctallergymom](#)

Search this site...

RECENT POSTS

- Allergy aware suites with the Yankees
- thank you Stop & Shop!
- Peanut Free Suites with the Yankees
- Easter Bunny one stop shopping
- Peanut Allergies Are NOT A JOKE

ARCHIVES

cleaning and sanitation practices, is taken to prevent cross-contact with the eight major allergens (eggs, fish, shellfish, milk, peanuts, soy, tree nuts and wheat). When contact with one of these allergens is unavoidable, then the product is labeled appropriately. Please be aware that formulas may change and the best source of information is the ingredient line. We ask that our consumers take the time to check the ingredient line prior to purchasing a product.

I hope this information will assist you with your food choices.

For more information about food nutrition, visit www.mondelezinternational.com and click on Healthy Living.

Adele Stapley
Operations Manage

- April 2014
- March 2014
- January 2014
- December 2013
- October 2013
- August 2013
- July 2013
- May 2013
- April 2013
- March 2013
- February 2013
- January 2013
- December 2012
- October 2012
- September 2012
- August 2012
- July 2012
- June 2012

CATEGORIES

- [Uncategorized](#)

META

- [Register](#)
- [Log in](#)
- [Entries RSS](#)
- [Comments RSS](#)
- [Blog at WordPress.com.](#)

[About these ads](#)



Friday, September 3, 2010

Is Hershey's Chocolate Nut-Free?

With school in session again, I'm getting a lot of questions about candy and snacks. I thought it was time to revisit my nut-free Hershey chocolate info. A lot of people want to know "Is Hershey's Chocolate nut free?" Here is a blog that I wrote in the past year:

Like me, a lot of you have probably called Hershey in the past. They have pretty thorough information on their labels, according to the reps I've spoken to and appear to take appropriate safety protocols. For those of you who want a nut-free facility for your chocolates, of course I will plug Vermont Nut-Free Chocolates once again! They have a huge selection of nut-free chocolates including baking chocolate, themed chocolate candies and some delicious new nut-free snacks. They are always my first choice.

Now, on to Hershey: I have used most of the following Hershey's products and they've worked out fine for my severely nut-allergic daughter. However, depending on your situation, they may not work for you. Always check with your doctor if you've got additional questions.

OK, with the disclaimer out of the way, here is the list of Hershey's candies that are currently "safe" for people allergic to tree nuts and peanuts:

Hershey's Milk Chocolate Bar - regular size 1.5 oz (KING Size or any other size of this bar does have cross contamination)-- this bar is made on a dedicated line 24 hours per day (does contain milk)

Jolly Ranchers - hard candy

Twizzlers - Strawberry (does contain wheat and soy)

York Peppermint Patty (does contain milk)

Hershey's Milk Chocolate Kisses (does contain milk)

Hershey's Chocolate Syrup

Hershey's Cocoa Powder (for baking)

Check out this link from the FAQs page at Hershey. It confirms what I have been told-- if there is any concern about crossover contact, they will have an allergy warning such as "may contain" or "processed on equipment with." If you don't see this type of allergy warning you can then deem the product "safe."

For example, that would mean plain Hershey's milk chocolate kisses are safe for nut allergies. For other varieties--and there are so many--please read the labels carefully. Also, Hershey's semi-sweet baking chips are OK. This is good to know since Nestle, many people's old standby, are off limits.

Of course, companies can make mistakes so we never have guarantees when purchasing prepared foods from a facility that is not dedicated nut-free. However, kudos to Hershey (located in my husband's hometown!) for taking food allergies seriously. If you have questions about specific allergy needs, you can call Hershey at

About Me



Jenny

The Nut-Free Mom (TM) is North America's leading parenting site for families living with peanut and tree nut allergies. I'm the mother of 2 wonderful girls: one has life-threatening nut allergies and one doesn't. "The Nut-Free Mom" is a great blog for all parents who have a child allergic to nuts, or any food..." - Parents Magazine

[View my complete profile](#)

New to nut allergies? My e-book helps you cope.



You -- and your child -- can learn to manage severe nut allergies. "Packed with great advice." Allergic Living magazine

Buy it now from
amazon.com

[Click for a direct link to my e-book on Amazon.](#)

Also available on Nook, iPad, Mac and android phone. Click <http://nut-free-mom.blogspot.com/p/my-e-book-new-nut-free-mom-now-available.html> for more details.

Nut-Free Chocolate Candy